

V. SUMMARY AND CONCLUSIONS

SUMMARY

In the course of the archaeological investigation for the Lee-Fendall House Garden in Alexandria, intact deposits and features dating to the late eighteenth to mid-nineteenth centuries were discovered underneath the modern garden surface. They include a buried ground surface associated with the Fendall and Lee families' occupation of the property from 1785 to 1843 as well as a series of three postholes that appear to be related to one of several outbuildings recorded on a Declaration of Assurance made by Philip Richard Fendall in 1796. An additional intact buried surface was identified atop the Fendall-Lee ground surface. This second buried surface is associated with the Cazenove family occupation of the Lee-Fendall House and dates to 1850 to 1870. During that period Louis Cazenove constructed a pleasure garden to compliment his newly redesigned Greek Revival house, and several elements from his pleasure garden were discovered during the archaeological investigation. The most important of these is the remains of a curvilinear walkway that stretched around the perimeter of Cazenove's garden. Another feature is a possible mid-nineteenth-century planting bed that bordered the walkway along the north-central portion of the garden. Lastly, the foundation of a garden tool shed or storage building was identified in the southeast corner of the garden. The building appears to be the same one that was repurposed as a "deadhouse" when the Lee-Fendall House was used as a hospital by the Union Army from 1863 to 1865.

LOUIS CAZENOVE'S PLEASURE GARDEN

When Louis Cazenove purchased the Lee-Fendall House in 1850, he quickly began rebuilding and renovating the property. Cazenove remodeled the house in the Greek Revival style, removed the old pitched roof and attic space, and replaced it with a hip roof to create a full third story. He also installed diamond-paned windows on the third story and lengthened the first-story windows. The exterior of the structure was restored with new wood siding, and several other decorative changes were made to both the interior and exterior. To complement and enhance his redesigned house, Cazenove would have also extended the renovation to include the construction of a contemporary pleasure garden on the grounds.

For years the VTHP has attempted to ascertain how Cazenove organized his garden. A thorough investigation of Cazenove family papers and other historical documents related to the Lee-Fendall House failed to produce any insight into the nineteenth-century garden's design. Lacking such historical accounts, contemporary gardening manuals were consulted and were extremely helpful in interpreting the results from the archaeological investigation. The two main schools in garden design during the mid-nineteenth century were "the Beautiful" and "the Picturesque." The exclusive use of one over the other, or the harmonious combination of the two, could inform every aspect of garden design from the placement of walks and outbuildings down to the variety and location of the garden's trees and plants.

Even with the limited amount of space available to him, Cazenove appears to have implemented elements of the Beautiful in his garden design. Downing (1845) suggests that homes in the

classical style are better suited to have adjoining gardens follow the principles of the Beautiful. Cazenove's renovated Greek Revival house would have certainly fallen into this category. One major element of the Beautiful found during the investigation at the Lee-Fendall House Garden was the curvilinear garden walk. The walk was well built, with a gravel surface and a thick brick and mortar rubble foundation. According to Kemp (1850a), walks built in such a manner remain firm and dry through any season. This feature is an essential element of the Beautiful design. The walk at the Lee-Fendall House Garden also reflects the Beautiful in that its path consists of easy flowing curves and lines as it extends around the perimeter of the garden.

Whether Cazenove employed elements of the Picturesque is uncertain. No such elements were identified archaeologically. It is possible that Cazenove implemented elements of the Picturesque when selecting and arranging trees, plants, and shrubs within his design, displaying interesting varieties and arrangements of plants and trees while retaining overall simplicity. As no archaeological evidence was found, the possibility of Cazenove's use of the Picturesque in his garden design is purely conjecture.

Aside from determining which principles of design to use, Louis Cazenove likely had other challenges to address when planning and implementing his small garden. Edward Kemp's book, *How to Lay Out a Small Garden*, was not published until 1850, but many of the practical considerations and directions his book provides were evidently applied by Cazenove during the creation of his garden.

One practical consideration provided in the text included the proper grade of the garden. Kemp (1850a) argues that a proper small garden should include an open, flat or slightly sloping grass lawn stretching from the best windows of the house to within a short distance of the property boundary. Louis Cazenove's garden consisted of an artificially level surface with an open yard, or bowling green, extending from the windows of the dining room to within 8 feet of the property line. This was represented archaeologically by a deposit of fill found across the entire garden. The fill sits on top an uneven late eighteenth- to early nineteenth-century yard surface and contains numerous features associated with the circa 1850 garden, including the garden walkway and outbuilding. No structural features or planting beds were found in the center of the garden during the investigation, suggesting that this area was open and likely covered by a manicured lawn.

Another practical consideration described by Kemp involves the treatment of garden walks. As discussed earlier, Kemp argues that a proper walk should be constructed by cutting curvilinear trenches 12 to 18 inches deep, filled with rubble and topped by 3 inches of gravel. This way the walk will remain firm over the years and facilitate proper drainage of water after heavy rains. The walks discovered during the Lee-Fendall excavation reflect this design. A curvilinear walkway was discovered around the north, east, and south perimeters of Cazenove garden's bowling green. The walks were constructed with brick and mortar rubble foundations 3 to 5 feet wide, measuring approximately 1 foot thick and covered by a layer of fine-grain gravel.

Planting beds were commonly placed along the perimeter of walks, and Kemp maintained that beds are appropriate additions along the edge of the property. Since Louis Cazenove chose to have an open yard at the center of his garden, the only possible location for his planting beds was

between the walks and property line. That design closely parallels that of the present garden at the Lee-Fendall House, with the majority of the plantings located at the property's edge. Only one possible planting bed was discovered archaeologically. It was located between the north walk and the Lee-Fendall House. Since the bed is positioned between the house and the lawn, the plantings would have been low-lying varieties that would not obscure the view of the landscape. Archaeological traces of the perimeter beds have been obscured by repeated redigging in the active planting beds that cover these areas.

In addition to planting beds, Kemp recommended fences or walls at the perimeter of gardens to provide some privacy and "retirement" for the property's owners. Kemp suggested the use of small, well-made fences over high brick walls or tree belts. Such a suggestion would have been difficult for Louis Cazenove to implement. When Cazenove purchased the property in 1850, a long, high brick wall ran along the east boundary of the garden. This same wall still stands today. The presence of such walls often serves to make a small garden appear even more diminutive. In order to counteract this, Kemp suggested that ivy or shrubs be placed irregularly along the wall in order to reduce the hardness of the wall's lines.

The same principles of camouflage could also be used to hide a garden outbuilding. During the investigation one outbuilding associated with the Cazenove period garden was identified. It was located in the southeast corner of the garden, between the circa 1850 walk and the property boundary. The building measured approximately 14 feet square and likely served as a tool shed or other storage building. Its location between the walk and property line suggests that planting beds would be placed around the structure. The plantings may have taken the form of small trees or shrubs to partially obscure the outbuilding.

CONCLUSION

In 1851, with the renovation of the Lee-Fendall House completed, Louis Cazenove became the owner of one of the stateliest modern homes in the City of Alexandria. Cazenove's concern for modernity was expressed in his renovation of the Lee-Fendall House from a rural telescoping house into an urban mansion in the Greek Revival style. Along with the aesthetic enhancements, Cazenove installed several modern comforts that many contemporaries in the mid-nineteenth century could not afford, including a central heating system and shower on the second floor.

Prior to the recent archaeological study, little was known about Cazenove's adjoining half-acre garden. The opulence of his home suggests that the garden may have been equally grand. With the passage of time, however, Cazenove's garden became obscured as later residents modified the landscape to suit their tastes. Documentary accounts from the Cazenove family allude to the presence of a pleasure garden at 614 Oronoco Street, but they lack details regarding the design of the landscape. With all other sources of information exhausted, the VTHP turned to archaeological investigation as a means to reconstruct the lost garden.

Evidence from the 2010 archaeological investigation shows that substantial portions of Louis Cazenove's garden remain intact underneath the modern surface. An even garden surface, composed of locally imported fill, covers the site and contains large quantities of domestic and architectural material dating to the early to mid-nineteenth century. The remains of the garden

walk and outbuildings provide insight as to how Cazenove organized the landscape. The walks encircle an open lawn, which members of the Cazenove family may have used for recreation or entertaining guests, and the ginkgo and black walnut trees provided shade. The lone outbuilding in the southeast corner of the garden possibly served as a storage shed where servants may have kept gardening equipment and other tools. The garden of the 1850s closely resembled the one shown in a photograph from 1895, which depicts a grassy yard and a few trees within a mostly open space encircled by a curving path (see Figure 10).

The archaeology shows that in the 1850s the Lee-Fendall House garden had more or less the same layout it has today (Figure 36). Sometimes archaeology documents great changes in the past, and shows us that our ancestors lived in ways we find strange or even shocking. Sometimes, though, it shows us continuity. Some things endure: designs, habits, notions of beauty. Our idea of how to layout a half-acre garden dates back to the stylish designers and patrons of the early 1800s, who established a pattern that lives on in thousands of modern yards. Just as the Lee-Fendall House preserves a sense of the framework of life in the 1850s, so does the garden.

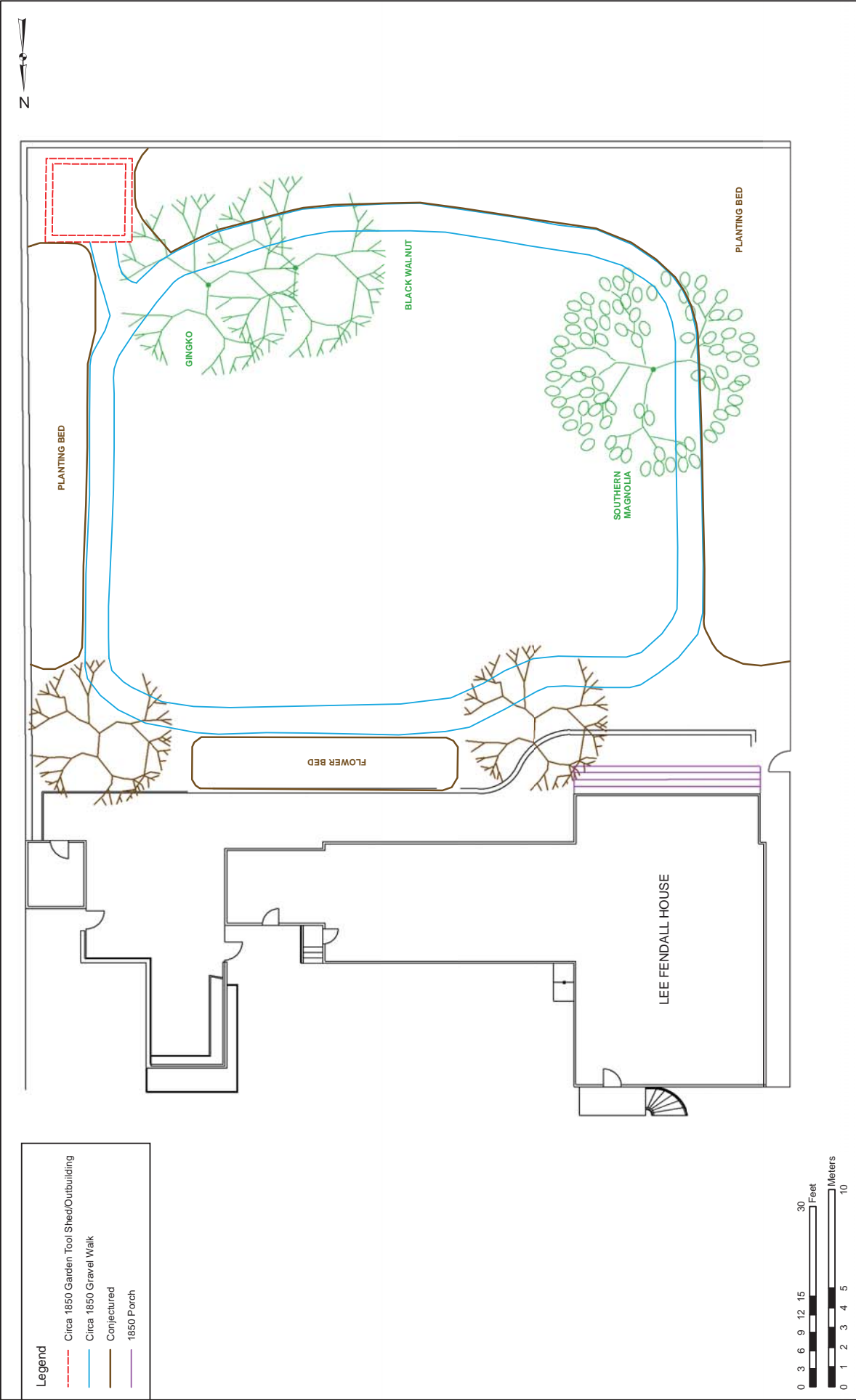


FIGURE 36: Lee-Fendall Garden in 1850

VI. REFERENCES CITED

Adams, John Quincy

- 1841 Washington Tuesday 30 March 1841. Alexandria. In *Diary of John Quincy Adams*, p. 293. On file, Massachusetts Historical Society. Accessed online at http://www.masshist.org/jqadiaries/doc.cfm?id=jqad41_293.

Alexandria Archaeology

- 1890 Photograph of the Lee-Fendall Garden. On file, Alexandria Archaeology, Alexandria, Virginia.
- 1895 Photograph of the Lee-Fendall Garden. On file, Alexandria Archaeology, Alexandria, Virginia.
- 1908a Photograph of the Lee-Fendall Garden. On file, Alexandria Archaeology, Alexandria, Virginia.
- 1908b Photograph of the Lee-Fendall Garden. On file, Alexandria Archaeology, Alexandria, Virginia.
- 1996 *City of Alexandria Archaeological Standards*. Office of Historic Alexandria, Alexandria, Virginia.

Alexandria, City of

- var. Deed Books. On file, Virginia Room, Alexandria City Library, Alexandria, Virginia.
- var. Tax Assessments. On file, Virginia Room, Alexandria City Library, Alexandria, Virginia.

Alexandria Gazette (Alexandria, Virginia)

- 1834 Auction Sale. October 28.
- 1855 For Rent. February.
- 1879 For Rent. September 16.
- 1881 Julia Civalier. August 27.
- 1887 Advertisement. October 6.
- 1896 Lawn Party. May 26.

- Bailey, L.H.
1906 *Cyclopedia of American Horticulture*. Doubleday, Page, & Company, New York.
- Carvalho & Good, PLLC
2010 Lee-Fendall House. Prepared for the Virginia Trust for Historic Preservation by Carvalho & Good, PLLC, Washington, D.C.
- Downing, Andrew Jackson
1841 *Landscape Gardening: A Treatise on the Theory and Practice of Landscape Gardening*. Harvard University Press, Boston.
- 1845 *A Treatise on the Theory and Practice of Gardening Adapted to North America*. Scholarly Publishing Office, University of Michigan Library, Ann Arbor.
- Gilpin, William S.
1835 *Practical Hints Upon Landscape Gardening*. A. Spottiswood, London.
- Hurst, Harold W.
1991 *Alexandria on the Potomac*. University Press of America, Lanham, Maryland.
- Kemp, Edward
1850a *How to Lay Out a Small Garden*. Bradbury and Evans, London.
- 1850b *The Parks and Gardens of London*. Bradbury and Evans, London.
- Loudon, Jane
1840 *Gardening for Ladies*. John Murray, London.
- 1841 *The Ladies Companion to the Flower Garden*. William Smith, London.
- Loudon, John Claudius
1822 *The Encyclopedia of Gardening*. Longman, Brown, Green, and Longmans, London.
- 1826 *The Gardener's Magazine and Register of Rural & Domestic Improvements*. Longman, Brown, Green, and Longmans, London.
- 1839 *The Encyclopedia of Cottage, Farm, Villa Architecture*. Longman, Brown, Green, and Longmans, London.
- Marshall, Roger
2006 *How to Build Your Own Greenhouse*. Versa Press, East Peoria, Illinois.

Miller, T. Michael

- 1986 *Visitors from the Past: A Bi-Centennial Reflection on Life at the Lee-Fendall House, 1785-1985*. Virginia Trust for Historic Preservation, Lee-Fendall House, Alexandria, Virginia.

Mutual Insurance

- 1796 *Mutual Assurance Map of P.R. Fendall's Real Estate*. On file, Virginia Room, Alexandria City Library, Alexandria, Virginia.

Myers, Denys Peter

- 1988 *The Architectural Character of the Lee-Fendall House*. Report on file, Virginia Room, Alexandria Public Library, Alexandria, Virginia.

Myers, Suzita

- 1976 *The Lee-Fendall House: Where Alexandria's Past is Present*. On file, Alexandria Archaeology, Alexandria, Virginia.

Norville, Anna J. and Pamela Cressey

- 1995 *Archaeology at the Lee-Fendall House: Privy Information*. On file, Alexandria Archaeology, Alexandria, Virginia.

Noël Hume, Ivor

- 1970 *A Guide to Artifacts of Colonial America*. Alfred A. Knopf, New York.

Paxton, Joseph

- 1831 *The Horticultural Register*. Bradbury and Evans, London.
- 1834 *Magazine of Botany*. Orr and Smith, London.
- 1840 *Pocket Botanical Dictionary*. Bradbury and Evans, London.
- 1850a *Calendar of Gardening Operations*. Bradbury and Evans, London.
- 1850b *The Flower Garden*. Bradbury and Evans, London.

Paxton, Joseph, Wentworth Dilke, John Lindley, and William Bradbury

- 1841 *Gardener's Chronicle*. Bradbury, Agnew & Co., London.

Repton, Humphrey

- 1806 *An Inquiry into the Changes of Taste in Landscape Gardening*. J. Taylor, London.

Sanborn Map Company

- 1891 *Sanborn Fire Insurance Map of Alexandria, Virginia*. On file, University of Maryland, College Park.

- 1902 *Sanborn Fire Insurance Map of Alexandria, Virginia*. On file, University of Maryland, College Park.
- 1921 *Sanborn Fire Insurance Map of Alexandria, Virginia*. On file, University of Maryland, College Park.
- Shephard, Steven
- 2008 *Summary of Archaeological Investigations at the Lee-Fendall House, 614 Oronoco Street, Alexandria, Virginia*. On file, Lee-Fendall House Museum, Alexandria, Virginia.
- South, Stanley
- 1977 *Method and Theory in Historical Archaeology*. Academic Press, New York.
- U.S. Army, Office of the Quartermaster [U.S. Army]
- 1865 Drawing: Plan Showing Quartermaster Property in Alexandria, Virginia. Record Group 92, Records of the Office of the Quartermaster General, Architectural Records. U.S. National Archives and Records Administration (NARA), Cartographic and Architectural Records, College Park, Maryland.
- United States Bureau of the Census [U.S. Census]
- var. Population Schedules. United States Bureau of the Census. Accessed at the National Archives, Washington, D.C.
- United States [U.S.] Department of the Interior
- 1983 Archaeology and Historic Preservation: Secretary of the Interior's Standards and Guidelines. *Federal Register*, Part IV, 48(2):44716-44742. Accessed 2005. Annotated version showing later technical and officially adopted revisions available from the National Park Service's preservation laws, regulations, and standards webpage at <http://www.cr.nps.gov/local-law/arch_stnds_0.htm>.
- United States Geological Survey [USGS]
- 1965 *Alexandria, Virginia*. 7.5-Minute Topographic Quadrangle. Photorevised 1983, bathymetry added 1982. United States Geological Survey, Reston, Virginia
- Virginia Department of Historic Resources [VDHR]
- 2003 *Guidelines for Archaeological Investigations in Virginia*. Virginia Department of Historic Resources, Richmond.
- Washington, George
- 1785 *Diaries of George Washington*, Vol. IV. September 26, 1785-January 16, 1786, page 20. On file, Library of Congress, Washington, D.C.
- Weber, Carmen
- 1996 The Greenhouse Effect: Gender-Related Traditions in Eighteenth Century Gardening. In *Landscape Archaeology*, edited by Rebecca Yamin and Karen Bescherer Metheny, pp. 32-51. University of Tennessee Press, Knoxville.

APPENDIX A

**METHODS OF ARTIFACT CATALOGING AND ANALYSIS
UTILIZED CODES
ARTIFACT CATALOG**

METHODS OF ARTIFACT CATALOGING AND ANALYSIS

A. LABORATORY PROCESSING

All artifacts were transported from the field to Berger's laboratory. In the field, artifacts were bagged in 4-mil, resealable polyethylene bags. Artifact cards bearing provenience information were included in the plastic bags. A Field Number was assigned to each unique provenience in the field. This number appears with all the provenience information and is used throughout processing and analysis to track artifacts.

In the laboratory, provenience information on each artifact card was checked against a master list of Field Numbers with their proveniences. Any discrepancies were corrected at that time, and a Catalog Number was assigned to each provenience, according to Virginia Department of Historic Resources guidelines.

Prehistoric lithics and most historic artifacts were washed in water with a soft toothbrush. Faunal material and fragile artifacts were wet-brushed with a soft natural-bristle paintbrush or were simply dry-brushed. Metal objects were cleaned using a dry toothbrush or stainless steel wire brush. All artifacts were laid out to air-dry in preparation for analysis.

During analysis, individual Specimen Numbers were assigned to artifacts within each Catalog Number. After analysis, the artifacts were re-bagged into clean perforated 4-mil resealable polyethylene bags. Artifacts are organized sequentially first by Site Number, then by Catalog Number, and finally by Specimen Number within each Catalog Number. An acid-free artifact card listing full provenience information and analytical class was included in each bag.

Artifacts were marked with provenience information following the below format, using black waterproof India ink on a base of Rhoplex AC-33. The label was then sealed with a top coat of 10 percent polyvinyl acetate (PVA) in acetone.

(State Site Number) Ex.: 44AX48
(Catalog #) - (Specimen #) 56-12

B. ANALYTICAL METHODS

All artifact analyses were conducted by the Laboratory Supervisor and/or Material Specialist(s). Berger maintains an extensive comparative collection and laboratory research library to aid in making complete and accurate analyses.

Berger has developed a flexible analytical database system that fully integrates all artifacts in one database for use in data manipulation and interpretation. The computerized data management system is written using Paradox® 9, a relational database development package that runs on a Windows® platform.

Each class of artifacts (historic ceramics, curved (vessel) glass, small finds/architectural, historic tobacco pipes, lithics, and faunal) has a series of attributes, sometimes unique to that class, that are recorded to describe each artifact under analysis. Artifact information (characteristics), recorded on the data entry forms by the analysts, was entered into the system. The system was then used to enhance the artifact records with the addition of provenience information. Berger maintains a complete type and attribute coding book for each analytical class.

The artifact coding system employs a Type/SubType system developed by Berger's Cultural Resources Division. The format for the historic artifacts is based on the South/Noël Hume typology (South 1977),

as modified for use in a computerized system (Berger 2006). The prehistoric lithics system is based on Taylor et al. (1996), modified for use in a computerized system (Berger 2006).

The Type/SubType system is composed of a three-letter code followed by a number (integer). The first letter of the code represents the specific Class to which that artifact belongs: C, for Historic Ceramics; G, for Curved (Vessel) Glass; S, for Small Finds/Architectural; P, for Historic Tobacco Pipes; L, for Lithics; and Z, for Faunal. The second and third letters and number represent further subdivisions of the artifact groups within the class and are defined below for each analytical class.

C. HISTORIC CERAMIC ANALYSIS

The ceramic tabulation provides the following information: identification of ware types and techniques of surface decoration; dates based on manufacturing and decorative techniques and, if present, makers' marks; identification of vessel forms and functions; and descriptions of decoration motifs. The following are explanations of the variables used in the coding process.

Type/SubType. As mentioned previously, the first letter in the type codes for Historic Ceramics is always C. The second letter refers to general ware groups: E, for Coarse Earthenwares; R, for Refined Earthenwares; S, for Coarse Stonewares; F, for Refined Stonewares; P, for Porcelain; and O, for Other and Unidentified. The third letter refers to specific ware types, e.g., R, for Redware; W, for Whiteware; and L, for Gray or Buff Stoneware. The Subtype numbers refer to particular decorative treatments or named types, e.g., CRW50 – Whiteware with Blue Transfer-Printed Decoration.

Begin/End Dates. Type/Subtype may be descriptive and undated or have specific dates which are automatically assigned by the database. Sources for these dates include but are not limited to Cameron (1986), Denker and Denker (1985), Miller (1980, 1987, 1991), Rickard (2006), and South (1977).

Form (Var 5). Form indicates the shape and possible function of the complete vessel as represented by the sherds present. General categories, such as "Tableware, Hollowware," are used for sherds whose small size or ambiguous characteristics make determination of form problematical. **Part (Var 7)** is used to indicate what part of a vessel is represented by the sherd(s) present.

D. CURVED (VESSEL) GLASS ANALYSIS

The glass artifacts from the collection were broken down, for analytical purposes, into four functionally distinct groupings based on Bottle, Table, Lighting, and Other use-categories. Window glass, considered more functionally inclusive under an architectural group of artifacts, was subsumed for analysis under Small Finds/Architectural materials, as discussed below. Variables used in the coding process are explained below.

Type/Subtype. The first letter of the Type code for Glass is always G. The second letter denotes the functional groupings: B, for Bottle; T, for Table; L, for Lighting; and O, for Other. The third letter denotes specific function within the appropriate use category, e.g., A, for Alcohol; T, for Tumbler; L, for Lamp; and U, for Unidentified. The Subtype numbers denotes vessel form, e.g., GBA1 – Wine Bottle; GTT41 – Tumbler/Paneled; GLL23 – Lamp Chimney; and GOU1 – Unidentified Curved/Vessel Glass.

All artifacts identified as to specific function and form were coded as such regardless of the degree of fragmentation. The specific vessel part(s) encountered are indicated by the coding of the appropriate fields, e.g., Base (Var 7) or Finish (Var 8).

Begin/End Date. Dating of the glass artifacts was completed according to established diagnostic criteria. These criteria, utilized either singly or in combination, can include various technological aspects of glass manufacture such as finish treatments, tooling methods, empontrilling techniques, mold markings, and Color (Var 9). Sources for glass dating include but are not limited to Jones and Sullivan (1985) and Miller and Sullivan (1984).

Finish (Var 8). Finish and rim type were identified as specific types within one-part (100s), two-part (200s), and three-part (300s) categories. Common names, such as “Screw,” were used when appropriate.

Base (Var 7). The majority of coded base types in the collection indicate the marks on the basal surfaces of glassware. “Snap case” indicates the lack of any markings when this device was used to hold a bottle in place while its finish was formed. Machine-made basal markings were also coded, if identifiable.

E. SMALL FINDS/ARCHITECTURAL ANALYSIS

For the small finds/architectural analysis, each artifact was identified by its group and class, Material Type (Var 3) and Part/Portion (Var 6), and received a count and/or weight. Additional information, including Characteristic (Var 5) and Color (Var 9), was recorded as identified for the individual artifacts. Variables used are defined below.

Type/Subtype. The first letter of the Type code for Small Finds/Architectural is always S. The second letter denotes the group of the artifact, e.g., A, for Architecture, and the third letter denotes a class within that group, e.g., F, for Fasteners. The Subtype number denotes the specific artifact type, e.g., SAF6 – Wire Nail.

Begin/End Date. Dates for certain artifact were generated in the database based on the Type/Subtype. Other dates were entered manually and were based on various artifact characteristics. References used for dating of artifacts include but are not limited to Edwards and Wells (1993), Krause and Mishler (2002), and Luscomb (1967).

Characteristic (Var 5). A modifier that best described the form or manufacturing technique of each artifact was entered in this field.

F. HISTORIC TOBACCO PIPES ANALYSIS

Pipes were identified by morphological type, Makers’ Mark (Var 1), Part (Var. 7), and Stem Bore Diameter (Var 9). The analysis is designed for descriptive purpose and to generate dates and Origin (Var 10) whenever possible.

Type/Subtype. The first and second letters of the Type code for Historic Tobacco Pipes are PT. The third letter identifies the artifact as a stem (S) or a general white clay bowl (E). The Subtype number further indicates specific bowl shapes and date ranges or stem characteristics.

Begin/End Date. Dates for pipes were generated by the database, based on the Type/Subtype codes. When a manufacturing range for a specific pipe could be determined based on other variables, the date was recorded and manually entered.

G. FAUNAL ANALYSIS

The analysis of the faunal material allowed for the identification of species, Element (Var 5), and any modification to the specimen, e.g., Burning (Var 7), Butchering (Var 1), etc. Identifications were made

with the aid of a comparative faunal type collection and the use of reference materials that include but are not limited to Schmid (1972).

Type/SubType. The first letter of the Type code for Faunal material is Z (for zoological). The second letter denotes the class of the animal, e.g., M, for Mammal; B, for Bird. The third letter distinguishes groups with the class, e.g., D, for Domestic; W, for Wild. The numeric Subtype code identifies species.

H. PREHISTORIC ARTIFACTS

Minimal amounts of prehistoric artifacts were recovered from this project. Analysis of these items also proceeded according to a Type/Subtype for each type of material. Minimal analysis of these artifacts was undertaken, primarily to show presence of data and/or to show potential mixing of deposits.

REFERENCES CITED

- Cameron, Elisabeth
1986 *Encyclopedia of Pottery & Porcelain: 1800-1960.* Facts on File Publications, New York.
- Denker, Ellen, and Bert Denker
1985 *The Main Street Pocket Guide to North American Pottery and Porcelain.* The Main Street Press, Pittstown, New Jersey.
- Edwards, Jay D., and Tom Wells
1993 Historic Louisiana Nails: Aids to the Dating of Old Buildings. The Fred B. Kniffen Cultural Resources Laboratory Monograph Series No. 2. Geoscience Publications, Louisiana State University, Baton Rouge.
- Jones, Olive R., and Catherine Sullivan
1985 *The Parks Canada Glass Glossary.* Studies in Archaeology, Architecture and History. National Historic Parks and Sites Branch, Parks Canada, Ottawa.
- Krause, Chester L. and Clifford Mishler
2002 *Standard Catalog of World Coins: 1701–1800, 3rd Edition.* Krause Publications, Iola, Wisconsin.
- The Louis Berger Group, Inc. [Berger]
2006 *Analytical Coding System for Historic and Prehistoric Artifacts.* Prepared by Susan E. Butler and Todd D. Hejlik, the Cultural Resource division, The Louis Berger Group, Inc., Morristown, New Jersey.
- Luscomb, Sally C.
1967 *The Collector's Encyclopedia of Buttons.* Crown Publishers, Inc., New York.
- Miller, George L.
1980 Classification and Economic Scaling of 19th Century Ceramics. *Historical Archaeology* 14:1-40.
1987 Origins of Josiah Wedgwood's Pearlware. *Northeast Historical Archaeology* 16:80-92.

- 1991 A Revised Set of CC Index Values for Classification and Economic Scaling of English Ceramics from 1787 to 1880. *Historical Archaeology* 25(1):1-25.
- Miller, George L., and Catherine Sullivan
1984 Machine-Made Glass Containers and the End of Production for Mouth-Blown Bottles. *Historical Archaeology* 18(2): 83-96.
- Rickard, Jonathan
2006 *Mocha and Related Dipped Ware, 1770–1939*. University Press of New England, Lebanon, New Hampshire.
- Schmid, Elisabeth
1972 *Atlas of Animal Bones: For Prehistorians, Archaeologists, and Quaternary Geologists*. Elsevier Publishing Company, Amsterdam.
- South, Stanley
1977 *Method and Theory in Historical Archaeology*. Academic Press, New York.
- Taylor, Randolph, and Brad Koldehoff, with contributions and revisions from Alex Ortiz, Robert Wall, and Ludomir Lozny
1996 *A Guide to Lithica: An R-Base Lithic Analysis System*. Prepared for the Cultural Resource division, The Louis Berger Group, Inc., East Orange, New Jersey.

Utilized Codes for CXE 4578, Site 44AX48, Lee-Fendall House, Garden, Alexandria, VA Ph. II

Lithics

Var1 Meaning	Var2 Meaning	Var3 Meaning	Var4 Meaning	Var5 Meaning	Var6 Meaning	Var7 Meaning	Var8 Meaning	Var9 Meaning	Var10 Meaning	Var11 Meaning
Point Type	Termination	Flake Scars	Modification	Platform Type	Cortex	Temporal Affiliation	Size Category			

Var3 Translation
531 Quartz
581 Chalcedony

Var9 Translation
1 Absent

Var7 Translation
1 No Heating Present

Historic Ceramic

Var1 Meaning	Var2 Meaning	Var3 Meaning	Var4 Meaning	Var5 Meaning	Var6 Meaning	Var7 Meaning	Var8 Meaning	Var9 Meaning	Var10 Meaning	Var11 Meaning
Maker's Mark	Vessel Number	Motif/Pattern	Form	Percent Complete	Part	Color	Wear			

Var1 Translation
904 Unidentifiable printed maker's mark
905 Unidentifiable cypher mark

Cmt	Comment Trans
16	From Flotation

Var4 Translation	Var9 Translation	Var5 Translation
2 Unidentifiable Motif	6 Blue & Brown	50 Plate-Unidentified Diameter
101 Large Scale Floral	10 White	77 Unidentified Tableware, Flatware
102 Small Scale Floral	11 Blue & White	78 Unidentified Tableware, Hollowware
110 Floral w/ Black Stems	19 See Written Comments	79 Unidentified Tableware
140 Landscape - General	30 Red	94 Teacup w/o Handle - General
168 Floral - Linear	39 Olive Green	98 Teacup - General
200 Chinoiserie - General	40 Green	103 Coffee Cup
201 Chinoiserie - Landscape	50 Blue	106 Saucer/Bowl Diameter Unknown
222 Chinoiserie - Border	60 Black	109 Tea Pot
226 Chinoiserie - Fish Scale and Roe Border	61 Dark Brown	126 Bottle
239 Stripe	62 Brown	140 Unidentified Drinking/Service Vessel
553 Stripe	73 Various Shades of Brown on One Vessel	215 Bowl - Depth & Diameter Unknown
557 Dendritic - Mocha	97 Unidentified - Only Shadow of Decoration	226 Shallow Bowl/Dish 4"-6"
610 Miscellaneous Incised - Blue	Remains	357 Miscellaneous Storage/Serving Vessel
615 Incised/Banded (Annular)	101 Blue, Green, & Brown	520 Flower Pot
628 Brown Slipped, Interior & Exterior	105 Green & Orange	
677 Albany Type Slip, Interior Only	114 Blue, Green, & Orange	
748 Unglazed Interior, Exterior Spalled		
750 Glazed Interior Only		
752 Glazed Both Surfaces		
753 Glazed Interior, Exterior Spalled		
965 Wheat Variant		
970 Paneled - General		
987 Shell Edge-Scalloped; Rim, Curved Lines - General		
993 Shell Edge - General		
1011 Floral - General		
1020 Indeterminate Molded Motif		

Var7 Translation
1 Body
2 Rim
3 Base
5 Rim & Body
6 Base & Body
7 Handle
9 Rim, Body & Base
41 Body & Handle
45 Footring

Utilized Codes for CXE 4578, Site 44AX48, Lee-Fendall House, Garden, Alexandria, VA Ph. II

Faunal

Var1 Meaning	Var2 Meaning	Var3 Meaning	Var4 Meaning	Var5 Meaning	Var6 Meaning	Var7 Meaning	Var8 Meaning	Var9 Meaning	Var10 Meaning	Var11 Meaning																																																																																																																																				
Butchering Type	Age/Fusion	Illustrated Meat Cut	Element	Portion	Burning	Gnawing	Weathering	MNU Type																																																																																																																																						
<table border="1"> <tr> <td>Var1 Translation</td> <td colspan="10"></td> </tr> <tr> <td>1</td> <td>Sawed</td> <td colspan="9"></td> </tr> </table>											Var1 Translation											1	Sawed																																																																																																																							
Var1 Translation																																																																																																																																														
1	Sawed																																																																																																																																													
<table border="1"> <tr> <td>Var6 Translation</td> <td colspan="10"></td> </tr> <tr> <td>1</td> <td>Whole</td> <td colspan="9"></td> </tr> <tr> <td>2</td> <td>Fragment</td> <td colspan="9"></td> </tr> <tr> <td>5</td> <td>Shaft</td> <td colspan="9"></td> </tr> <tr> <td>6</td> <td>Proximal Fragment</td> <td colspan="9"></td> </tr> <tr> <td>12</td> <td>Epiphysis</td> <td colspan="9"></td> </tr> </table>											Var6 Translation											1	Whole										2	Fragment										5	Shaft										6	Proximal Fragment										12	Epiphysis																																																																											
Var6 Translation																																																																																																																																														
1	Whole																																																																																																																																													
2	Fragment																																																																																																																																													
5	Shaft																																																																																																																																													
6	Proximal Fragment																																																																																																																																													
12	Epiphysis																																																																																																																																													
<table border="1"> <tr> <td>Var7 Translation</td> <td colspan="10"></td> </tr> <tr> <td>4</td> <td>Calcined</td> <td colspan="9"></td> </tr> </table>											Var7 Translation											4	Calcined																																																																																																																							
Var7 Translation																																																																																																																																														
4	Calcined																																																																																																																																													
<table border="1"> <tr> <td>Var5 Translation</td> <td colspan="10"></td> </tr> <tr> <td>7</td> <td>Mandible</td> <td colspan="9"></td> </tr> <tr> <td>13</td> <td>Molar</td> <td colspan="9"></td> </tr> <tr> <td>30</td> <td>Vertebra</td> <td colspan="9"></td> </tr> <tr> <td>38</td> <td>Rib</td> <td colspan="9"></td> </tr> <tr> <td>50</td> <td>Scapula</td> <td colspan="9"></td> </tr> <tr> <td>60</td> <td>Humerus</td> <td colspan="9"></td> </tr> <tr> <td>61</td> <td>Radius</td> <td colspan="9"></td> </tr> <tr> <td>111</td> <td>Astragalus</td> <td colspan="9"></td> </tr> <tr> <td>120</td> <td>Longbone</td> <td colspan="9"></td> </tr> <tr> <td>700</td> <td>Shell</td> <td colspan="9"></td> </tr> <tr> <td>999</td> <td>Unidentified</td> <td colspan="9"></td> </tr> </table>											Var5 Translation											7	Mandible										13	Molar										30	Vertebra										38	Rib										50	Scapula										60	Humerus										61	Radius										111	Astragalus										120	Longbone										700	Shell										999	Unidentified									
Var5 Translation																																																																																																																																														
7	Mandible																																																																																																																																													
13	Molar																																																																																																																																													
30	Vertebra																																																																																																																																													
38	Rib																																																																																																																																													
50	Scapula																																																																																																																																													
60	Humerus																																																																																																																																													
61	Radius																																																																																																																																													
111	Astragalus																																																																																																																																													
120	Longbone																																																																																																																																													
700	Shell																																																																																																																																													
999	Unidentified																																																																																																																																													

Floral

Var1 Meaning	Var2 Meaning	Var3 Meaning	Var4 Meaning	Var5 Meaning	Var6 Meaning	Var7 Meaning	Var8 Meaning	Var9 Meaning	Var10 Meaning	Var11 Meaning																																												
		Cultural Use	Element	Percent Complete	Burning																																																	
<table border="1"> <tr> <td>Var3 Translation</td> <td colspan="10"></td> </tr> <tr> <td>1</td> <td>Cultivated</td> <td colspan="9"></td> </tr> <tr> <td>2</td> <td>Exploited</td> <td colspan="9"></td> </tr> <tr> <td>8</td> <td>Indeterminate</td> <td colspan="9"></td> </tr> </table>											Var3 Translation											1	Cultivated										2	Exploited										8	Indeterminate									
Var3 Translation																																																						
1	Cultivated																																																					
2	Exploited																																																					
8	Indeterminate																																																					
<table border="1"> <tr> <td>Var6 Translation</td> <td colspan="10"></td> </tr> <tr> <td>1</td> <td>Whole</td> <td colspan="9"></td> </tr> <tr> <td>2</td> <td>Fragment</td> <td colspan="9"></td> </tr> </table>											Var6 Translation											1	Whole										2	Fragment																				
Var6 Translation																																																						
1	Whole																																																					
2	Fragment																																																					
<table border="1"> <tr> <td>Var7 Translation</td> <td colspan="10"></td> </tr> <tr> <td>10</td> <td>Carbonized</td> <td colspan="9"></td> </tr> </table>											Var7 Translation											10	Carbonized																															
Var7 Translation																																																						
10	Carbonized																																																					
<table border="1"> <tr> <td>Var5 Translation</td> <td colspan="10"></td> </tr> <tr> <td>2</td> <td>Seed</td> <td colspan="9"></td> </tr> <tr> <td>50</td> <td>Wood</td> <td colspan="9"></td> </tr> </table>											Var5 Translation											2	Seed										50	Wood																				
Var5 Translation																																																						
2	Seed																																																					
50	Wood																																																					
<table border="1"> <tr> <td>Cmt Comment Trans</td> <td colspan="10"></td> </tr> <tr> <td>16</td> <td>From Flotation</td> <td colspan="9"></td> </tr> </table>											Cmt Comment Trans											16	From Flotation																															
Cmt Comment Trans																																																						
16	From Flotation																																																					

Utilized Codes for CXE 4578, Site 44AX48, Lee-Fendall House, Garden, Alexandria, VA Ph. II

Pattern Group and Class Translations

PatGrp	Pattern Analysis Group	PatCls	Pattern Analysis Class
0	Unidentified	0	Unidentified
1	Kitchen	2	Bottles/Jars/Cans
2	Architecture	3	Tumblers/Wine Glasses
4	Arms	4	Tableware
5	Clothing	5	Misc. Drinking Vessels/Containers
6	Personal	7	Food Preparation/Storage
7	Tobacco Pipes	10	Kitchen - Other
8	Other	11	Window Glass/Caming/Etc.
9	Prehistoric Lithics	12	Nails, Spikes, Tacks, etc., and Misc. Construction Hardware
11	Faunal	15	Plumbing/Heating/Fixtures
12	Floral	16	Misc. Building Materials/Floor Covering/Roofing Materials
13	Recreation	26	Ammunition
14	Business/Commerce	31	Clothing Fasteners
18	Household/Domestic	40	Coins
19	Hardware, Tools, & Machinery	41	Keys
		51	White Clay Pipes
		59	Toys
		63	Heating Related
		90	Chipped Stone
		111	Miscellaneous Household Related
		115	Miscellaneous Hardware
		116	Tableware/Serving
		117	Teaware
		125	Domesticated/Exploited
		126	Non-Domesticated
		127	Faunal - Other
		130	Cultivated
		131	Exploited
		135	Unidentified

Utilized Codes for CXE 4578, Site 44AX48, Lee-Fendall House, Garden, Alexandria, VA Ph. II

Analytical Type Codes & Translations: Class -- Type -- Type Description -- Type Group

Class	Type	Type Description	Type Group
Faunal	ZAZ	Unidentified Bone	UNIDENTIFIED BONE
Faunal	ZMD	Domesticated	MAMMALS
Faunal	ZMR	Rodents	MAMMALS
Faunal	ZMZ	Unidentified Mammal	MAMMALS
Faunal	ZXZ	Unidentified Shell	SHELL - UNIDENTIFIED
Floral	FAP	Pinaceae	GYMNOSPERMS
Floral	FAT	General (No Family)	GYMNOSPERMS
Floral	FDC	Aceraeae	ANGIOSPERMS DICOTS
Floral	FMG	Poaceae	ANGIOSPERMS MONOCOTS
Floral	FTN	Juglandaceae	ANGIOSPERMS DICOTS
Floral	FTO	Facaceae	ANGIOSPERMS DICOTS
Floral	FTT	General (No Family)	ANGIOSPERMS DICOTS
Floral	FZA		MISCELLANEOUS FLORAL
Glass	GBA	Alcohol	BOTTLE GLASS
Glass	GBF	Foods	BOTTLE GLASS
Glass	GBU	Unidentified	BOTTLE GLASS
Glass	GOU	Unidentified - Other	OTHER GLASS
Glass	GTT	Tumblers	TABLE GLASS
Glass	GTU	Unidentified	TABLE GLASS
Glass	GTX	Miscellaneous Tableware Associated	TABLE GLASS
Hceramic	CEH	Buff/White Bodied Earthenware	EARTHENWARES
Hceramic	CER	Red Bodied Earthenware	EARTHENWARES
Hceramic	CES	Red Bodied Slipware	EARTHENWARES
Hceramic	CFL	Gray Stoneware/Non-American-Made	STONEWARES
Hceramic	CFT	White Salt Glazed	STONEWARES
Hceramic	CPF	Soft Paste Porcelain	PORCELAIN
Hceramic	CPJ	Hard Paste Porcelain	PORCELAIN
Hceramic	CPP	Oriental Porcelain	PORCELAIN
Hceramic	CRC	Creamware	EARTHENWARES
Hceramic	CRD	Delftware	EARTHENWARES
Hceramic	CRI	Ironstone	EARTHENWARES
Hceramic	CRK	Other Refined Earthenware	EARTHENWARES
Hceramic	CRP	Pearlware	EARTHENWARES
Hceramic	CRW	Whiteware	EARTHENWARES
Hceramic	CRY	Yellowware	EARTHENWARES
Hceramic	CSB	Brown Stoneware	STONEWARES
Hceramic	CSL	Gray Stoneware	STONEWARES
Lithics	LBF	Bifaces	CHIPPED STONE
Lithics	LDB	Debitage	CHIPPED STONE
Pipes	PTE	White Clay Pipe Bowl Shapes	TOBACCO PIPES
Pipes	PTS	White Clay Pipe Stems	TOBACCO PIPES
			ARCHITECTURAL
			ARCHITECTURAL
			ARCHITECTURAL
			ARCHITECTURAL
			ARCHITECTURAL
			BUSINESS/COMMERCE
			CLOTHING
			ARMS & AMMUNITION
			HEATING MATERIALS & BY-PRODUCTS
			HARDWARE, TOOLS, & MACHINERY
			UNIDENTIFIED
			PERSONAL
			RECREATION
			RECREATION
			Building Materials
			Fasteners
			Glass
			Plumbing/Heating
			Tile and Floor Covering
			Coins
			Fasteners
			Ammunition
			Heating Materials and By-Products
			Hardware (Non-Architectural)
			Unidentified
			Other Personal Items
			Marbles
			Toys

Site	Cat	Spec	Fld	Tr	STP	Unit	Str	Lev	Fea	Type	Style	Translation	V1	V3	V4	V5	V6	V7	V8	V9	Ptn	Note	
													Cnt	Wght	Beg-End Date								
44AX48	1	1	172	-	1	-	C	-	-	CR-C	0	Creamware	-	-	-	78	-	1	-	-	1.4	-	
44AX48	1	2	172	-	1	-	C	-	-	CR-P	35	Pearlware - Underglaze Handpainted - Blue	-	-	2	79	-	1	-	50	1.4	-	
44AX48	1	3	172	-	1	-	C	-	-	CR-I	0	Ironstone	-	-	-	79	-	1	-	-	1.4	-	
44AX48	1	4	172	-	1	-	C	-	-	GBU	4	Unidentified Bottle/Jar-Body	-	-	-	-	-	-	-	5	0.2	-	
44AX48	1	5	172	-	1	-	C	-	-	SAG	11	Broad Glass	-	320	-	2	-	-	-	11	2.11	-	
44AX48	1	6	172	-	1	-	C	-	-	SAF	5	Machine Cut/Wrought Nail	-	624	-	2	-	-	-	-	2.12	-	
44AX48	2	1	173	-	1	-	D	-	-	CER	61	Redware - Dark Brown Glaze	-	-	752	357	-	1	-	61	1.7	-	
44AX48	2	2	173	-	1	-	D	-	-	CR-P	50	Pearlware - Transfer Printed - Blue, with Stipple	-	-	222	79	-	1	-	50	1.4	-	
44AX48	2	3	173	-	1	-	D	-	-	CR-P	0	Pearlware	-	-	-	50	-	6	-	-	1.4	-	
44AX48	2	4	173	-	1	-	D	-	-	SAG	11	Broad Glass	-	320	-	2	-	-	-	11	2.11	-	
44AX48	2	5	173	-	1	-	D	-	-	SAF	5	Machine Cut/Wrought Nail	-	624	-	414	2	-	-	-	2.12	-	
44AX48	2	6	173	-	1	-	D	-	-	SCF	50	Pressed Glass Button	-	320	-	23	1	-	-	13	5.31	-	
44AX48	3	1	174	-	2	-	A	-	-	CR-P	0	Pearlware	-	-	-	79	-	1	-	-	1.4	-	
44AX48	3	2	174	-	2	-	A	-	-	CPJ	0	Hard Paste Porcelain	-	-	-	79	-	1	-	-	1.4	-	
44AX48	3	3	174	-	2	-	A	-	-	GBU	4	Unidentified Bottle/Jar-Body	-	-	-	-	-	-	-	3	0.2	-	
44AX48	3	4	174	-	2	-	A	-	-	GBU	4	Unidentified Bottle/Jar-Body	-	-	-	-	-	-	-	5	0.2	-	
44AX48	3	5	174	-	2	-	A	-	-	GOU	1	Unidentified Curved/Vessel Glass	-	-	-	-	-	-	-	1	0.0	-	
44AX48	3	6	174	-	2	-	A	-	-	SAG	11	Broad Glass	-	320	-	2	-	-	-	11	2.11	-	
44AX48	3	7	174	-	2	-	A	-	-	SAP	2	Salt-Glazed Slipped Drain Pipe	-	220	-	598	2	-	-	-	2.15	-	
44AX48	3	8	174	-	2	-	A	-	-	SOS	1	Unidentified Metal	-	-	624	-	2	-	-	-	0.0	-	
44AX48	4	1	175	-	2	-	C	-	-	SAG	11	Broad Glass	-	320	-	-	2	-	-	11	2.11	-	
44AX48	5	1	177	-	3	-	A	-	-	CR-W	0	Whiteware	-	-	-	79	-	1	-	-	1.4	-	
44AX48	5	2	177	-	3	-	A	-	-	CR-P	50	Pearlware - Transfer Printed - Blue, with Stipple	-	-	2	79	-	2	-	50	1.4	-	
44AX48	5	3	177	-	3	-	A	-	-	GOU	1	Unidentified Curved/Vessel Glass	-	-	-	-	-	-	-	2	0.0	-	
44AX48	5	4	177	-	3	-	A	-	-	SAG	11	Broad Glass	-	320	-	-	2	-	-	11	2.11	-	
44AX48	6	1	178	-	3	-	B	-	-	CR-P	0	Pearlware	-	-	-	79	-	1	-	-	1.4	-	
44AX48	6	2	178	-	3	-	B	-	-	CR-W	0	Whiteware	-	-	-	79	-	1	-	-	1.4	-	
44AX48	6	3	178	-	3	-	B	-	-	CR-W	52	Whiteware - Transfer Printed - Brown	-	-	102	79	-	1	-	62	1.4	-	
44AX48	6	4	178	-	3	-	B	-	-	SAG	11	Broad Glass	-	320	-	-	2	-	-	11	2.11	-	
44AX48	7	1	179	-	3	-	C	-	-	CR-C	0	Creamware	-	-	-	79	-	1	-	-	1.4	-	
44AX48	7	2	179	-	3	-	C	-	-	CR-P	35	Pearlware - Underglaze Handpainted - Blue	-	-	102	79	-	1	-	50	1.4	-	
44AX48	7	3	179	-	3	-	C	-	-	CR-W	0	Whiteware	-	-	-	79	-	1	-	-	1.4	-	
44AX48	7	4	179	-	3	-	C	-	-	CER	61	Redware - Dark Brown Glaze	-	-	752	357	-	1	-	61	1.7	-	
44AX48	7	5	179	-	3	-	C	-	-	SAG	11	Broad Glass	-	320	-	-	2	-	-	11	2.11	-	
44AX48	7	6	179	-	3	-	C	-	-	SAF	7	Unidentified Nail	-	624	-	-	2	-	-	-	2.12	-	
44AX48	7	7	179	-	3	-	C	-	-	SOS	1	Unidentified Metal	-	624	-	-	2	-	-	-	0.0	-	
44AX48	8	1	180	-	4	-	A	-	-	CR-W	0	Whiteware	-	-	-	79	-	1	-	-	1.4	-	

Site	Cat	Spec	Fld	Tr	STP	Unit	Str	Lev	Fea	Type	Style	Translation	Cnt	Wght	Beg-End Date	V1	V3	V4	V5	V6	V7	V8	V9	Ptn	Note
44AX48	8	2	180	-	4	-	A	-	-	CRW 35	-	Whiteware - Underglaze Handpainted	1	-	1820	-	239	79	-	2	-	40	1.4	both surfaces decorated	
44AX48	8	3	180	-	4	-	A	-	-	GBU 4	-	Unidentified Bottle/Jar-Body	1	-	-	-	-	-	-	-	-	5	0.2	-	
44AX48	8	4	180	-	4	-	A	-	-	GBU 4	-	Unidentified Bottle/Jar-Body	1	-	-	-	-	-	-	-	-	7	0.2	-	
44AX48	8	5	180	-	4	-	A	-	-	GBU 4	-	Unidentified Bottle/Jar-Body	1	-	-	-	-	-	-	-	-	9	0.2	-	
44AX48	8	6	180	-	4	-	A	-	-	GBU 4	-	Unidentified Bottle/Jar-Body	5	-	-	-	-	-	-	-	-	1	0.2	-	
44AX48	8	7	180	-	4	-	A	-	-	SAG 11	-	Broad Glass	6	2.5	1926	320	-	-	2	-	-	11	2.11	-	
44AX48	9	1	182	-	5	-	A	-	-	GBU 4	-	Unidentified Bottle/Jar-Body	5	-	-	-	-	-	-	-	-	1	0.2	-	
44AX48	9	2	182	-	5	-	A	-	-	SAG 11	-	Broad Glass	6	4.1	1926	320	-	-	2	-	-	11	2.11	-	
44AX48	10	1	183	-	5	-	C	-	-	CRW 0	-	Whiteware	1	-	1820	-	-	79	-	1	-	-	1.4	-	
44AX48	10	2	183	-	5	-	C	-	-	CSL 0	-	Stoneware - Gray Salt Glazed	1	-	-	-	-	357	-	1	-	-	1.7	-	
44AX48	10	3	183	-	5	-	C	-	-	SAG 11	-	Broad Glass	3	1.6	1926	320	-	-	2	-	-	11	2.11	-	
44AX48	11	1	184	-	6	-	A	-	-	CRW 0	-	Whiteware	2	-	1820	-	-	79	-	1	-	-	1.4	-	
44AX48	11	2	184	-	6	-	A	-	-	GOU 2	-	Unidentified Curved Vessel Glass/Melted	1	-	-	-	-	-	-	-	-	1	0.0	melted	
44AX48	11	3	184	-	6	-	A	-	-	SAG 11	-	Broad Glass	2	0.7	1926	320	-	-	2	-	-	1	2.11	-	
44AX48	11	4	184	-	6	-	A	-	-	SAF 5	-	Machine Cut/Wrought Nail	3	-	-	624	-	414	2	-	-	-	2.12	-	
44AX48	12	1	185	-	7	-	A	-	-	GOU 1	-	Unidentified Curved Vessel Glass	1	-	-	-	-	-	-	-	-	1	0.0	-	
44AX48	12	2	185	-	7	-	A	-	-	SAF 5	-	Machine Cut/Wrought Nail	1	-	-	624	-	-	2	-	-	-	2.12	-	
44AX48	12	3	185	-	7	-	A	-	-	SAG 11	-	Broad Glass	3	1.4	1926	320	-	-	2	-	-	11	2.11	-	
44AX48	13	1	186	-	8	-	A	-	-	GBU 4	-	Unidentified Bottle/Jar-Body	4	-	-	-	-	-	-	-	-	1	0.2	-	
44AX48	13	2	186	-	8	-	A	-	-	SAG 11	-	Broad Glass	1	0.8	1926	320	-	-	2	-	-	11	2.11	-	
44AX48	13	3	186	-	8	-	A	-	-	SAF 5	-	Machine Cut/Wrought Nail	1	-	-	624	-	-	2	-	-	-	2.12	-	
44AX48	14	1	188	-	9	-	A	-	-	CEH 1	-	Bluff/White Bodied Earthenware - Unglazed	1	-	-	-	-	520	-	2	-	-	18.111	-	
44AX48	14	2	188	-	9	-	A	-	-	CER 62	-	Redware - Brown Glaze	1	-	-	-	752	357	-	1	-	62	1.7	-	
44AX48	14	3	188	-	9	-	A	-	-	CRP 10	-	Pearlware - Shell Edge - Blue	1	-	1800 1840	-	987	79	-	2	-	50	1.4	-	
44AX48	14	4	188	-	9	-	A	-	-	CRW 50	-	Whiteware - Transfer Printed - Blue	1	-	1820 1915	-	226	77	-	2	-	50	1.4	-	
44AX48	14	5	188	-	9	-	A	-	-	CRW 0	-	Whiteware	1	-	1820	-	-	79	-	1	-	-	1.4	-	
44AX48	14	6	188	-	9	-	A	-	-	GBU 4	-	Unidentified Bottle/Jar-Body	2	-	-	-	-	-	-	-	-	1	0.2	-	
44AX48	14	7	188	-	9	-	A	-	-	GBU 4	-	Unidentified Bottle/Jar-Body	1	-	-	-	-	-	-	-	-	5	0.2	-	
44AX48	14	8	188	-	9	-	A	-	-	SAG 11	-	Broad Glass	5	0.7	1926	320	-	-	2	-	-	11	2.11	-	
44AX48	15	1	189	-	9	-	B	-	-	CRW 0	-	Creamware	2	-	1762 1820	-	-	79	-	1	-	-	1.4	-	
44AX48	15	2	189	-	9	-	B	-	-	GBA 1	-	Wine Bottle	1	-	-	-	-	-	-	-	-	5	1.2	-	
44AX48	15	3	189	-	9	-	B	-	-	GBU 4	-	Unidentified Bottle/Jar-Body	1	-	-	-	-	-	-	-	-	5	0.2	-	
44AX48	15	4	189	-	9	-	B	-	-	SAF 74	-	Machine Cut Nail - Unknown Head	1	-	1790	624	-	414	2	-	-	-	2.12	-	
44AX48	15	5	189	-	9	-	B	-	-	SCF 47	-	1-pc. Construction Button	1	-	-	604	-	703	1	-	-	-	5.31	-	
44AX48	15	6	189	-	9	-	B	-	-	ZAZ 1	-	Unidentified Bone	3	0.8	-	-	-	999	2	-	-	-	11.127	-	
44AX48	16	1	190	-	9	-	C	-	-	CRW 0	-	Creamware	2	-	1762 1820	-	-	79	-	1	-	-	1.4	-	
44AX48	16	2	190	-	9	-	C	-	-	CRP 0	-	Pearlware	3	-	1775 1840	-	-	79	-	1	-	-	1.4	-	

Site	Cat	Spec	Fld	Tr	STP	Unit	Str	Lev	Fea	Type	Style	Translation	V1	V3	V4	V5	V6	V7	V8	V9	Ptn	Note	
													Cnt	Wght	Beg-End Date								
44AX48	16	3	190	-	9	-	C	-	-	GOU 3		Unidentified Table or Lighting Glass	-	-	-	-	-	-	-	1	0.0	-	
44AX48	16	4	190	-	9	-	C	-	-	SAG 11		Broad Glass	320	-	320	-	2	-	-	11	2.11	-	
44AX48	16	5	190	-	9	-	C	-	-	SAF 7		Unidentified Nail	624	-	624	-	2	-	-	-	2.12	-	
44AX48	16	6	190	-	9	-	C	-	-	ZAZ 1		Unidentified Bone	-	-	-	999	2	-	-	-	11.127	-	
44AX48	17	1	191	-	10	-	A	-	-	CRP 0		Pearlware	1775 1840	-	-	79	1	-	-	-	1.4	-	
44AX48	17	2	191	-	10	-	A	-	-	CRW 0		White ware	1820	-	-	79	1	-	-	-	1.4	-	
44AX48	17	3	191	-	10	-	A	-	-	OPP 0		Oriental Porcelain	1660 1860	-	-	79	1	-	-	-	1.4	-	
44AX48	17	4	191	-	10	-	A	-	-	SAG 11		Broad Glass	320	-	320	-	2	-	-	11	2.11	-	
44AX48	18	1	192	-	11	-	A	-	-	CER 1		Red ware - Unglazed	-	-	-	520	2	-	-	-	18.111	-	
44AX48	18	2	192	-	11	-	A	-	-	CSL 0		Stoneware - Gray Salt Glazed	-	-	-	357	2	-	-	-	1.7	-	
44AX48	18	3	192	-	11	-	A	-	-	SAG 11		Broad Glass	320	-	320	-	2	-	-	11	2.11	-	
44AX48	18	4	192	-	11	-	A	-	-	SAF 5		Machine Cut/Wrought Nail	624	-	624	414	2	-	-	-	2.12	-	
44AX48	19	1	193	-	12	-	A	-	-	SAG 11		Broad Glass	320	-	320	-	2	-	-	11	2.11	-	
44AX48	19	2	193	-	12	-	A	-	-	SAF 5		Machine Cut/Wrought Nail	624	-	624	414	2	-	-	-	2.12	-	
44AX48	20	1	194	-	13	-	A	-	-	GBA 1		Wine Bottle	-	-	-	-	-	-	-	5	1.2	-	
44AX48	20	2	194	-	13	-	A	-	-	GBU 4		Unidentified Bottle/Jar-Body	-	-	-	-	-	-	-	1	0.2	-	
44AX48	20	3	194	-	13	-	A	-	-	GBU 4		Unidentified Bottle/Jar-Body	-	-	-	-	-	-	-	9	0.2	melted	
44AX48	20	4	194	-	13	-	A	-	-	SAG 11		Broad Glass	320	-	320	-	2	-	-	11	2.11	-	
44AX48	21	1	195	-	13	-	B	-	-	SAG 11		Broad Glass	320	-	320	-	2	-	-	11	2.11	-	
44AX48	21	2	195	-	13	-	B	-	-	ZM5		Large Mammal	-	-	-	120	2	-	-	-	11.127	-	
44AX48	22	1	196	-	13	-	C	-	-	SAF 5		Machine Cut/Wrought Nail	624	-	624	414	2	-	-	-	2.12	-	
44AX48	22	2	196	-	13	-	C	-	-	LDB 9		Flake Fragment	581	-	581	-	1	-	-	1	9.90	-	
44AX48	23	1	197	-	14	-	A	-	-	CRP 11		Pearlware - Shell Edge - Green	1800 1840	-	987	77	2	-	40	1.4	-		
44AX48	23	2	197	-	14	-	A	-	-	CRP 0		Pearlware	1775 1840	-	-	79	1	-	-	-	1.4	-	
44AX48	23	3	197	-	14	-	A	-	-	SAF 7		Unidentified Nail	624	-	624	414	2	-	-	-	2.12	-	
44AX48	24	1	198	-	15	-	A	-	-	CRP 10		Pearlware - Shell Edge - Blue	1775 1840	-	993	77	2	-	50	1.4	-		
44AX48	24	2	198	-	15	-	A	-	-	CER 1		Red ware - Unglazed	-	-	-	520	2	-	-	-	18.111	-	
44AX48	24	3	198	-	15	-	A	-	-	CSL 11		Stoneware - Gray Salt Glazed w/ Albany Type Slip	1800 1940	-	677	357	1	-	-	-	1.7	-	
44AX48	25	1	199	-	16	-	A	-	-	CRP 0		Pearlware	1775 1840	-	-	79	1	-	-	-	1.4	-	
44AX48	25	2	199	-	16	-	A	-	-	OPP 0		Oriental Porcelain	1660 1860	-	-	98	6	-	-	-	1.117	-	
44AX48	25	3	199	-	16	-	A	-	-	SAG 11		Broad Glass	320	-	320	-	2	-	-	11	2.11	-	
44AX48	26	1	200	-	17	-	A	-	-	CRW 0		White ware	1820	-	-	79	1	-	-	-	1.4	-	
44AX48	26	2	200	-	17	-	A	-	-	CRW 57		White ware - Transfer Printed - Black	1820 1915	-	140	77	1	-	60	1.4	-		
44AX48	26	3	200	-	17	-	A	-	-	CRW 55		White ware - Transfer Printed - Other Colors	1825 1915	-	2	77	2	-	40	1.4	with scalloped rim		
44AX48	27	1	201	-	17	-	B	-	-	CRC 0		Creamware	1762 1820	-	-	79	1	-	-	-	1.4	-	
44AX48	27	2	201	-	17	-	B	-	-	CRP 10		Pearlware - Shell Edge - Blue	1800 1840	-	987	77	2	-	50	1.4	-		
44AX48	27	3	201	-	17	-	B	-	-	CRP 35		Pearlware - Underglaze Handpainted - Blue	1775 1820	-	2	79	1	-	50	1.4	-		

Site	Cat	Spec	Fld	Tr	STP	Unit	Str	Lev	Fea	Type	Style	Translation	Cnt	Wght	Beg-End Date	V1	V3	V4	V5	V6	V7	V8	V9	Ptn	Note
44AX48	27	4	201	-	17	-	B	-	-	GBU 4	-	Unidentified Bottle/Jar-Body	2	-	-	-	-	-	-	-	-	-	5	0.2	-
44AX48	27	5	201	-	17	-	B	-	-	SAG 11	-	Broad Glass	4	1.3	1926	320	-	-	-	2	-	-	11	2.11	-
44AX48	27	6	201	-	17	-	B	-	-	SAF 5	-	Machine Cut/Wrought Nail	1	-	-	624	-	-	414	2	-	-	-	2.12	-
44AX48	27	7	201	-	17	-	B	-	-	ZM 1	-	Unidentified Mammal	9	6.2	-	-	-	-	999	2	-	-	-	11.127	-
44AX48	28	1	202	-	17	-	C	-	-	CRC 0	-	Creamware	5	-	1762 1820	-	-	-	79	-	1	-	-	1.4	-
44AX48	28	2	202	-	17	-	C	-	-	CRP 35	-	Pearlware - Underglaze Handpainted - Blue	2	-	1775 1820	-	2	79	-	1	-	50	1.4	-	
44AX48	28	3	202	-	17	-	C	-	-	CRP 35	-	Pearlware - Underglaze Handpainted - Blue	1	-	1775 1820	-	239	79	-	2	-	50	1.4	stripe near rim	
44AX48	28	4	202	-	17	-	C	-	-	CRP 35	-	Pearlware - Underglaze Handpainted - Blue	1	-	1775 1820	-	239	79	-	2	-	50	1.4	stripe atop rim	
44AX48	28	5	202	-	17	-	C	-	-	GBU 4	-	Unidentified Bottle/Jar-Body	1	-	-	-	-	-	-	-	-	-	5	0.2	-
44AX48	28	6	202	-	17	-	C	-	-	SAG 11	-	Broad Glass	1	0.1	1926	320	-	-	-	2	-	-	11	2.11	-
44AX48	28	7	202	-	17	-	C	-	-	SAF 5	-	Machine Cut/Wrought Nail	2	-	-	624	-	-	-	2	-	-	-	2.12	-
44AX48	29	1	203	-	18	-	A	-	-	CER 1	-	Redware - Unglazed	1	-	-	-	-	520	-	-	2	-	-	18.111	-
44AX48	29	2	203	-	18	-	A	-	-	CRP 0	-	Pearlware	1	-	1775 1840	-	-	-	79	-	1	-	-	1.4	-
44AX48	29	3	203	-	18	-	A	-	-	GBU 4	-	Unidentified Bottle/Jar-Body	1	-	-	-	92	-	-	-	-	-	1	0.2	unidentified embossed lettering
44AX48	29	4	203	-	18	-	A	-	-	GBU 4	-	Unidentified Bottle/Jar-Body	1	-	-	-	-	-	-	-	-	-	1	0.2	-
44AX48	29	5	203	-	18	-	A	-	-	GBU 4	-	Unidentified Bottle/Jar-Body	2	-	-	-	-	-	-	-	-	-	3	0.2	-
44AX48	29	6	203	-	18	-	A	-	-	GBU 4	-	Unidentified Bottle/Jar-Body	1	-	-	-	-	-	-	-	-	-	3	0.2	melted
44AX48	29	7	203	-	18	-	A	-	-	GBU 4	-	Unidentified Bottle/Jar-Body	1	-	-	-	-	-	-	-	-	-	7	0.2	-
44AX48	29	8	203	-	18	-	A	-	-	GOU 2	-	Unidentified Curved/Vessel Glass/Melted	4	-	-	-	-	-	-	-	-	-	1	0.0	melted
44AX48	29	9	203	-	18	-	A	-	-	SAF 74	-	Machine Cut Nail - Unknown Head	1	-	1790	-	624	-	414	1	-	-	-	2.12	-
44AX48	29	10	203	-	18	-	A	-	-	SAF 5	-	Machine Cut/Wrought Nail	1	-	-	-	624	-	414	2	-	-	-	2.12	-
44AX48	30	1	204	-	18	-	B	-	-	CRP 0	-	Pearlware	1	-	1775 1840	-	-	-	79	-	1	-	-	1.4	-
44AX48	30	2	204	-	18	-	B	-	-	CRP 0	-	Pearlware	1	-	1775 1840	-	226	79	-	1	-	50	1.4	-	
44AX48	30	3	204	-	18	-	B	-	-	CER 1	-	Redware - Unglazed	1	-	-	-	-	520	-	1	-	-	-	18.111	-
44AX48	30	4	204	-	18	-	B	-	-	SAG 11	-	Broad Glass	7	30.0	1926	320	-	-	-	2	-	-	11	2.11	-
44AX48	30	5	204	-	18	-	B	-	-	PTS 98	-	Pipe Stem - Unmeasurable Fragment	1	-	-	-	-	-	-	-	3	-	1	7.51	-
44AX48	31	1	205	-	18	-	C	-	-	CRW 0	-	Whiteware	2	-	1820	-	-	-	79	-	1	-	-	1.4	-
44AX48	31	2	205	-	18	-	C	-	-	CPJ 0	-	Hard Paste Porcelain	1	-	-	-	-	50	-	2	-	-	-	1.4	-
44AX48	31	3	205	-	18	-	C	-	-	GBA 1	-	Wine Bottle	1	-	-	-	-	-	-	-	-	-	5	1.2	-
44AX48	31	4	205	-	18	-	C	-	-	SAG 11	-	Broad Glass	2	0.5	1926	320	-	-	-	2	-	-	11	2.11	-
44AX48	31	5	205	-	18	-	C	-	-	SAF 5	-	Machine Cut/Wrought Nail	3	-	-	-	624	-	-	2	-	-	-	2.12	-
44AX48	32	1	206	-	19	-	A	-	-	GBU 4	-	Unidentified Bottle/Jar-Body	2	-	-	-	-	-	-	-	-	-	1	0.2	-
44AX48	32	2	206	-	19	-	A	-	-	GBU 4	-	Unidentified Bottle/Jar-Body	1	-	-	-	-	-	-	-	-	-	3	0.2	-
44AX48	32	3	206	-	19	-	A	-	-	GBU 4	-	Unidentified Bottle/Jar-Body	1	-	-	-	-	-	-	-	-	-	3	0.2	melted
44AX48	32	4	206	-	19	-	A	-	-	GBU 4	-	Unidentified Bottle/Jar-Body	3	-	-	-	-	-	-	-	-	-	7	0.2	-
44AX48	32	5	206	-	19	-	A	-	-	GOU 3	-	Unidentified Table or Lighting Glass	1	-	-	-	-	-	-	-	-	-	1	0.0	-
44AX48	32	6	206	-	19	-	A	-	-	GOU 1	-	Unidentified Curved/Vessel Glass	1	-	-	-	-	-	-	-	-	-	9	0.0	-

Site	Cat	Spec	Fld	Tr	STP	Unit	Str	Lev	Fea	Type	Translation	V1	V3	V4	V5	V6	V7	V8	V9	Ptn	Note	
										Style		Beg-End	Wght	Cnt	Date							
44AX48	33	1	207	-	19	-	B	-	-	CER 1	Redware - Unglazed	-	-	-	520	-	1	-	-	18.111	-	
44AX48	34	1	208	-	19	-	C	-	-	CRP 0	Pearlware	-	-	-	79	-	1	-	-	1.4	-	
44AX48	34	2	208	-	19	-	C	-	-	GBU 4	Unidentified Bottle/Jar-Body	-	-	-	-	-	-	-	1	0.2	melted	
44AX48	35	1	209	-	19	-	D	-	-	CRC 0	Creamware	-	-	-	79	-	1	-	-	1.4	-	
44AX48	35	2	209	-	19	-	D	-	-	SAG 11	Broad Glass	320	-	-	2	-	-	11	2.11	-	-	
44AX48	35	3	209	-	19	-	D	-	-	SOS 10	Rock/Stone	1292	-	-	2	-	-	-	-	0.0	-	
44AX48	35	4	209	-	19	-	D	-	-	ZAZ 1	Unidentified Bone	-	-	-	999	2	4	-	-	11.127	-	
44AX48	35	5	209	-	19	-	D	-	-	ZAZ 1	Unidentified Bone	-	-	-	999	2	-	-	-	11.127	-	
44AX48	36	1	210	-	20	-	A	-	-	CRW 0	White ware	-	-	-	79	-	1	-	-	1.4	-	
44AX48	36	2	210	-	20	-	A	-	-	GBU 4	Unidentified Bottle/Jar-Body	-	-	-	-	-	-	-	1	0.2	-	
44AX48	36	3	210	-	20	-	A	-	-	SHB 1	Coal	-	-	-	-	-	-	-	-	8.63	-	
44AX48	37	1	211	-	21	-	A	-	-	CRW 0	White ware	-	520	-	-	2	-	-	-	1.4	-	
44AX48	37	2	211	-	21	-	A	-	-	SAF 5	Machine Cut/Wrought Nail	-	624	-	414	2	-	-	-	2.12	-	
44AX48	38	1	101	-	-	1	A	1	-	CER 1	Redware - Unglazed	-	-	-	520	-	1	-	18.111	-	-	
44AX48	38	2	101	-	-	1	A	1	-	GBF 2	Fruit Jar/Preserves	-	-	-	213	92	-	-	9	1.2	embossed "B[all]"	
44AX48	38	3	101	-	-	1	A	1	-	GBU 4	Unidentified Bottle/Jar-Body	-	-	-	-	-	-	-	1	0.2	-	
44AX48	38	4	101	-	-	1	A	1	-	GBU 4	Unidentified Bottle/Jar-Body	-	-	-	-	-	-	-	9	0.2	-	
44AX48	38	5	101	-	-	1	A	1	-	SAG 11	Broad Glass	320	-	-	2	-	-	11	2.11	-	-	
44AX48	38	6	101	-	-	1	A	1	-	SAF 74	Machine Cut Nail - Unknown Head	624	-	414	2	-	-	-	-	2.12	-	
44AX48	38	7	101	-	-	1	A	1	-	SAT 1	Tile	-	249	-	110	2	-	17	2.16	-	-	
44AX48	39	1	102	-	-	1	A	2	-	CRW 0	White ware	-	-	-	79	-	1	-	1.4	-	-	
44AX48	39	2	102	-	-	1	A	2	-	CRW 0	White ware	-	-	-	78	-	1	-	1.4	-	-	
44AX48	39	3	102	-	-	1	A	2	-	CRW 0	White ware	-	-	-	78	-	2	-	1.4	-	-	
44AX48	39	4	102	-	-	1	A	2	-	CRW 0	White ware	-	-	-	79	-	3	-	1.4	-	-	
44AX48	39	5	102	-	-	1	A	2	-	CRW 84	White ware - Colored Glaze	-	-	-	79	-	1	50	1.4	-	-	
44AX48	39	6	102	-	-	1	A	2	-	SAF 1	Handwrought Nail	624	-	435	1	-	-	-	2.12	-	-	
44AX48	39	7	102	-	-	1	A	2	-	CSL 81	Stoneware - Buff Salt Glazed	-	-	357	-	1	-	-	1.7	-	-	
44AX48	39	8	102	-	-	1	A	2	-	CER 1	Redware - Unglazed	-	-	520	-	1	-	-	18.111	-	-	
44AX48	39	9	102	-	-	1	A	2	-	CER 1	Redware - Unglazed	-	-	520	-	2	-	-	18.111	-	-	
44AX48	39	10	102	-	-	1	A	2	-	GBA 2	Liquor Bottle	-	-	-	-	-	-	7	1.2	-	-	
44AX48	39	11	102	-	-	1	A	2	-	GBU 4	Unidentified Bottle/Jar-Body	-	-	-	-	-	-	3	0.2	-	-	
44AX48	39	12	102	-	-	1	A	2	-	GBU 4	Unidentified Bottle/Jar-Body	-	-	-	-	-	-	9	0.2	-	-	
44AX48	39	13	102	-	-	1	A	2	-	SAG 11	Broad Glass	320	-	-	2	-	-	11	2.11	-	-	
44AX48	39	14	102	-	-	1	A	2	-	SAF 6	Wire Nail	624	-	414	2	-	-	-	2.12	-	-	
44AX48	39	15	102	-	-	1	A	2	-	SAF 74	Machine Cut Nail - Unknown Head	624	-	414	2	-	-	-	2.12	-	-	
44AX48	40	1	103	-	-	1	A	3	-	CRP 0	Pearlware	-	-	77	-	1	-	-	1.4	-	-	
44AX48	40	2	103	-	-	1	A	3	-	GBA 2	Liquor Bottle	-	-	1	-	-	-	7	1.2	-	-	

Site	Cat	Spec	Fld	Tr	STP	Unit	Str	Lev	Fea	Type	Style	Translation	Cnt	Wght	Beg-End Date	V1	V3	V4	V5	V6	V7	V8	V9	Ptn	Note
44AX48	40	3	103	-	-	1	A	3	-	SAF 1	-	Handwrought Nail	1	-	1820	-	624	-	435	1	-	-	-	2.12	-
44AX48	40	4	103	-	-	1	A	3	-	SAF 74	-	Machine Cut Nail - Unknown Head	1	-	1790	-	624	-	-	2	-	-	-	2.12	-
44AX48	41	1	104	-	-	1	C	4	-	CRC 0	-	Creamware	1	-	1762 1820	-	-	-	79	-	1	-	-	1.4	-
44AX48	41	2	104	-	-	1	C	4	-	CRP 32	-	Pearlware - Overglaze Handpainted - Polychrome	8	-	1775 1810	-	102	98	-	5	-	19	1.117	brown stems and orange flowers	
44AX48	41	3	104	-	-	1	C	4	-	CRP 0	-	Pearlware	1	-	1775 1840	-	-	79	-	1	-	-	1.4	-	
44AX48	41	4	104	-	-	1	C	4	-	SAG 11	-	Broad Glass	3	1.4	1926	-	320	-	2	-	-	11	2.11	-	
44AX48	41	5	104	-	-	1	C	4	-	SOS 1	-	Unidentified Metal	1	3.7	-	-	624	-	2	-	-	-	0.0	-	
44AX48	42	1	105	-	-	2	A	1	-	CSL 3	-	Stoneware - Gray Salt Glazed w/ Handpainted Decoration	1	-	-	-	2	357	-	1	-	50	1.7	-	
44AX48	42	2	105	-	-	2	A	1	-	GBU 4	-	Unidentified Bottle/Jar-Body	12	-	-	-	-	-	-	-	-	1	0.2	-	
44AX48	42	3	105	-	-	2	A	1	-	GBU 4	-	Unidentified Bottle/Jar-Body	5	-	-	-	-	-	-	-	-	9	0.2	-	
44AX48	42	4	105	-	-	2	A	1	-	GBU 4	-	Unidentified Bottle/Jar-Body	1	-	-	-	-	-	-	-	-	5	0.2	-	
44AX48	42	5	105	-	-	2	A	1	-	GBU 4	-	Unidentified Bottle/Jar-Body	22	-	-	-	-	-	-	-	-	17	0.2	-	
44AX48	42	6	105	-	-	2	A	1	-	GBU 4	-	Unidentified Bottle/Jar-Body	1	-	-	-	92	-	-	-	-	17	0.2	embossed "...OUNCES"	
44AX48	42	7	105	-	-	2	A	1	-	SAG 11	-	Broad Glass	6	4.7	1926	-	320	-	2	-	-	11	2.11	-	
44AX48	42	8	105	-	-	2	A	1	-	SAF 7	-	Unidentified Nail	6	-	-	-	624	-	2	-	-	-	2.12	-	
44AX48	43	1	106	-	-	2	B	2	-	CRP 10	-	Pearlware - Shell Edge - Blue	1	-	1775 1840	-	993	77	-	2	-	50	1.4	-	
44AX48	43	2	106	-	-	2	B	2	-	CRP 0	-	Pearlware	2	-	1775 1840	-	-	79	-	1	-	-	1.4	-	
44AX48	43	3	106	-	-	2	B	2	-	CRW 0	-	Whiteware	1	-	1820	-	-	79	-	3	-	-	1.4	-	
44AX48	43	4	106	-	-	2	B	2	-	CER 1	-	Redware - Unglazed	2	-	-	-	-	520	-	1	-	-	18.111	-	
44AX48	43	5	106	-	-	2	B	2	-	GBU 4	-	Unidentified Bottle/Jar-Body	1	-	-	-	-	-	-	-	-	1	0.2	-	
44AX48	43	6	106	-	-	2	B	2	-	GBU 4	-	Unidentified Bottle/Jar-Body	1	-	-	-	-	-	-	-	-	3	0.2	-	
44AX48	43	7	106	-	-	2	B	2	-	GBU 4	-	Unidentified Bottle/Jar-Body	1	-	-	-	-	-	-	-	-	7	0.2	-	
44AX48	43	8	106	-	-	2	B	2	-	GBU 4	-	Unidentified Bottle/Jar-Body	3	-	-	-	-	-	-	-	-	9	0.2	-	
44AX48	43	9	106	-	-	2	B	2	-	GBU 4	-	Unidentified Bottle/Jar-Body	4	-	-	-	-	-	-	-	-	17	0.2	-	
44AX48	43	10	106	-	-	2	B	2	-	GOU 1	-	Unidentified Curved Vessel Glass	6	-	-	-	-	-	-	-	-	1	0.0	-	
44AX48	43	11	106	-	-	2	B	2	-	SRT 98	-	Misc. Toy Parts	1	-	-	-	212	110	2	-	-	-	13.59	possible doll part	
44AX48	43	12	106	-	-	2	B	2	-	SAG 11	-	Broad Glass	23	16.9	1926	-	320	-	2	-	-	11	2.11	-	
44AX48	43	13	106	-	-	2	B	2	-	SAF 7	-	Unidentified Nail	6	-	-	-	624	-	2	-	-	-	2.12	-	
44AX48	43	14	106	-	-	2	B	2	-	SMH 15	-	Cotter Pin	1	-	-	-	624	-	1	-	-	-	19.115	-	
44AX48	43	15	106	-	-	2	B	2	-	SOS 1	-	Unidentified Metal	1	15.5	-	-	624	-	2	-	-	-	0.0	-	
44AX48	44	1	107	-	-	2	C	3	-	CRW 0	-	Whiteware	14	-	1820	-	-	79	-	1	-	-	1.4	-	
44AX48	44	2	107	-	-	2	C	3	-	CRW 0	-	Whiteware	1	-	1820	-	-	79	-	2	-	-	1.4	-	
44AX48	44	3	107	-	-	2	C	3	-	CRW 0	-	Whiteware	2	-	1820	-	-	79	-	3	-	-	1.4	-	
44AX48	44	4	107	-	-	2	C	3	-	CRP 0	-	Pearlware	1	-	1775 1840	-	-	79	-	1	-	-	1.4	-	
44AX48	44	5	107	-	-	2	C	3	-	CRP 10	-	Pearlware - Shell Edge - Blue	1	-	1775 1840	-	993	77	-	1	-	50	1.4	-	
44AX48	44	6	107	-	-	2	C	3	-	CRP 25	-	Pearlware - Embossed Body	1	-	1775 1840	-	1020	79	-	1	-	-	1.4	-	

Site	Cat	Spec	Fld	Tr	STP	Unit	Str	Lev	Fea	Type	Style	Translation	Cnt	Wght	Beg-End Date	V1	V3	V4	V5	V6	V7	V8	V9	Ptn	Note
44AX48	44	7	107	-	-	2	C	3	-	CRP 35		Pearlware - Underglaze Handpainted - Blue	1	-	1775 1820	-	2	79	-	1	-	50	1.4	-	
44AX48	44	8	107	-	-	2	C	3	-	CRP 36		Pearlware - Underglaze Handpainted - Polychrome	1	-	1795 1825	-	102	79	-	1	-	101	1.4	-	
44AX48	44	9	107	-	-	2	C	3	-	CRP 0		Creamware	2	-	1762 1820	-	-	79	-	1	-	-	1.4	-	
44AX48	44	10	107	-	-	2	C	3	-	CRP 0		Creamware	1	-	1762 1820	-	-	78	-	6	-	-	1.4	-	
44AX48	44	11	107	-	-	2	C	3	-	CRP 30		Creamware - Overglaze Handpainted - Monochrome	1	-	1765 1810	-	239	79	-	2	-	62	1.4	-	
44AX48	44	12	107	-	-	2	C	3	-	CRK 0		Miscellaneous Refined Earthenwares	1	-	-	-	-	78	-	1	-	-	1.4	burned	
44AX48	44	13	107	-	-	2	C	3	-	CRK 0		Miscellaneous Refined Earthenwares	1	-	-	-	2	79	-	1	-	50	1.4	burned	
44AX48	44	14	107	-	-	2	C	3	-	CER 1		Redware - Unglazed	4	-	-	-	-	520	-	1	-	-	18.111	-	
44AX48	44	15	107	-	-	2	C	3	-	CER 62		Redware - Brown Glaze	1	-	-	-	750	357	-	2	-	62	1.7	-	
44AX48	44	16	107	-	-	2	C	3	-	CEH 98		Buff/White Bodied Earthenware - Other	1	-	-	-	752	357	-	1	-	62	1.7	brown glaze	
44AX48	44	17	107	-	-	2	C	3	-	GBU 4		Unidentified Bottle/Jar-Body	3	-	-	-	-	-	-	-	-	17	0.2	-	
44AX48	44	18	107	-	-	2	C	3	-	GBU 4		Unidentified Bottle/Jar-Body	1	-	-	-	-	-	-	-	-	5	0.2	-	
44AX48	44	19	107	-	-	2	C	3	-	GBU 4		Unidentified Bottle/Jar-Body	10	-	-	-	-	-	-	-	-	9	0.2	-	
44AX48	44	20	107	-	-	2	C	3	-	GOU 3		Unidentified Table or Lighting Glass	6	-	-	-	-	-	-	-	-	1	0.0	-	
44AX48	44	21	107	-	-	2	C	3	-	SAG 11		Broad Glass	28	11.3	1926	-	320	-	2	-	-	11	2.11	-	
44AX48	44	22	107	-	-	2	C	3	-	SBC 6		U.S. Nickel	1	-	1867	-	610	-	522	1	-	-	14.40	-	
44AX48	44	23	107	-	-	2	C	3	-	SAF 74		Machine Cut Nail - Unknown Head	1	-	1790	-	624	-	414	1	-	-	2.12	-	
44AX48	44	24	107	-	-	2	C	3	-	SAF 74		Machine Cut Nail - Unknown Head	21	-	1790	-	624	-	-	2	-	-	2.12	-	
44AX48	44	25	107	-	-	2	C	3	-	SOS 1		Unidentified Metal	6	23.8	-	-	624	-	-	2	-	-	0.0	-	
44AX48	44	26	107	-	-	2	C	3	-	PTE 98		Pipe Bowl - Unidentified Shape	9	-	-	-	-	-	-	-	1	-	1	7.51	-
44AX48	44	27	107	-	-	2	C	3	-	PTE 95		Pipe Bowl - Unidentified Shape Marked/Decorated Bowl	1	-	-	-	1600	-	-	-	1	-	1	7.51	embossed "[D]"
44AX48	44	28	107	-	-	2	C	3	-	ZAZ 1		Unidentified Bone	2	0.5	-	-	-	999	2	4	-	-	11.127	-	
44AX48	44	29	107	-	-	2	C	3	-	SMH 41		Rivet	1	-	-	-	610	-	-	1	-	-	19.115	-	
44AX48	45	1	108	-	-	2	C	4	-	CER 1		Redware - Unglazed	1	-	-	-	-	520	-	2	-	-	18.111	-	
44AX48	45	2	108	-	-	2	C	4	-	CER 62		Redware - Brown Glaze	1	-	-	-	752	357	-	1	-	62	1.7	-	
44AX48	45	3	108	-	-	2	C	4	-	CRW 0		Whiteware	4	-	1820	-	-	79	-	1	-	-	1.4	-	
44AX48	45	4	108	-	-	2	C	4	-	CRP 0		Creamware	3	-	1762 1820	-	-	79	-	1	-	-	1.4	-	
44AX48	45	5	108	-	-	2	C	4	-	CRP 0		Creamware	1	-	1762 1820	-	-	79	-	2	-	-	1.4	-	
44AX48	45	6	108	-	-	2	C	4	-	CRP 0		Pearlware	11	-	1775 1840	-	-	79	-	1	-	-	1.4	-	
44AX48	45	7	108	-	-	2	C	4	-	CRP 25		Pearlware - Embossed Body	1	-	1775 1840	-	1020	79	-	1	-	-	1.4	-	
44AX48	45	8	108	-	-	2	C	4	-	CRP 50		Pearlware - Transfer Printed - Blue, with Stipple	2	-	1800 1840	-	2	79	-	1	-	50	1.4	burned	
44AX48	45	9	108	-	-	2	C	4	-	CRP 50		Pearlware - Transfer Printed - Blue, with Stipple	2	-	1800 1840	-	140	98	-	5	-	50	1.117	refit; both surfaces decorated	
44AX48	45	10	108	-	-	2	C	4	-	CRP 70		Pearlware - Sponged	1	-	1820 1840	-	-	79	-	1	-	50	1.4	-	
44AX48	45	11	108	-	-	2	C	4	-	CRW 80		Whiteware - Decal - Overglaze	1	-	1880	-	102	79	-	1	-	97	1.4	-	
44AX48	45	12	108	-	-	2	C	4	-	GBU 4		Unidentified Bottle/Jar-Body	5	-	-	-	-	-	-	-	-	9	0.2	-	

Site	Cat	Spec	Fld	Tr	STP	Unit	Str	Lev	Fea	Type	Translation	V1	V3	V4	V5	V6	V7	V8	V9	Ptn	Note
										Style		Beg-End									
												Date									
44AX48	45	13	108	-	-	2	C	4	-	GBU 4	Unidentified Bottle/Jar-Body	-	-	-	-	-	-	-	17	0.2	-
44AX48	45	14	108	-	-	2	C	4	-	GBA 1	Wine Bottle	-	-	-	-	-	-	-	5	1.2	-
44AX48	45	15	108	-	-	2	C	4	-	SAG 11	Broad Glass	320	320	-	2	-	-	-	11	2.11	-
44AX48	45	16	108	-	-	2	C	4	-	SOS 1	Unidentified Metal	624	624	-	2	-	-	-	-	0.0	-
44AX48	45	17	108	-	-	2	C	4	-	PTE 98	Pipe Bowl - Unidentified Shape Bowl	-	-	-	-	1	-	-	1	7.51	-
44AX48	45	18	108	-	-	2	C	4	-	ZAZ 1	Unidentified Bone	-	-	-	999	2	4	-	-	11.127	-
44AX48	46	1	109	-	-	2	C	5	-	CRP 0	Pearlware	1775	1840	-	79	1	-	-	-	1.4	-
44AX48	46	2	109	-	-	2	C	5	-	CER 62	Redware - Brown Glaze	-	-	750	357	1	-	-	62	1.7	-
44AX48	46	3	109	-	-	2	C	5	-	GBU 4	Unidentified Bottle/Jar-Body	-	-	-	-	-	-	-	9	0.2	-
44AX48	46	4	109	-	-	2	C	5	-	SAG 11	Broad Glass	320	320	-	2	-	-	-	11	2.11	-
44AX48	46	5	109	-	-	2	C	5	-	ZMZ 5	Large Mammal	-	-	-	999	2	-	-	-	11.127	-
44AX48	47	1	115	-	-	2	D	6	-	CRP 0	Creamware	1762	1820	-	79	1	-	-	-	1.4	-
44AX48	47	2	115	-	-	2	D	6	-	CRP 0	Pearlware	1775	1840	-	79	3	-	-	-	1.4	-
44AX48	47	3	115	-	-	2	D	6	-	GBU 4	Unidentified Bottle/Jar-Body	-	-	-	-	-	-	-	17	0.2	-
44AX48	47	4	115	-	-	2	D	6	-	SAG 11	Broad Glass	320	320	-	2	-	-	-	11	2.11	-
44AX48	47	5	115	-	-	2	D	6	-	SAF 7	Unidentified Nail	624	624	-	414	2	-	-	-	2.12	-
44AX48	48	1	111	1	-	3	C	3	-	CRP 0	Creamware	1762	1820	-	79	1	-	-	-	1.4	-
44AX48	48	2	111	1	-	3	C	3	-	CRW 0	Whiteware	1820	-	-	79	1	-	-	-	1.4	-
44AX48	48	3	111	1	-	3	C	3	-	CRW 0	Whiteware	1820	-	-	79	2	-	-	-	1.4	-
44AX48	48	4	111	1	-	3	C	3	-	CRW 50	Whiteware - Transfer Printed - Blue	1820	1915	-	226	79	1	-	50	1.4	-
44AX48	48	5	111	1	-	3	C	3	-	CRW 50	Whiteware - Transfer Printed - Blue	1820	1915	-	2	79	1	-	50	1.4	-
44AX48	48	6	111	1	-	3	C	3	-	CRW 35	Whiteware - Underglaze Handpainted	1820	-	-	239	79	1	-	50	1.4	-
44AX48	48	7	111	1	-	3	C	3	-	CRW 60	Whiteware - Dipped - General	1820	1900	-	553	78	1	-	6	1.4	-
44AX48	48	8	111	1	-	3	C	3	-	CRW 60	Whiteware - Dipped - General	1820	1900	-	2	79	1	-	73	1.4	-
44AX48	48	9	111	1	-	3	C	3	-	CRW 0	Whiteware	1820	-	-	904	3	-	-	-	1.4	-
44AX48	48	10	111	1	-	3	C	3	-	CRP 35	Pearlware - Underglaze Handpainted - Blue	1775	1820	-	2	79	1	-	50	1.4	-
44AX48	48	11	111	1	-	3	C	3	-	CRP 38	Pearlware - Underglaze Handpainted - Other	1775	1820	-	102	79	1	-	40	1.4	-
44AX48	48	12	111	1	-	3	C	3	-	CPJ 0	Hard Paste Porcelain	-	-	-	79	1	-	-	-	1.4	-
44AX48	48	13	111	1	-	3	C	3	-	CPP 10	Oriental Porcelain - Underglaze Blue - Miscellaneous Undated	-	-	-	2	79	1	-	50	1.4	-
44AX48	48	14	111	1	-	3	C	3	-	CPP 10	Oriental Porcelain - Underglaze Blue - Miscellaneous Undated	-	-	2	77	2	-	-	50	1.4	-
44AX48	48	15	111	1	-	3	C	3	-	GBU 4	Unidentified Bottle/Jar-Body	-	-	-	-	-	-	1	0.2	-	-
44AX48	48	16	111	1	-	3	C	3	-	GBU 4	Unidentified Bottle/Jar-Body	-	-	-	-	-	-	9	0.2	-	-
44AX48	48	17	111	1	-	3	C	3	-	GBU 4	Unidentified Bottle/Jar-Body	-	-	92	-	-	-	9	0.2	-	unidentified embossed lettering
44AX48	48	18	111	1	-	3	C	3	-	GBA 1	Wine Bottle	-	-	-	-	-	-	5	1.2	-	-
44AX48	48	19	111	1	-	3	C	3	-	GBU 4	Unidentified Bottle/Jar-Body	-	-	-	-	-	-	5	0.2	-	-
44AX48	48	20	111	1	-	3	C	3	-	GTU 1	Unidentified Tableware/General	-	-	1	-	-	-	1	1.4	-	-

Site	Cat	Spec	Fld	Tr	STP	Unit	Str	Lev	Fea	Type	Style	Translation	Cnt	Wght	Beg-End Date	V1	V3	V4	V5	V6	V7	V8	V9	Ptn	Note
44AX48	48	21	111	1	-	3	C	3	-	GOU 3		Unidentified Table or Lighting Glass	1	-	-	-	-	-	-	-	-	-	1	0.0	-
44AX48	48	22	111	1	-	3	C	3	-	SAG 11		Broad Glass	27	7.5	1926	320	-	-	-	2	-	-	11	2.11	-
44AX48	48	23	111	1	-	3	C	3	-	SHB 1		Coal	1	0.4	-	520	-	-	-	2	-	-	-	8.63	-
44AX48	48	24	111	1	-	3	C	3	-	SAF 7		Unidentified Nail	13	-	-	624	-	-	-	2	-	-	-	2.12	-
44AX48	48	25	111	1	-	3	C	3	-	ZMZ 1		Unidentified Mammal	2	1.6	-	-	-	-	999	2	-	-	-	11.127	-
44AX48	48	26	111	1	-	3	C	3	-	ZMD 60		Pig	1	0.6	-	-	-	-	13	2	-	-	-	11.125	-
44AX48	48	27	111	1	-	3	C	3	-	ZXZ 1		Unidentified Shell	2	0.6	-	-	-	-	700	2	-	-	-	11.127	-
44AX48	48	28	111	1	-	3	C	3	-	LBF 4		Late-Stage Biface	1	3.0	-	531	-	-	-	2	1	-	1	9.90	-
44AX48	49	1	112	1	-	3	D	4	-	OPP 10		Oriental Porcelain - Underglaze Blue - Miscellaneous Undated	1	-	-	-	-	2	77	-	1	-	50	1.4	-
44AX48	49	2	112	1	-	3	D	4	-	CRP 0		Pearlware	2	-	1775 1840	-	-	79	-	1	-	-	1.4	-	
44AX48	49	3	112	1	-	3	D	4	-	CSL 11		Stoneware - Gray Salt Glazed w/ Albany Type Slip	1	-	1800 1940	-	677	357	-	1	-	-	1.7	-	
44AX48	49	4	112	1	-	3	D	4	-	GBU 4		Unidentified Bottle/Jar-Body	1	-	-	-	-	-	-	-	-	-	5	0.2	-
44AX48	49	5	112	1	-	3	D	4	-	GBU 4		Unidentified Bottle/Jar-Body	1	-	-	-	1	-	-	-	-	-	9	0.2	-
44AX48	49	6	112	1	-	3	D	4	-	GOU 3		Unidentified Table or Lighting Glass	2	-	-	-	-	-	-	-	-	-	1	0.0	-
44AX48	49	7	112	1	-	3	D	4	-	SAG 11		Broad Glass	3	1.0	1926	320	-	-	2	-	-	-	11	2.11	-
44AX48	49	8	112	1	-	3	D	4	-	SAF 74		Machine Cut Nail - Unknown Head	3	-	1790	-	624	414	2	-	-	-	-	2.12	-
44AX48	49	9	112	1	-	3	D	4	-	-			1	0.8	-	531	-	-	-	-	1	-	1	-	-
44AX48	50	1	113	1	-	3	E	5	-	CRW 0		Whiteware	3	-	1820	-	-	79	-	1	-	-	-	1.4	-
44AX48	50	2	113	1	-	3	E	5	-	CRP 0		Pearlware	4	-	1775 1840	-	-	79	-	1	-	-	-	1.4	-
44AX48	50	3	113	1	-	3	E	5	-	CRW 0		Creamware	3	-	1762 1820	-	-	79	-	1	-	-	-	1.4	-
44AX48	50	4	113	1	-	3	E	5	-	CRW 0		Creamware	1	-	1762 1820	-	-	79	-	2	-	-	-	1.4	-
44AX48	50	5	113	1	-	3	E	5	-	CER 64		Redware - Olive Glaze	1	-	-	-	752	357	-	1	-	-	39	1.7	-
44AX48	50	6	113	1	-	3	E	5	-	GTU 1		Unidentified Tableware/General	1	-	-	-	98	-	-	-	-	-	1	1.4	-
44AX48	50	7	113	1	-	3	E	5	-	GOU 2		Unidentified Curved/Vessel Glass/Melted	3	-	-	-	-	-	-	-	-	-	1	0.0	melted
44AX48	50	8	113	1	-	3	E	5	-	SAG 11		Broad Glass	5	2.0	1926	320	-	-	2	-	-	-	11	2.11	-
44AX48	50	9	113	1	-	3	E	5	-	SAF 74		Machine Cut Nail - Unknown Head	5	-	1790	-	624	414	2	-	-	-	-	2.12	-
44AX48	51	1	114	1	-	4	C	3	-	CRW 0		Creamware	3	-	1762 1820	-	-	79	-	1	-	-	-	1.4	-
44AX48	51	2	114	1	-	4	C	3	-	CRP 0		Pearlware	1	-	1775 1840	-	-	79	-	3	-	-	-	1.4	-
44AX48	51	3	114	1	-	4	C	3	-	CRW 0		Whiteware	8	-	1820	-	-	79	-	1	-	-	-	1.4	-
44AX48	51	4	114	1	-	4	C	3	-	CRW 0		Whiteware	1	-	1820	-	-	77	-	2	-	-	-	1.4	-
44AX48	51	5	114	1	-	4	C	3	-	CRW 0		Whiteware	1	-	1820	-	-	79	-	2	-	-	-	1.4	-
44AX48	51	6	114	1	-	4	C	3	-	CRD 10		Delftware - White Glaze	2	-	1640 1800	-	-	79	-	1	-	-	-	1.4	-
44AX48	51	7	114	1	-	4	C	3	-	OPP 10		Oriental Porcelain - Underglaze Blue - Miscellaneous Undated	1	-	-	-	2	79	-	1	-	-	50	1.4	-
44AX48	51	8	114	1	-	4	C	3	-	CRK 0		Miscellaneous Refined Earthenwares	2	-	-	-	-	79	-	1	-	-	-	1.4	burned
44AX48	51	9	114	1	-	4	C	3	-	CRK 0		Miscellaneous Refined Earthenwares	1	-	-	-	-	79	-	2	-	-	-	1.4	burned
44AX48	51	10	114	1	-	4	C	3	-	CER 62		Redware - Brown Glaze	2	-	-	-	753	357	-	1	-	-	62	1.7	-

Site	Cat	Spec	Fld	Tr	STP	Unit	Str	Lev	Fea	Type	Style	Translation	V1	V3	V4	V5	V6	V7	V8	V9	Ptn	Note
44AX48	51	11	114	1	-	4	C	3	-	CSB 11		Stoneware - Brown Salt Glazed w/ Albany Type Slip	-	-	677	357	-	1	-	-	1.7	-
44AX48	51	12	114	1	-	4	C	3	-	CSL 98		Stoneware - Gray Body - Other	-	-	2	357	-	1	-	50	1.7	burned
44AX48	51	13	114	1	-	4	C	3	-	GBU 4		Unidentified Bottle/Jar-Body	-	-	-	-	-	-	-	5	0.2	-
44AX48	51	14	114	1	-	4	C	3	-	GBU 4		Unidentified Bottle/Jar-Body	-	-	-	-	-	-	-	9	0.2	-
44AX48	51	15	114	1	-	4	C	3	-	GBU 4		Unidentified Bottle/Jar-Body	-	-	92	-	-	-	-	9	0.2	unidentified embossed lettering
44AX48	51	16	114	1	-	4	C	3	-	SAG 11		Broad Glass	-	320	-	-	2	-	-	10	2.11	-
44AX48	51	17	114	1	-	4	C	3	-	SAG 11		Broad Glass	-	320	-	-	2	-	-	11	2.11	-
44AX48	51	18	114	1	-	4	C	3	-	SOS 2		Unidentified Glass	-	320	-	-	2	-	-	26	0.0	-
44AX48	51	19	114	1	-	4	C	3	-	SAF 5		Machine Cut/Wrought Nail	-	624	-	414	2	-	-	-	2.12	-
44AX48	51	20	114	1	-	4	C	3	-	LDB 9		Flake Fragment	-	531	-	-	-	1	-	1	9.90	-
44AX48	52	1	116	1	-	5	B	2	-	CRC 0		Creamware	-	-	-	79	-	1	-	-	1.4	-
44AX48	52	2	116	1	-	5	B	2	-	CRP 0		Pearlware	-	-	79	-	1	-	-	1.4	-	
44AX48	52	3	116	1	-	5	B	2	-	CRP 35		Pearlware - Underglaze Handpainted - Blue	-	-	2	79	-	1	-	50	1.4	-
44AX48	52	4	116	1	-	5	B	2	-	CRW 80		Whiteware - Decal - Overglaze	-	-	102	77	-	1	-	97	1.4	-
44AX48	52	5	116	1	-	5	B	2	-	CRW 0		Whiteware	-	-	-	78	-	1	-	-	1.4	-
44AX48	52	6	116	1	-	5	B	2	-	CRY 0		Yellowware	-	-	-	79	-	1	-	-	1.4	-
44AX48	52	7	116	1	-	5	B	2	-	CEH 0		Buff/White Bodied Earthenware	-	-	-	79	-	1	-	-	1.4	-
44AX48	52	8	116	1	-	5	B	2	-	GOU 1		Unidentified Curved/Vessel Glass	-	-	-	-	-	-	-	1	0.0	-
44AX48	52	9	116	1	-	5	B	2	-	GBA 1		Wine Bottle	-	-	-	-	-	1	-	5	1.2	-
44AX48	52	10	116	1	-	5	B	2	-	SAG 11		Broad Glass	-	320	-	-	2	-	-	11	2.11	-
44AX48	52	11	116	1	-	5	B	2	-	SAF 5		Machine Cut/Wrought Nail	-	624	-	-	2	-	-	-	2.12	-
44AX48	53	1	117	1	-	5	C	3	-	CER 61		Redware - Dark Brown Glaze	-	-	752	357	-	1	-	61	1.7	-
44AX48	53	2	117	1	-	5	C	3	-	CRC 0		Creamware	-	-	-	-	-	-	-	-	1.4	-
44AX48	53	3	117	1	-	5	C	3	-	CRP 35		Pearlware - Underglaze Handpainted - Blue	-	-	239	78	-	5	-	50	1.4	-
44AX48	53	4	117	1	-	5	C	3	-	CRP 35		Pearlware - Underglaze Handpainted - Blue	-	-	2	79	-	1	-	50	1.4	-
44AX48	53	5	117	1	-	5	C	3	-	CPJ 0		Hard Paste Porcelain	-	-	-	79	-	1	-	-	1.4	-
44AX48	53	6	117	1	-	5	C	3	-	GBU 4		Unidentified Bottle/Jar-Body	-	-	-	-	-	-	-	5	0.2	-
44AX48	53	7	117	1	-	5	C	3	-	GBU 4		Unidentified Bottle/Jar-Body	-	-	-	-	-	-	-	9	0.2	-
44AX48	53	8	117	1	-	5	C	3	-	SAG 11		Broad Glass	-	320	-	-	2	-	-	11	2.11	-
44AX48	54	1	118	1	-	6	C	3	-	CRC 0		Creamware	-	-	79	-	1	-	-	-	1.4	-
44AX48	54	2	118	1	-	6	C	3	-	CRP 0		Pearlware	-	-	79	-	1	-	-	-	1.4	-
44AX48	54	3	118	1	-	6	C	3	-	CRP 10		Pearlware - Shell Edge - Blue	-	-	993	79	-	2	-	50	1.4	-
44AX48	54	4	118	1	-	6	C	3	-	CER 61		Redware - Dark Brown Glaze	-	-	750	357	-	2	-	61	1.7	-
44AX48	54	5	118	1	-	6	C	3	-	SAG 11		Broad Glass	-	320	-	-	2	-	-	11	2.11	-
44AX48	54	6	118	1	-	6	C	3	-	SAF 5		Machine Cut/Wrought Nail	-	624	-	-	2	-	-	-	2.12	-
44AX48	55	1	119	1	-	7	B	2	-	CRP 0		Pearlware	-	-	-	79	-	1	-	-	1.4	-

Site	Cat	Spec	Fld	Tr	STP	Unit	Str	Lev	Fea	Type	Style	Translation	V1	V3	V4	V5	V6	V7	V8	V9	Ptn	Note	
													Cnt	Wght	Beg-End Date								
44AX48	55	2	119	1	-	7	B	2	-	GBU 4		Unidentified Bottle/Jar-Body	-	-	-	-	-	-	-	5	0.2	-	
44AX48	55	3	119	1	-	7	B	2	-	GBU 4		Unidentified Bottle/Jar-Body	-	-	92	-	-	-	-	3	0.2	embossed "...NO..."	
44AX48	55	4	119	1	-	7	B	2	-	GTX 2		Finial	-	-	-	-	-	-	-	1	1.10	plain rectangular finial	
44AX48	55	5	119	1	-	7	B	2	-	SAG 11		Broad Glass	-	320	-	2	-	-	11	2.11	-		
44AX48	55	6	119	1	-	7	B	2	-	SAF 5		Machine Cut/Wrought Nail	-	624	-	2	-	-	-	2.12	-		
44AX48	55	7	119	1	-	7	B	2	-	PTS 1		Pipe Stem - Measurable	-	-	-	-	3	-	6	7.51	-		
44AX48	56	1	120	1	-	7	C	3	-	CRG 0		Creamware	-	-	-	50	-	1	-	1.4	-		
44AX48	56	2	120	1	-	7	C	3	-	CRG 0		Creamware	-	-	-	79	-	1	-	1.4	-		
44AX48	56	3	120	1	-	7	C	3	-	CRP 0		Pearlware	-	-	-	79	-	1	-	1.4	-		
44AX48	56	4	120	1	-	7	C	3	-	GBU 4		Unidentified Bottle/Jar-Body	-	-	1	-	-	-	1	0.2	-		
44AX48	56	5	120	1	-	7	C	3	-	GOU 3		Unidentified Table or Lighting Glass	-	-	-	-	-	-	1	0.0	-		
44AX48	56	6	120	1	-	7	C	3	-	SAG 11		Broad Glass	-	320	-	2	-	-	11	2.11	-		
44AX48	56	7	120	1	-	7	C	3	-	SAF 5		Machine Cut/Wrought Nail	-	624	-	414	2	-	-	2.12	-		
44AX48	57	1	121	1	-	8	B	2	-	CRW 20		Whiteware - Other Embossed Rims	-	1020	215	2	-	-	-	1.116	-		
44AX48	57	2	121	1	-	8	B	2	-	CER 1		Redware - Unglazed	-	-	520	-	1	-	-	18.111	-		
44AX48	58	1	122	1	-	9	B	2	-	CRW 50		Whiteware - Transfer Printed - Blue	-	-	2	79	-	1	-	1.4	-		
44AX48	58	2	122	1	-	9	B	2	-	CRW 50		Whiteware - Transfer Printed - Blue	-	-	2	98	-	2	-	1.117	both surfaces decorated		
44AX48	58	3	122	1	-	9	B	2	-	CER 61		Redware - Dark Brown Glaze	-	-	752	357	-	1	-	1.7	-		
44AX48	58	4	122	1	-	9	B	2	-	GBU 4		Unidentified Bottle/Jar-Body	-	-	-	-	-	-	3	0.2	-		
44AX48	58	5	122	1	-	9	B	2	-	SAG 11		Broad Glass	-	320	-	2	-	-	11	2.11	-		
44AX48	59	1	123	1	-	10	B	2	-	CRP 0		Pearlware	-	-	-	79	-	1	-	1.4	-		
44AX48	59	2	123	1	-	10	B	2	-	CSB 0		Stoneware - Brown Salt Glazed	-	-	-	357	-	1	-	1.7	-		
44AX48	59	3	123	1	-	10	B	2	-	SAG 11		Broad Glass	-	320	-	2	-	-	11	2.11	-		
44AX48	59	4	123	1	-	10	B	2	-	SAF 5		Machine Cut/Wrought Nail	-	624	-	2	-	-	-	2.12	-		
44AX48	59	5	123	1	-	10	B	2	-	SRM 7		Marble (Stone) Marble	-	1296	-	1	-	-	-	13.59	-		
44AX48	60	1	124	1	-	10	C	3	-	CRG 0		Creamware	-	-	-	79	-	1	-	1.4	-		
44AX48	60	2	124	1	-	10	C	3	-	CRP 0		Pearlware	-	-	-	79	-	1	-	1.4	-		
44AX48	60	3	124	1	-	10	C	3	-	CRP 10		Pearlware - Shell Edge - Blue	-	-	987	50	-	2	-	1.4	-		
44AX48	60	4	124	1	-	10	C	3	-	CRP 35		Pearlware - Underglaze Handpainted - Blue	-	-	101	79	-	2	-	1.4	-		
44AX48	60	5	124	1	-	10	C	3	-	GBU 4		Unidentified Bottle/Jar-Body	-	-	-	-	-	-	5	0.2	-		
44AX48	60	6	124	1	-	10	C	3	-	GOU 1		Unidentified Curved/Vessel Glass	-	-	-	-	-	-	1	0.0	-		
44AX48	60	7	124	1	-	10	C	3	-	SAG 11		Broad Glass	-	320	-	2	-	-	11	2.11	-		
44AX48	60	8	124	1	-	10	C	3	-	SAF 5		Machine Cut/Wrought Nail	-	624	-	414	2	-	-	2.12	-		
44AX48	61	1	125	1	-	11	B	2	-	CRG 0		Creamware	-	-	-	79	-	1	-	1.4	-		
44AX48	61	2	125	1	-	11	B	2	-	CRP 0		Pearlware	-	-	77	-	1	-	-	1.4	-		
44AX48	61	3	125	1	-	11	B	2	-	CRP 0		Pearlware	-	-	79	-	1	-	-	1.4	-		
44AX48	61	4	125	1	-	11	B	2	-	CRP 35		Pearlware - Underglaze Handpainted - Blue	-	-	2	79	-	1	-	1.4	-		

Site	Cat	Spec	Fld	Tr	STP	Unit	Str	Lev	Fea	Type	Style	Translation	Cnt	Wght	Beg-End Date	V1	V3	V4	V5	V6	V7	V8	V9	Ptn	Note
44AX48	61	5	125	1	-	11	B	2	-	CRP	36	Pearlware - Underglaze Handpainted - Polychrome	1	-	1795 1825	-	-	110	79	-	1	-	30	1.4	-
44AX48	61	6	125	1	-	11	B	2	-	CRW	0	White ware	1	-	1820	-	-	-	79	-	1	-	-	1.4	-
44AX48	61	7	125	1	-	11	B	2	-	CRW	50	White ware - Transfer Printed - Blue	1	-	1820 1915	-	2	79	-	1	-	50	1.4	-	both surfaces decorated
44AX48	61	8	125	1	-	11	B	2	-	CER	62	Red ware - Brown Glaze	1	-	-	-	752	357	-	1	-	62	1.7	-	
44AX48	61	9	125	1	-	11	B	2	-	CES	0	Red Bodied Slipware	1	-	1670 1850	-	750	77	-	1	-	-	1.4	-	
44AX48	61	10	125	1	-	11	B	2	-	CES	0	Red Bodied Slipware	1	-	1670 1850	-	750	77	-	2	-	-	1.4	-	
44AX48	61	11	125	1	-	11	B	2	-	GBU	4	Unidentified Bottle/Jar-Body	1	-	-	-	-	-	-	-	-	5	0.2	-	
44AX48	61	12	125	1	-	11	B	2	-	GOU	3	Unidentified Table or Lighting Glass	1	-	-	-	-	-	-	-	-	1	0.0	-	
44AX48	61	13	125	1	-	11	B	2	-	SAF	14	Handwrought Spike	1	-	1830	-	624	-	-	1	-	-	2.12	-	
44AX48	62	1	126	1	-	11	C	3	-	GBA	1	Wine Bottle	1	-	-	-	-	-	-	-	-	5	1.2	-	
44AX48	62	2	126	1	-	11	C	3	-	SBC	30	Colonial Coin	1	-	1788 1788	-	609	-	-	1	-	-	14.40	-	Connecticut copper coin; on obverse bust of man; on reverse "INDE" "ET" "LIB" over representation of seated Britannia (Krause and Mishler 2002:1209)
44AX48	63	1	128	1	-	12	C	3	-	CRP	0	Pearlware	15	-	1775 1840	-	-	-	50	-	6	-	-	1.4	-
44AX48	63	2	128	1	-	12	C	3	-	CRP	0	Pearlware	1	-	1775 1840	-	-	-	79	-	2	-	-	1.4	-
44AX48	63	3	128	1	-	12	C	3	-	CRP	0	Pearlware	1	-	1775 1840	-	-	-	79	-	45	-	-	1.4	-
44AX48	63	4	128	1	-	12	C	3	-	CRP	10	Pearlware - Shell Edge - Blue	1	-	1800 1840	-	987	77	-	2	-	50	1.4	-	
44AX48	63	5	128	1	-	12	C	3	-	CRP	37	Pearlware - Underglaze Handpainted - Brown	1	-	1795 1820	-	102	79	-	1	-	62	1.4	-	
44AX48	63	6	128	1	-	12	C	3	-	CRP	38	Pearlware - Underglaze Handpainted - Other	1	-	1775 1820	-	102	79	-	1	-	40	1.4	-	
44AX48	63	7	128	1	-	12	C	3	-	CRW	0	White ware	1	-	1820	-	-	79	-	1	-	-	1.4	-	
44AX48	63	8	128	1	-	12	C	3	-	CRW	5	White ware - Plain Paneled	1	-	1830 1870	-	970	78	-	1	-	-	1.4	-	
44AX48	63	9	128	1	-	12	C	3	-	CER	1	Red ware - Unglazed	1	-	-	-	-	-	520	-	1	-	18.111	-	
44AX48	63	10	128	1	-	12	C	3	-	CES	0	Red Bodied Slipware	1	-	1670 1850	-	750	77	-	-	1	-	1.4	-	
44AX48	63	11	128	1	-	12	C	3	-	GBA	1	Wine Bottle	5	-	-	-	-	-	-	-	-	5	1.2	-	
44AX48	63	12	128	1	-	12	C	3	-	GOU	3	Unidentified Table or Lighting Glass	2	-	-	-	-	-	-	-	-	1	0.0	-	
44AX48	63	13	128	1	-	12	C	3	-	SAG	11	Broad Glass	4	1.5	1926	-	320	-	-	2	-	11	2.11	-	
44AX48	63	14	128	1	-	12	C	3	-	PTS	1	Pipe Stem - Measurable	1	-	-	-	-	-	-	-	3	-	5	7.51	-
44AX48	64	1	129	1	-	13	C	3	-	CRW	0	White ware	4	-	1820	-	-	-	79	-	1	-	-	1.4	-
44AX48	64	2	129	1	-	13	C	3	-	CRP	35	Pearlware - Underglaze Handpainted - Blue	1	-	1775 1820	-	101	79	-	2	-	50	1.4	-	
44AX48	64	3	129	1	-	13	C	3	-	CRC	0	Creamware	1	-	1762 1820	-	-	-	79	-	1	-	-	1.4	-
44AX48	64	4	129	1	-	13	C	3	-	GBA	1	Wine Bottle	1	-	-	-	-	-	-	-	-	5	1.2	-	
44AX48	64	5	129	1	-	13	C	3	-	SAG	11	Broad Glass	1	0.5	1926	-	320	-	-	2	-	11	2.11	-	
44AX48	65	1	130	1	-	14	C	3	-	CRP	0	Pearlware	1	-	1775 1840	-	-	-	79	-	1	-	-	1.4	-
44AX48	65	2	130	1	-	14	C	3	-	CRW	0	White ware	1	-	1820	-	-	-	79	-	1	-	-	1.4	-
44AX48	65	3	130	1	-	14	C	3	-	SAG	11	Broad Glass	2	1.4	1926	-	320	-	-	2	-	11	2.11	-	
44AX48	65	4	130	1	-	14	C	3	-	SAF	5	Machine Cut/Wrought Nail	1	-	-	-	624	-	-	2	-	-	2.12	-	

Site	Cat	Spec	Fld	Tr	STP	Unit	Str	Lev	Fea	Type	Style	Translation	V1	V3	V4	V5	V6	V7	V8	V9	Ptn	Note
44AX48	66	1	131	-	-	15	A	1	-	CRW 0		Whiteware	-	-	-	79	-	1	-	-	1.4	-
44AX48	66	2	131	-	-	15	A	1	-	GBU 4		Unidentified Bottle/Jar-Body	-	-	-	-	-	-	-	9	0.2	-
44AX48	66	3	131	-	-	15	A	1	-	GBU 4		Unidentified Bottle/Jar-Body	-	-	-	-	-	-	-	1	0.2	-
44AX48	66	4	131	-	-	15	A	1	-	GBU 4		Unidentified Bottle/Jar-Body	-	-	-	99	-	-	-	1	0.2	-
44AX48	66	5	131	-	-	15	A	1	-	GBU 4		Unidentified Bottle/Jar-Body	-	-	-	-	-	-	-	17	0.2	-
44AX48	66	6	131	-	-	15	A	1	-	SAF 6		Wire Nail	-	624	-	414	2	-	-	-	2.12	-
44AX48	66	7	131	-	-	15	A	1	-	SAF 6		Wire Nail	-	624	-	-	1	-	-	-	2.12	with hard rubber head
44AX48	66	8	131	-	-	15	A	1	-	SAF 9		Roofing Nail	-	624	-	411	1	-	-	-	2.12	-
44AX48	66	9	131	-	-	15	A	1	-	SAG 11		Broad Glass	-	320	-	-	2	-	-	11	2.11	-
44AX48	66	10	131	-	-	15	A	1	-	SAP 1		Salt-Glazed Stoneware Drain Pipe	-	220	-	586	2	-	-	-	2.15	-
44AX48	66	11	131	-	-	15	A	1	-	ZAZ 1		Unidentified Bone	-	-	-	999	2	-	-	-	11.127	-
44AX48	67	1	133	2	-	16	A	1	-	CRW 0		Whiteware	-	-	-	357	-	1	-	-	1.7	refit
44AX48	67	2	133	2	-	16	A	1	-	GBU 4		Unidentified Bottle/Jar-Body	-	-	-	-	-	-	-	1	0.2	-
44AX48	67	3	133	2	-	16	A	1	-	GBU 4		Unidentified Bottle/Jar-Body	-	-	-	-	-	-	-	5	0.2	-
44AX48	67	4	133	2	-	16	A	1	-	SAG 11		Broad Glass	-	320	-	-	2	-	-	10	2.11	-
44AX48	67	5	133	2	-	16	A	1	-	SAG 11		Broad Glass	-	320	-	-	2	-	-	11	2.11	-
44AX48	67	6	133	2	-	16	A	1	-	SAF 9		Roofing Nail	-	624	-	411	2	-	-	-	2.12	-
44AX48	68	1	134	2	-	16	B	2	-	CRW 0		Whiteware	-	-	-	79	-	1	-	-	1.4	-
44AX48	68	2	134	2	-	16	B	2	-	CRW 35		Whiteware - Underglaze Handpainted	-	-	2	79	-	1	-	60	1.4	-
44AX48	68	3	134	2	-	16	B	2	-	CPJ 0		Hard Paste Porcelain	-	-	-	78	-	2	-	-	1.4	-
44AX48	68	4	134	2	-	16	B	2	-	GBU 4		Unidentified Bottle/Jar-Body	-	-	-	-	-	-	-	1	0.2	-
44AX48	68	5	134	2	-	16	B	2	-	GBU 4		Unidentified Bottle/Jar-Body	-	-	-	-	-	-	-	9	0.2	-
44AX48	68	6	134	2	-	16	B	2	-	SAG 11		Broad Glass	-	320	-	-	2	-	-	11	2.11	-
44AX48	68	7	134	2	-	16	B	2	-	SAF 7		Unidentified Nail	-	624	-	-	2	-	-	-	2.12	-
44AX48	69	1	135	2	-	16	C	3	-	CRW 0		Whiteware	-	-	-	79	-	1	-	-	1.4	-
44AX48	69	2	135	2	-	16	C	3	-	CRW 0		Whiteware	-	-	-	79	-	45	-	-	1.4	-
44AX48	69	3	135	2	-	16	C	3	-	CRW 50		Whiteware - Transfer Printed - Blue	-	-	102	109	-	9	-	50	1.117	refit
44AX48	69	4	135	2	-	16	C	3	-	CRP 0		Pearlware	-	-	-	79	-	1	-	-	1.4	-
44AX48	69	5	135	2	-	16	C	3	-	CRP 35		Pearlware - Underglaze Handpainted - Blue	-	-	2	79	-	3	-	50	1.4	-
44AX48	69	6	135	2	-	16	C	3	-	CFT 0		Stoneware - White Salt Glazed	-	-	-	78	-	1	-	-	1.4	-
44AX48	69	7	135	2	-	16	C	3	-	GBU 4		Unidentified Bottle/Jar-Body	-	-	-	-	-	-	-	1	0.2	-
44AX48	69	8	135	2	-	16	C	3	-	GOU 3		Unidentified Table or Lighting Glass	-	-	-	-	-	-	-	1	0.0	-
44AX48	69	9	135	2	-	16	C	3	-	SAG 11		Broad Glass	-	320	-	-	2	-	-	11	2.11	-
44AX48	69	10	135	2	-	16	C	3	-	SAF 7		Unidentified Nail	-	624	-	-	2	-	-	-	2.12	-
44AX48	70	1	212	2	-	16	D	4	-	FAP 1		Pine	-	-	-	50	2	10	-	-	12.131	-
44AX48	70	2	212	2	-	16	D	4	-	FTO 3		White Oak Group	-	-	-	50	2	10	-	-	12.131	-
44AX48	70	3	212	2	-	16	D	4	-	FTT 1		Deciduos Taxa	-	-	-	50	2	10	-	-	12.131	-

Site	Cat	Spec	Fld	Tr	STP	Unit	Str	Lev	Fea	Type	Style	Translation	Cnt	Wght	Beg-End Date	V1	V3	V4	V5	V6	V7	V8	V9	Ptn	Note	
44AX48	70	4	212	2	-	16	D	4	-	FZA 5		Charred Wood - Unidentifiable	5	-	-	-	2	-	50	2	10	-	-	12.131	-	
44AX48	71	1	137	-	-	17	B	2	-	CRW 0		Whiteware	5	1820	-	-	-	-	79	-	1	-	-	1.4	-	
44AX48	71	2	137	-	-	17	B	2	-	CSL 21		Stoneware - Gray Salt Glazed w/ Misc. Brown Slip	3	-	-	-	-	628	357	-	1	-	-	1.7	-	
44AX48	71	3	137	-	-	17	B	2	-	GBU 4		Unidentified Bottle/Jar-Body	1	-	-	-	-	-	-	-	-	1	-	0.2	-	
44AX48	71	4	137	-	-	17	B	2	-	SAG 11		Broad Glass	6	3.5	1926	-	320	-	-	2	-	11	2.11	-		
44AX48	71	5	137	-	-	17	B	2	-	SAF 7		Unidentified Nail	1	-	-	-	624	-	-	2	-	-	2.12	-		
44AX48	72	1	138	-	-	17	C	3	-	CRW 0		Whiteware	4	-	1820	-	-	-	79	-	1	-	-	1.4	-	
44AX48	72	2	138	-	-	17	C	3	-	CRW 50		Whiteware - Transfer Printed - Blue	1	1820	1915	904	-	140	77	-	3	-	50	1.4	-	
44AX48	72	3	138	-	-	17	C	3	-	CRP 0		Pearlware	1	-	1775	1840	-	-	79	-	1	-	-	1.4	-	
44AX48	72	4	138	-	-	17	C	3	-	CRP 10		Pearlware - Shell Edge - Blue	1	-	1800	1840	-	987	77	-	2	-	50	1.4	-	
44AX48	72	5	138	-	-	17	C	3	-	OPP 10		Oriental Porcelain - Underglaze Blue - Miscellaneous Undated	1	-	-	-	-	2	79	-	1	-	50	1.4	-	
44AX48	72	6	138	-	-	17	C	3	-	CER 61		Redware - Dark Brown Glaze	1	-	-	-	-	752	357	-	2	-	61	1.7	-	
44AX48	72	7	138	-	-	17	C	3	-	GBU 4		Unidentified Bottle/Jar-Body	1	-	-	-	-	-	-	-	-	3	0.2	-		
44AX48	72	8	138	-	-	17	C	3	-	GBU 4		Unidentified Bottle/Jar-Body	1	-	-	-	-	-	-	-	-	5	0.2	-		
44AX48	72	9	138	-	-	17	C	3	-	SAF 7		Unidentified Nail	1	-	-	-	624	-	-	2	-	-	2.12	-		
44AX48	72	10	138	-	-	17	C	3	-	SAG 11		Broad Glass	2	1.2	1926	-	320	-	-	2	-	11	2.11	-		
44AX48	73	1	139	-	-	17	D	4	-	CRY 61		Yellowware - Dipped - Mocha	11	-	1827	1940	905	-	557	226	-	9	-	11	1.116	refit: blue mocha on white band; with impressed cypher mark on base
44AX48	73	2	139	-	-	17	D	4	-	CRW 0		Whiteware	21	-	1820	-	-	-	79	-	1	-	-	1.4	-	
44AX48	73	3	139	-	-	17	D	4	-	CRW 50		Whiteware - Transfer Printed - Blue	1	-	1820	1915	-	2	50	-	1	-	50	1.4	-	
44AX48	73	4	139	-	-	17	D	4	-	CRW 50		Whiteware - Transfer Printed - Blue	1	-	1820	1915	-	201	77	-	1	-	50	1.4	-	
44AX48	73	5	139	-	-	17	D	4	-	SAG 11		Broad Glass	1	0.2	-	320	-	-	-	2	-	11	2.11	-		
44AX48	73	6	139	-	-	17	D	4	-	SAF 7		Unidentified Nail	1	-	-	-	624	-	-	2	-	-	2.12	-		
44AX48	73	7	139	-	-	17	D	4	-	ZMZ 1		Unidentified Mammal	1	1.1	-	-	-	-	999	2	4	-	-	11.127	-	
44AX48	73	8	139	-	-	17	D	4	-	ZMZ 1		Unidentified Mammal	1	0.3	-	-	-	-	999	2	-	-	-	11.127	-	
44AX48	73	9	139	-	-	17	D	4	-	CRW 0		Whiteware	3	-	1820	-	-	-	79	-	1	-	-	1.4	-	
44AX48	73	10	139	-	-	17	D	4	-	CRY 0		Yellowware	2	-	1827	1940	-	-	78	-	45	-	-	1.4	-	
44AX48	73	11	139	-	-	17	D	4	-	FZA 10		Wood Sub-sample - Not Analyzed	13	-	-	-	2	-	50	2	10	-	-	12.131	-	
44AX48	73	12	139	-	-	17	D	4	-	FTO 21		American Chestnut	2	-	-	-	2	-	50	2	10	-	-	12.131	-	
44AX48	73	13	139	-	-	17	D	4	-	FAP 1		Pine	2	-	-	-	2	-	50	2	10	-	-	12.131	-	
44AX48	73	14	139	-	-	17	D	4	-	FTO 3		White Oak Group	6	-	-	-	2	-	50	2	10	-	-	12.131	-	
44AX48	73	15	139	-	-	17	D	4	-	FTT 1		Deciduos Taxa	4	-	-	-	2	-	50	2	10	-	-	12.131	-	
44AX48	73	16	139	-	-	17	D	4	-	FZA 5		Charred Wood - Unidentifiable	6	-	-	-	2	-	50	2	10	-	-	12.131	-	
44AX48	73	17	139	-	-	17	D	4	-	FMG 13		Bread Wheat	1	-	-	-	1	-	2	1	10	-	-	12.130	-	
44AX48	73	18	139	-	-	17	D	4	-	FZA 6		Charred Seed - Unidentifiable	1	-	-	-	8	-	2	2	10	-	-	12.135	-	
44AX48	74	1	140	-	-	18	C	3	-	CER 1		Redware - Unglazed	3	-	-	-	-	-	520	-	1	-	-	18.111	-	

Site	Cat	Spec	Fld	Tr	STP	Unit	Str	Lev	Fea	Type	Style	Translation	V1	V3	V4	V5	V6	V7	V8	V9	Ptn	Note	
													Cnt	Wght	Beg-End Date								
44AX48	74	2	140	-	-	18	C	3	-	CRW 0		Whiteware	-	-	-	79	-	1	-	-	1.4	-	
44AX48	74	3	140	-	-	18	C	3	-	CRW 60		Whiteware - Dipped - General	-	-	2	79	-	1	-	50	1.4	-	
44AX48	74	4	140	-	-	18	C	3	-	GBU 4		Unidentified Bottle/Jar-Body	-	-	-	-	-	-	-	3	0.2	-	
44AX48	74	5	140	-	-	18	C	3	-	GBU 4		Unidentified Bottle/Jar-Body	-	-	-	-	-	-	-	5	0.2	-	
44AX48	74	6	140	-	-	18	C	3	-	GBU 4		Unidentified Bottle/Jar-Body	-	-	-	-	-	-	-	9	0.2	-	
44AX48	74	7	140	-	-	18	C	3	-	GBU 4		Unidentified Bottle/Jar-Body	-	-	-	-	-	-	-	1	0.2	-	
44AX48	74	8	140	-	-	18	C	3	-	SAG 11		Broad Glass	320	320	-	2	-	-	11	2.11	-		
44AX48	74	9	140	-	-	18	C	3	-	SAF 7		Unidentified Nail	-	624	-	2	-	-	-	-	2.12	-	
44AX48	75	1	142	-	-	19	C	3	-	CER 1		Redware - Unglazed	-	-	-	520	-	1	-	-	18.111	-	
44AX48	75	2	142	-	-	19	C	3	-	CER 62		Redware - Brown Glaze	-	-	750	357	-	1	-	62	1.7	-	
44AX48	75	3	142	-	-	19	C	3	-	CRP 10		Pearlware - Shell Edge - Blue	-	-	993	79	-	2	-	50	1.4	-	
44AX48	75	4	142	-	-	19	C	3	-	CRP 50		Pearlware - Transfer Printed - Blue, with Stipple	-	-	2	79	-	3	-	50	1.4	-	
44AX48	75	5	142	-	-	19	C	3	-	CRW 0		Whiteware	-	-	-	79	-	1	-	-	1.4	-	
44AX48	75	6	142	-	-	19	C	3	-	CRW 0		Whiteware	-	-	-	79	-	2	-	-	1.4	-	
44AX48	75	7	142	-	-	19	C	3	-	CRP 0		Pearlware	-	-	-	79	-	1	-	-	1.4	-	
44AX48	75	8	142	-	-	19	C	3	-	GBU 4		Unidentified Bottle/Jar-Body	-	-	-	-	-	-	5	0.2	-		
44AX48	75	9	142	-	-	19	C	3	-	GBU 4		Unidentified Bottle/Jar-Body	-	-	-	-	-	-	9	0.2	-		
44AX48	75	10	142	-	-	19	C	3	-	GBU 4		Unidentified Bottle/Jar-Body	-	-	92	-	-	-	1	0.2	unidentified embossed lettering		
44AX48	75	11	142	-	-	19	C	3	-	SAG 11		Broad Glass	320	320	-	2	-	-	11	2.11	-		
44AX48	75	12	142	-	-	19	C	3	-	SAF 5		Machine Cut/Wrought Nail	-	624	-	414	2	-	-	-	2.12	-	
44AX48	75	13	142	-	-	19	C	3	-	PTE 98		Pipe Bowl - Unidentified Shape Bowl	-	-	-	-	1	-	1	7.51	-		
44AX48	76	1	144	-	-	20	B	2	-	CRP 0		Pearlware	-	-	-	79	-	1	-	1.4	-		
44AX48	76	2	144	-	-	20	B	2	-	CRP 10		Pearlware - Shell Edge - Blue	-	-	987	77	-	2	-	50	1.4	-	
44AX48	76	3	144	-	-	20	B	2	-	CRP 35		Pearlware - Underglaze Handpainted - Blue	-	-	102	77	-	1	-	50	1.4	-	
44AX48	76	4	144	-	-	20	B	2	-	CPJ 0		Hard Paste Porcelain	-	-	-	79	-	1	-	-	1.4	-	
44AX48	76	5	144	-	-	20	B	2	-	OPP 10		Oriental Porcelain - Underglaze Blue - Miscellaneous Undated	-	-	2	79	-	1	-	50	1.4	-	
44AX48	76	6	144	-	-	20	B	2	-	GBU 4		Unidentified Bottle/Jar-Body	-	-	-	-	-	-	1	0.2	-		
44AX48	76	7	144	-	-	20	B	2	-	SAG 11		Broad Glass	320	320	-	2	-	-	11	2.11	-		
44AX48	76	8	144	-	-	20	B	2	-	SAF 5		Machine Cut/Wrought Nail	-	624	-	414	2	-	-	-	2.12	-	
44AX48	76	9	144	-	-	20	B	2	-	PTS 1		Pipe Stem - Measurable	-	-	-	-	3	-	4	7.51	-		
44AX48	77	1	146	3	-	-	A	1	-	GBU 4		Unidentified Bottle/Jar-Body	-	-	-	-	-	-	1	0.2	-		
44AX48	77	2	146	3	-	-	A	1	-	GBU 4		Unidentified Bottle/Jar-Body	-	-	-	-	-	-	9	0.2	-		
44AX48	77	3	146	3	-	-	A	1	-	GBU 4		Unidentified Bottle/Jar-Body	-	-	92	-	-	-	9	0.2	embossed "...E...."		
44AX48	77	4	146	3	-	-	A	1	-	GBU 4		Unidentified Bottle/Jar-Body	-	-	-	-	-	-	17	0.2	-		
44AX48	77	5	146	3	-	-	A	1	-	SGB 31		Cartridge Casing - 22 Caliber	-	634	-	320	2	-	-	-	4.26	no headstamp stamped "YALE", impressed "A2293"	
44AX48	77	6	146	3	-	-	A	1	-	SPO 1		Key	-	604	-	-	1	-	-	-	6.41	-	

Site	Cat	Spec	Fld	Tr	STP	Unit	Str	Lev	Fea	Type	Style	Translation	Cnt	Wght	Beg-End Date	V1	V3	V4	V5	V6	V7	V8	V9	Ptn	Note
44AX48	77	7	146	3	-	-	A	1	-	SAG 11		Broad Glass	9	10.3	- 1926	-	320	-	-	2	-	-	11	2.11	-
44AX48	77	8	146	3	-	-	A	1	-	SAF 74		Machine Cut Nail - Unknown Head	1	-	- 1790	-	624	-	414	2	-	-	-	2.12	-
44AX48	77	9	146	3	-	-	A	1	-	SOS 1		Unidentified Metal	2	47.4	-	-	624	-	-	2	-	-	-	0.0	-
44AX48	78	1	147	4	-	-	B	2	-	CER 1		Redware - Unglazed	6	-	-	-	-	-	520	-	1	-	-	18.111	-
44AX48	78	2	147	4	-	-	B	2	-	CER 1		Redware - Unglazed	1	-	-	-	-	-	520	-	1	-	-	18.111	Painted green
44AX48	78	3	147	4	-	-	B	2	-	CSL 11		Stoneware - Gray Salt Glazed w/ Albany Slip	1	-	- 1800 1940	-	677	357	-	1	-	-	-	1.7	-
44AX48	78	4	147	4	-	-	B	2	-	CRP 0		Pearlware	1	-	- 1775 1840	-	-	-	79	-	1	-	-	1.4	-
44AX48	78	5	147	4	-	-	B	2	-	CRP 35		Pearlware - Underglaze Handpainted - Blue	1	-	- 1775 1820	-	2	79	-	1	-	50	1.4	-	
44AX48	78	6	147	4	-	-	B	2	-	CRP 50		Pearlware - Transfer Printed - Blue, with Stipple	1	-	- 1800 1840	-	2	79	-	1	-	50	1.4	-	
44AX48	78	7	147	4	-	-	B	2	-	CRP 52		Pearlware - Transfer Printed - Brown	1	-	- 1775 1840	-	2	79	-	2	-	62	1.4	both surfaces decorated	
44AX48	78	8	147	4	-	-	B	2	-	CRP 60		Pearlware - Dipped - General	1	-	- 1790 1890	-	553	78	-	1	-	6	1.4	-	
44AX48	78	9	147	4	-	-	B	2	-	CRW 0		Whiteware	5	-	- 1820	-	-	-	79	-	1	-	-	1.4	-
44AX48	78	10	147	4	-	-	B	2	-	CPJ 0		Hard Paste Porcelain	1	-	-	-	-	-	79	-	1	-	-	1.4	-
44AX48	78	11	147	4	-	-	B	2	-	CPF 0		Soft Paste Porcelain	1	-	-	-	-	-	79	-	1	-	-	1.4	-
44AX48	78	12	147	4	-	-	B	2	-	GBU 4		Unidentified Bottle/Jar-Body	5	-	-	-	-	-	-	-	-	5	0.2	-	
44AX48	78	13	147	4	-	-	B	2	-	GBU 4		Unidentified Bottle/Jar-Body	1	-	-	-	-	-	-	-	-	9	0.2	-	
44AX48	78	14	147	4	-	-	B	2	-	GBU 4		Unidentified Bottle/Jar-Body	11	-	-	-	-	-	-	-	-	1	0.2	-	
44AX48	78	15	147	4	-	-	B	2	-	SAG 11		Broad Glass	22	14.3	- 1926	-	320	-	-	2	-	-	11	2.11	-
44AX48	78	16	147	4	-	-	B	2	-	SAF 7		Unidentified Nail	6	-	-	-	624	-	-	2	-	-	-	2.12	-
44AX48	78	17	147	4	-	-	B	2	-	SMH 70		Bolt	1	-	-	-	624	-	-	2	-	-	-	19.115	-
44AX48	79	1	150	5	-	-	B	2	-	CER 1		Redware - Unglazed	2	-	-	-	-	-	520	-	1	-	-	18.111	-
44AX48	79	2	150	5	-	-	B	2	-	CRY 0		Yellowware	1	-	- 1827 1940	-	-	-	79	-	1	-	-	1.4	-
44AX48	79	3	150	5	-	-	B	2	-	CRP 35		Pearlware - Underglaze Handpainted - Blue	1	-	- 1775 1820	-	2	79	-	3	-	50	1.4	-	
44AX48	79	4	150	5	-	-	B	2	-	CRP 10		Pearlware - Shell Edge - Blue	1	-	- 1800 1840	-	987	77	-	2	-	50	1.4	-	
44AX48	79	5	150	5	-	-	B	2	-	CRP 11		Pearlware - Shell Edge - Green	1	-	- 1800 1840	-	987	77	-	2	-	40	1.4	-	
44AX48	79	6	150	5	-	-	B	2	-	CRP 0		Pearlware	2	-	- 1775 1840	-	-	-	79	-	1	-	-	1.4	-
44AX48	79	7	150	5	-	-	B	2	-	CRW 0		Whiteware	4	-	- 1820	-	-	-	79	-	1	-	-	1.4	-
44AX48	79	8	150	5	-	-	B	2	-	CRW 0		Whiteware	1	-	- 1820	-	-	-	79	-	2	-	-	1.4	-
44AX48	79	9	150	5	-	-	B	2	-	CRI 20		Ironstone - Embossed Rim	1	-	- 1840	-	965	106	-	2	-	-	-	1.117	-
44AX48	79	10	150	5	-	-	B	2	-	CPF 0		Soft Paste Porcelain	1	-	-	-	-	-	79	-	2	-	-	1.4	-
44AX48	79	11	150	5	-	-	B	2	-	GBU 4		Unidentified Bottle/Jar-Body	3	-	-	-	-	-	-	-	-	7	0.2	-	
44AX48	79	12	150	5	-	-	B	2	-	GBU 4		Unidentified Bottle/Jar-Body	17	-	-	-	-	-	-	-	-	3	0.2	1.4	0.2 melted
44AX48	79	13	150	5	-	-	B	2	-	GBU 4		Unidentified Bottle/Jar-Body	2	-	-	-	-	-	-	-	-	5	0.2	-	-
44AX48	79	14	150	5	-	-	B	2	-	GBU 4		Unidentified Bottle/Jar-Body	19	-	-	-	-	-	-	-	-	1	0.2	-	-
44AX48	79	15	150	5	-	-	B	2	-	GBU 4		Unidentified Bottle/Jar-Body	6	-	-	-	-	-	-	-	-	9	0.2	-	-
44AX48	79	16	150	5	-	-	B	2	-	GBU 2		Unidentified Bottle/Jar-Base	1	-	- 1904	-	55	-	-	-	8	-	1	0.2	-
44AX48	79	17	150	5	-	-	B	2	-	GBU 3		Unidentified Bottle/Jar-Finish	1	-	-	-	-	-	-	-	-	149	1	0.2	-

Site	Cat	Spec	Fld	Tr	STP	Unit	Str	Lev	Fea	Type	Style	Translation	Cnt	Wght	Beg-End Date	V1	V3	V4	V5	V6	V7	V8	V9	Ptn	Note
44AX48	79	18	150	5	-	-	B	2	-	GBU 4		Unidentified Bottle/Jar-Body	1	-	-	-	92	-	-	-	-	-	1	0.2	unidentified embossed lettering
44AX48	79	19	150	5	-	-	B	2	-	GBU 4		Unidentified Bottle/Jar-Body	28	-	-	-	-	-	-	-	-	1	0.2	melted	
44AX48	79	20	150	5	-	-	B	2	-	SAG 11		Broad Glass	18	6.7	1926	320	-	-	-	2	-	11	2.11	-	
44AX48	79	21	150	5	-	-	B	2	-	SAT 1		Tile	1	-	-	204	-	110	2	-	-	2	2.16	-	
44AX48	79	22	150	5	-	-	B	2	-	SAF 5		Machine Cur/Wrought Nail	7	-	-	624	-	-	-	2	-	-	-	2.12	-
44AX48	79	23	150	5	-	-	B	2	-	SOS 1		Unidentified Metal	1	0.8	-	624	-	-	999	2	-	-	-	0.0	-
44AX48	79	24	150	5	-	-	B	2	-	ZMZ 1		Unidentified Mammal	1	0.6	-	-	-	-	-	-	-	-	-	11.127	-
44AX48	80	1	153	6	-	-	B	2	-	CER 1		Redware - Unglazed	9	-	-	-	-	-	520	-	6	-	-	18.111	dark red, hard paste
44AX48	80	2	153	6	-	-	B	2	-	CER 1		Redware - Unglazed	5	-	-	-	-	520	-	-	1	-	-	18.111	-
44AX48	80	3	153	6	-	-	B	2	-	CER 61		Redware - Dark Brown Glaze	1	-	-	-	750	357	-	-	1	-	61	1.7	-
44AX48	80	4	153	6	-	-	B	2	-	CER 98		Redware - Other	1	-	-	-	750	357	-	-	1	-	10	1.7	-
44AX48	80	5	153	6	-	-	B	2	-	CRG 0		Creamware	3	-	1762 1820	-	-	-	79	-	1	-	-	1.4	-
44AX48	80	6	153	6	-	-	B	2	-	CRP 0		Pearlware	4	-	1775 1840	-	-	-	79	-	1	-	-	1.4	-
44AX48	80	7	153	6	-	-	B	2	-	CRP 50		Pearlware - Transfer Printed - Blue, with Stipple	1	-	1800 1840	-	2	79	-	1	-	50	1.4	-	
44AX48	80	8	153	6	-	-	B	2	-	CRP 60		Pearlware - Dipped - General	1	-	1790 1890	-	2	79	-	1	-	50	1.4	-	
44AX48	80	9	153	6	-	-	B	2	-	CRW 0		Whiteware	5	-	1820	-	-	79	-	1	-	-	-	1.4	-
44AX48	80	10	153	6	-	-	B	2	-	CRW 0		Whiteware	1	-	1820	-	-	79	-	3	-	-	-	1.4	-
44AX48	80	11	153	6	-	-	B	2	-	CRJ 0		Ironstone	1	-	1840	-	-	79	-	3	-	-	-	1.4	-
44AX48	80	12	153	6	-	-	B	2	-	CPJ 0		Hard Paste Porcelain	2	-	-	-	-	79	-	1	-	-	-	1.4	-
44AX48	80	13	153	6	-	-	B	2	-	CFL 51		Westerwald - Incised Only	1	-	1675 1775	-	610	140	-	1	-	50	1.5	-	
44AX48	80	14	153	6	-	-	B	2	-	GBU 4		Unidentified Bottle/Jar-Body	23	-	-	-	-	-	-	-	-	3	0.2	-	
44AX48	80	15	153	6	-	-	B	2	-	GBU 4		Unidentified Bottle/Jar-Body	3	-	-	-	-	-	-	-	-	5	0.2	-	
44AX48	80	16	153	6	-	-	B	2	-	GOU 1		Unidentified Curved/Vessel Glass	1	-	-	-	-	-	-	-	-	2	0.0	-	
44AX48	80	17	153	6	-	-	B	2	-	GBU 4		Unidentified Bottle/Jar-Body	4	-	-	-	-	-	-	-	-	7	0.2	-	
44AX48	80	18	153	6	-	-	B	2	-	GBU 4		Unidentified Bottle/Jar-Body	4	-	-	-	-	-	-	-	-	9	0.2	-	
44AX48	80	19	153	6	-	-	B	2	-	GBU 4		Unidentified Bottle/Jar-Body	46	-	-	-	-	-	-	-	-	1	0.2	-	
44AX48	80	20	153	6	-	-	B	2	-	GBU 2		Unidentified Bottle/Jar-Base	1	-	-	-	-	-	-	-	99	-	1	0.2	-
44AX48	80	21	153	6	-	-	B	2	-	GBU 3		Unidentified Bottle/Jar-Finish	1	-	-	-	-	-	-	-	-	140	1	0.2	-
44AX48	80	22	153	6	-	-	B	2	-	GBU 4		Unidentified Bottle/Jar-Body	1	-	-	-	92	-	-	-	-	1	0.2	unidentified embossed lettering	
44AX48	80	23	153	6	-	-	B	2	-	GOU 3		Unidentified Table or Lighting Glass	4	-	-	-	-	-	-	-	-	1	0.0	-	
44AX48	80	24	153	6	-	-	B	2	-	GBU 4		Unidentified Bottle/Jar-Body	24	-	-	-	-	-	-	-	-	1	0.2	melted	
44AX48	80	25	153	6	-	-	B	2	-	SAG 11		Broad Glass	21	7.3	1926	320	-	-	-	2	-	11	2.11	-	
44AX48	80	26	153	6	-	-	B	2	-	SAF 5		Machine Cur/Wrought Nail	4	-	-	624	-	414	2	-	-	-	-	2.12	-
44AX48	80	27	153	6	-	-	B	2	-	ZMR 1		Unidentified Rodent	1	0.4	-	-	-	7	2	-	-	-	-	11.126	-
44AX48	81	1	160	7	-	-	B	2	-	CRW 0		Whiteware	5	-	1820	-	-	79	-	1	-	-	-	1.4	-
44AX48	81	2	160	7	-	-	B	2	-	CRP 0		Pearlware	1	-	1775 1840	-	-	79	-	1	-	-	-	1.4	-

Site	Cat	Spec	Fld	Tr	STP	Unit	Str	Lev	Fea	Type	Style	Translation	V1	V3	V4	V5	V6	V7	V8	V9	Ptn	Note	
													Beg-End Date										
44AX48	81	3	160	7	-	-	B	2	-	CER 0		Redware	-	-	748	520	-	1	-	-	18.111	-	
44AX48	81	4	160	7	-	-	B	2	-	SAG 11		Broad Glass	1926	320	-	2	-	-	11	-	2.11	-	
44AX48	81	5	160	7	-	-	B	2	-	SAF 7		Unidentified Nail	-	624	414	2	-	-	-	-	2.12	-	
44AX48	82	1	171	7	-	-	C	3	-	CRC 0		Creamware	1762	-	79	-	1	-	-	-	1.4	-	
44AX48	82	2	171	7	-	-	C	3	-	CRP 0		Pearlware	1775	1840	-	79	-	1	-	-	1.4	-	
44AX48	82	3	171	7	-	-	C	3	-	CRP 35		Pearlware - Underglaze Handpainted - Blue	1775	1820	2	77	-	1	-	50	1.4	-	
44AX48	82	4	171	7	-	-	C	3	-	CRP 35		Pearlware - Underglaze Handpainted - Blue	1775	1820	239	79	-	2	-	50	1.4	both surfaces decorated	
44AX48	82	5	171	7	-	-	C	3	-	CRP 35		Pearlware - Underglaze Handpainted - Blue	1775	1820	2	79	-	2	-	50	1.4	both surfaces decorated	
44AX48	82	6	171	7	-	-	C	3	-	CRP 35		Pearlware - Underglaze Handpainted - Blue	1775	1820	2	79	-	2	-	50	1.4	-	
44AX48	82	7	171	7	-	-	C	3	-	CRP 36		Pearlware - Underglaze Handpainted - Polychrome	1795	1825	-	102	79	-	2	-	105	1.4	-
44AX48	82	8	171	7	-	-	C	3	-	CRP 60		Pearlware - Dipped - General	1790	1890	-	553	79	-	1	-	50	1.4	-
44AX48	82	9	171	7	-	-	C	3	-	SAF 5		Machine Cut/Wrought Nail	-	624	-	2	-	-	-	-	2.12	-	
44AX48	82	10	171	7	-	-	C	3	-	SAG 11		Broad Glass	1926	320	-	2	-	-	11	-	2.11	-	
44AX48	82	11	171	7	-	-	C	3	-	SAG 9		Plate Glass	-	320	-	2	-	-	10	-	2.11	-	
44AX48	82	12	171	7	-	-	C	3	-	SAP 2		Salt-Glazed Slipped Drain Pipe	1810	220	-	598	2	-	-	-	2.15	-	
44AX48	82	13	171	7	-	-	C	3	-	PTE 98		Pipe Bowl - Unidentified Shape Bowl	-	-	-	-	-	1	-	1	7.51	-	
44AX48	82	14	171	7	-	-	C	3	-	ZMZ 1		Unidentified Mammal	-	-	-	120	2	-	-	-	11.127	-	
44AX48	82	15	171	7	-	-	C	3	-	ZMD 30		Sheep/Goat	-	-	-	50	2	-	-	-	11.125	-	
44AX48	82	16	171	7	-	-	C	3	-	FAP 1		Pine	-	2	-	50	2	10	-	-	12.131	-	
44AX48	82	17	171	7	-	-	C	3	-	FZA 5		Charred Wood - Unidentifiable	-	2	-	50	2	10	-	-	12.131	-	
44AX48	83	1	161	7	-	-	D	4	-	CRP 10		Pearlware - Shell Edge - Blue	1800	1840	987	77	-	2	-	50	1.4	-	
44AX48	83	2	161	7	-	-	D	4	-	CPF 30		Soft Paste Porcelain - Embossed	-	-	1020	77	-	2	-	-	1.4	-	
44AX48	83	3	161	7	-	-	D	4	-	GBA 1		Wine Bottle	-	-	-	-	-	-	5	-	1.2	-	
44AX48	83	4	161	7	-	-	D	4	-	SAG 11		Broad Glass	1926	320	-	2	-	-	11	-	2.11	-	
44AX48	83	5	161	7	-	-	D	4	-	SOS 1		Unidentified Metal	-	624	-	2	-	-	-	-	0.0	-	
44AX48	84	1	162	8	-	-	B	2	-	CER 61		Redware - Dark Brown Glaze	-	-	752	357	-	1	-	61	1.7	-	
44AX48	84	2	162	8	-	-	B	2	-	CRW 0		Whiteware	1820	-	-	79	-	1	-	-	1.4	-	
44AX48	84	3	162	8	-	-	B	2	-	CRC 0		Creamware	1762	1820	-	79	-	1	-	-	1.4	-	
44AX48	84	4	162	8	-	-	B	2	-	CRP 0		Pearlware	1775	1840	-	79	-	1	-	-	1.4	-	
44AX48	84	5	162	8	-	-	B	2	-	CRP 0		Pearlware	1775	1840	-	79	-	3	-	-	1.4	-	
44AX48	84	6	162	8	-	-	B	2	-	CRP 35		Pearlware - Underglaze Handpainted - Blue	1775	1820	2	79	-	1	-	50	1.4	-	
44AX48	84	7	162	8	-	-	B	2	-	CRP 35		Pearlware - Underglaze Handpainted - Blue	1775	1820	2	79	-	1	-	50	1.4	burned	
44AX48	84	8	162	8	-	-	B	2	-	GBA 1		Wine Bottle	-	-	-	-	-	-	5	-	1.2	-	
44AX48	84	9	162	8	-	-	B	2	-	GBU 4		Unidentified Bottle/Jar-Body	-	-	-	-	-	-	5	-	0.2	-	
44AX48	84	10	162	8	-	-	B	2	-	GOU 3		Unidentified Table or Lighting Glass	-	-	-	-	-	-	1	-	0.0	-	
44AX48	84	11	162	8	-	-	B	2	-	SAG 11		Broad Glass	1926	320	-	2	-	-	11	-	2.11	-	
44AX48	84	12	162	8	-	-	B	2	-	SAF 5		Machine Cut/Wrought Nail	-	624	414	2	-	-	-	-	2.12	-	

Site	Cat	Spec	Fld	Tr	STP	Unit	Str	Lev	Fea	Type	Style	Translation	Cnt	Wght	Beg-End Date	V1	V3	V4	V5	V6	V7	V8	V9	Ptn	Note
44AX48	85	1	163	8	-	-	B	3	-	CRC 0		Creamware	1	-	1762 1820	-	-	-	79	-	1	-	-	1.4	-
44AX48	85	2	163	8	-	-	B	3	-	CRP 0		Pearlware	1	-	1775 1840	-	-	-	79	-	1	-	-	1.4	-
44AX48	85	3	163	8	-	-	B	3	-	CRP 35		Pearlware - Underglaze Handpainted - Blue	1	-	1775 1820	-	2	79	-	1	-	50	1.4	-	
44AX48	85	4	163	8	-	-	B	3	-	GBU 4		Unidentified Bottle/Jar-Body	1	-	-	-	-	-	-	-	-	-	1	0.2	-
44AX48	85	5	163	8	-	-	B	3	-	GBA 1		Wine Bottle	1	-	-	-	-	-	-	-	-	-	5	1.2	-
44AX48	86	1	164	8	-	-	C	3	-	CRP 0		Pearlware	7	-	1775 1840	-	-	77	-	-	1	-	-	1.4	-
44AX48	86	2	164	8	-	-	C	3	-	CRW 0		Whiteware	1	-	1820	-	-	79	-	1	-	-	-	1.4	-
44AX48	86	3	164	8	-	-	C	3	-	CRW 0		Whiteware	1	-	1820	-	-	79	-	3	-	-	-	1.4	-
44AX48	86	4	164	8	-	-	C	3	-	CRY 0		Yellowware	2	-	1827 1940	-	-	79	-	1	-	-	-	1.4	-
44AX48	86	5	164	8	-	-	C	3	-	GBU 4		Unidentified Bottle/Jar-Body	3	-	-	-	-	-	-	-	-	-	5	0.2	-
44AX48	86	6	164	8	-	-	C	3	-	SAG 11		Broad Glass	3	2.2	1926	-	320	-	-	2	-	-	11	2.11	-
44AX48	86	7	164	8	-	-	C	3	-	SAF 5		Machine Cut/Wrought Nail	1	-	-	-	624	-	414	2	-	-	-	2.12	-
44AX48	86	8	164	8	-	-	C	3	-	PTS 1		Pipe Stem - Measurable	1	-	-	-	-	-	-	-	3	-	5	7.51	-
44AX48	86	9	164	8	-	-	C	3	-	ZMD 70		Cow	1	9.4	-	-	-	13	2	-	-	-	-	11.125	-
44AX48	87	1	167	10	-	-	B	2	-	CSL 11		Stoneware - Gray Salt Glazed w/ Albany Slip	1	-	1800 1940	-	677	357	-	-	1	-	-	1.7	-
44AX48	87	2	167	10	-	-	B	2	-	CRC 0		Creamware	7	-	1762 1820	-	-	79	-	1	-	-	-	1.4	-
44AX48	87	3	167	10	-	-	B	2	-	CRC 32		Creamware - Overglaze Handpainted - Polychrome	1	-	1765 1810	-	102	78	-	-	1	-	105	1.4	-
44AX48	87	4	167	10	-	-	B	2	-	CRP 0		Pearlware	3	-	1775 1840	-	-	79	-	1	-	-	-	1.4	-
44AX48	87	5	167	10	-	-	B	2	-	CRP 25		Pearlware - Embossed Body	2	-	1775 1840	-	1011	79	-	1	-	-	-	1.4	-
44AX48	87	6	167	10	-	-	B	2	-	CRP 35		Pearlware - Underglaze Handpainted - Blue	1	-	1775 1820	-	168	78	-	1	-	50	1.4	-	
44AX48	87	7	167	10	-	-	B	2	-	CRP 35		Pearlware - Underglaze Handpainted - Blue	1	-	1775 1820	-	239	78	-	1	-	50	1.4	-	
44AX48	87	8	167	10	-	-	B	2	-	CRP 35		Pearlware - Underglaze Handpainted - Blue	1	-	1775 1820	-	2	79	-	1	-	50	1.4	-	
44AX48	87	9	167	10	-	-	B	2	-	CPJ 0		Hard Paste Porcelain	1	-	-	-	-	79	-	2	-	-	-	1.4	-
44AX48	87	10	167	10	-	-	B	2	-	GBU 4		Unidentified Bottle/Jar-Body	1	-	-	-	-	-	-	-	-	-	5	0.2	-
44AX48	87	11	167	10	-	-	B	2	-	GBU 4		Unidentified Bottle/Jar-Body	1	-	-	-	-	-	-	-	-	-	1	0.2	-
44AX48	87	12	167	10	-	-	B	2	-	GTT 43		Tumbler/Fluted	1	-	-	-	2	-	-	-	-	-	1	1.3	-
44AX48	87	13	167	10	-	-	B	2	-	SAG 11		Broad Glass	2	2.2	1926	-	320	-	2	-	2	-	11	2.11	-
44AX48	87	14	167	10	-	-	B	2	-	SAF 5		Machine Cut/Wrought Nail	3	-	-	-	624	-	414	2	-	-	-	2.12	-
44AX48	87	15	167	10	-	-	B	2	-	SOS 1		Unidentified Metal	2	33.9	-	-	624	-	-	2	-	-	-	0.0	-
44AX48	88	1	168	11	-	-	A	1	-	CRW 0		Whiteware	2	-	1820	-	-	79	-	1	-	-	-	1.4	-
44AX48	88	2	168	11	-	-	A	1	-	CRW 0		Whiteware	1	-	1820	-	-	79	-	2	-	-	-	1.4	-
44AX48	88	3	168	11	-	-	A	1	-	SCF 54		Plain Small China Button	1	-	1850	-	212	25	1	-	-	-	-	5.31	-
44AX48	88	4	168	11	-	-	A	1	-	SGB 31		Cartridge Casing - 22 Caliber	1	-	1857	-	604	320	1	-	-	-	-	4.26	no headstamp
44AX48	89	1	169	11	-	-	B	2	-	GER 1		Redware - Unglazed	1	-	-	-	-	520	-	1	-	-	-	18.111	-
44AX48	89	2	169	11	-	-	B	2	-	GER 61		Redware - Dark Brown Glaze	1	-	-	-	752	357	-	7	-	61	1.7	-	
44AX48	89	3	169	11	-	-	B	2	-	CSL 0		Stoneware - Gray Salt Glazed	1	-	-	-	-	357	-	2	-	-	-	1.7	-

Site	Cat	Spec	Fld	Tr	STP	Unit	Str	Lev	Fea	Type	Translation	Cnt	Wght	Beg-End Date	V1	V3	V4	V5	V6	V7	V8	V9	Ptn	Note
44AX48	89	4	169	11	-	-	B	2	-	CSL 81	Stoneware - Buff Salt Glazed	1	-	-	-	-	615	357	-	1	-	-	1.7	two incised lines
44AX48	89	5	169	11	-	-	B	2	-	CR0	Creamware	10	-	1762 1820	-	-	-	79	-	1	-	-	1.4	-
44AX48	89	6	169	11	-	-	B	2	-	CR0	Creamware	1	-	1762 1820	-	-	-	79	-	2	-	-	1.4	-
44AX48	89	7	169	11	-	-	B	2	-	CRP 0	Pearlware	9	-	1775 1840	-	-	-	79	-	1	-	-	1.4	-
44AX48	89	8	169	11	-	-	B	2	-	CRP 0	Pearlware	1	-	1775 1840	-	-	-	78	-	7	-	-	1.4	-
44AX48	89	9	169	11	-	-	B	2	-	CRP 10	Pearlware - Shell Edge - Blue	1	-	1775 1840	-	-	993	79	-	2	-	50	1.4	-
44AX48	89	10	169	11	-	-	B	2	-	CRP 11	Pearlware - Shell Edge - Green	2	-	1775 1840	-	-	993	79	-	2	-	40	1.4	-
44AX48	89	11	169	11	-	-	B	2	-	CRP 35	Pearlware - Underglaze Handpainted - Blue	1	-	1775 1820	-	-	2	79	-	1	-	50	1.4	both surfaces decorated
44AX48	89	12	169	11	-	-	B	2	-	CRP 36	Pearlware - Underglaze Handpainted - Polychrome	1	-	1795 1825	-	-	168	79	-	3	-	114	1.4	-
44AX48	89	13	169	11	-	-	B	2	-	CRW 0	Whiteware	1	-	1820	-	-	-	79	-	1	-	-	1.4	-
44AX48	89	14	169	11	-	-	B	2	-	CRK 0	Miscellaneous Refined Earthenwares	1	-	-	-	-	-	77	-	1	-	-	1.4	burned
44AX48	89	15	169	11	-	-	B	2	-	CPP 0	Oriental Porcelain	1	-	1660 1860	-	-	-	79	-	1	-	-	1.4	-
44AX48	89	16	169	11	-	-	B	2	-	CPP 10	Oriental Porcelain - Underglaze Blue - Miscellaneous Undated	1	-	-	-	-	2	79	-	1	-	50	1.4	-
44AX48	89	17	169	11	-	-	B	2	-	OPF 57	Soft Paste Porcelain - Decal - Overglaze	1	-	1830	-	-	239	106	-	2	-	97	1.117	-
44AX48	89	18	169	11	-	-	B	2	-	GBA 1	Wine Bottle	2	-	-	-	-	-	-	-	-	-	5	1.2	-
44AX48	89	19	169	11	-	-	B	2	-	GBU 4	Unidentified Bottle/Jar-Body	2	-	-	-	-	-	-	-	-	-	5	0.2	-
44AX48	89	20	169	11	-	-	B	2	-	GOU 3	Unidentified Table or Lighting Glass	3	-	-	-	-	-	-	-	-	-	1	0.0	-
44AX48	89	21	169	11	-	-	B	2	-	SAG 11	Broad Glass	3	1.2	1926	-	320	-	-	2	-	-	11	2.11	melted
44AX48	89	22	169	11	-	-	B	2	-	SAG 11	Broad Glass	37	-	1926	-	320	-	-	2	-	-	11	2.11	-
44AX48	89	23	169	11	-	-	B	2	-	SAF 5	Machine Cut/Wrought Nail	19	-	-	-	624	-	-	2	-	-	-	2.12	-
44AX48	89	24	169	11	-	-	B	2	-	SCF 54	Plain Small China Button	1	-	1850	-	212	-	25	1	-	-	-	5.31	with embossed beading around rim
44AX48	89	25	169	11	-	-	B	2	-	ZMD 30	Sheep/Goat	1	3.1	-	-	-	-	111	2	-	-	-	11.125	-
44AX48	89	26	169	11	-	-	B	2	-	ZMD 30	Sheep/Goat	2	5.5	-	-	-	-	13	2	-	-	-	11.125	-
44AX48	89	27	169	11	-	-	B	2	-	ZM2 1	Unidentified Mammal	10	5.9	-	-	-	-	999	2	-	-	-	11.127	-
44AX48	90	1	170	11	-	-	C	3	-	CRP 10	Pearlware - Shell Edge - Blue	1	-	1775 1840	-	-	993	79	-	2	-	50	1.4	-
44AX48	90	2	170	11	-	-	C	3	-	CRP 35	Pearlware - Underglaze Handpainted - Blue	1	-	1775 1820	-	-	2	79	-	1	-	50	1.4	-
44AX48	90	3	170	11	-	-	C	3	-	CRP 0	Pearlware	5	-	1775 1840	-	-	-	79	-	1	-	-	1.4	-
44AX48	90	4	170	11	-	-	C	3	-	OPP 10	Oriental Porcelain - Underglaze Blue - Miscellaneous Undated	1	-	-	-	-	2	79	-	1	-	50	1.4	-
44AX48	90	5	170	11	-	-	C	3	-	CPJ 0	Hard Paste Porcelain	1	-	-	-	-	-	78	-	7	-	-	1.4	-
44AX48	90	6	170	11	-	-	C	3	-	CRK 0	Miscellaneous Refined Earthenwares	1	-	-	-	-	-	79	-	1	-	-	1.4	burned
44AX48	90	7	170	11	-	-	C	3	-	CSL 0	Stoneware - Gray Salt Glazed	1	-	-	-	-	-	357	-	1	-	-	1.7	-
44AX48	90	8	170	11	-	-	C	3	-	GOU 1	Unidentified Curved/Vessel Glass	1	-	-	-	-	-	-	-	-	-	1	0.0	-
44AX48	90	9	170	11	-	-	C	3	-	GOU 3	Unidentified Table or Lighting Glass	1	-	-	-	-	-	-	-	-	-	1	0.0	-
44AX48	90	10	170	11	-	-	C	3	-	GOU 3	Unidentified Table or Lighting Glass	1	-	-	-	-	-	-	-	-	-	9	0.0	-
44AX48	90	11	170	11	-	-	C	3	-	SAF 5	Machine Cut/Wrought Nail	7	-	-	-	624	-	-	2	-	-	-	2.12	-

Site	Cat	Spec	Fld	Tr	STP	Unit	Str	Lev	Fea	Type	Style	Translation	Cnt	Wght	Beg-End Date	V1	V3	V4	V5	V6	V7	V8	V9	Ptn	Note
44AX48	90	12	170	11	-	-	C	3	-	SAG	11	Broad Glass	8	3.8	- 1926	-	320	-	-	2	-	-	11	2.11	-
44AX48	90	13	170	11	-	-	C	3	-	SOS	1	Unidentified Metal	1	6.8	- -	-	634	-	-	2	-	-	-	0.0	-
44AX48	90	14	170	11	-	-	C	3	-	PTS	1	Pipe Stem - Measurable	1	-	- -	-	-	-	-	-	3	-	5	7.51	-
44AX48	90	15	170	11	-	-	C	3	-	ZMZ	1	Unidentified Mammal	2	1.2	- -	-	-	-	999	2	-	-	-	11.127	-
44AX48	91	1	110	-	-	-	-	-	1	CRW	0	Whiteware	1	-	- 1820	-	-	-	79	-	1	-	-	1.4	-
44AX48	91	2	110	-	-	-	-	-	1	GBU	4	Unidentified Bottle/Jar-Body	4	-	- -	-	-	-	-	-	-	-	1	0.2	-
44AX48	91	3	110	-	-	-	-	-	1	GBU	4	Unidentified Bottle/Jar-Body	1	-	- -	-	-	-	-	-	-	-	7	0.2	-
44AX48	91	4	110	-	-	-	-	-	1	GBU	4	Unidentified Bottle/Jar-Body	5	-	- -	-	-	-	-	-	-	-	9	0.2	-
44AX48	91	5	110	-	-	-	-	-	1	GBU	4	Unidentified Bottle/Jar-Body	1	-	- -	-	-	-	-	-	-	-	12	0.2	-
44AX48	91	6	110	-	-	-	-	-	1	GBU	4	Unidentified Bottle/Jar-Body	8	-	- -	-	-	-	-	-	-	-	17	0.2	-
44AX48	91	7	110	-	-	-	-	-	1	SAG	11	Broad Glass	2	3.5	- 1926	-	320	-	-	2	-	-	11	2.11	-
44AX48	92	1	132	-	-	-	-	-	1	CRI	0	Ironstone	1	-	- 1840	-	-	103	-	2	-	-	-	1.117	-
44AX48	92	2	132	-	-	-	-	-	1	CRW	0	Whiteware	1	-	- 1820	-	-	79	-	1	-	-	-	1.4	-
44AX48	92	3	132	-	-	-	-	-	1	CRW	50	Whiteware - Transfer Printed - Blue	1	-	- 1820 1915	-	2	79	-	1	-	50	1.4	-	
44AX48	92	4	132	-	-	-	-	-	1	GBU	4	Unidentified Bottle/Jar-Body	2	-	- -	-	-	-	-	-	-	-	1	0.2	-
44AX48	92	5	132	-	-	-	-	-	1	GBU	4	Unidentified Bottle/Jar-Body	3	-	- -	-	-	-	-	-	-	-	17	0.2	-
44AX48	93	1	127	1	-	-	-	-	4	SAG	11	Broad Glass	1	1.1	- 1926	-	320	-	-	2	-	-	11	2.11	-
44AX48	94	1	136	2	-	-	-	-	11	CPJ	0	Hard Paste Porcelain	1	-	- -	-	-	79	-	-	1	-	-	1.4	-
44AX48	94	2	136	2	-	-	-	-	11	GOU	1	Unidentified Curved/Vessel Glass	1	-	- -	-	-	79	-	-	-	-	1	0.0	-
44AX48	95	1	176	-	-	-	-	-	13	CRW	0	Whiteware	1	-	- 1820	-	-	79	-	1	-	-	-	1.4	-
44AX48	95	2	176	-	-	-	-	-	13	CER	1	Redware - Unglazed	1	-	- -	-	-	520	-	1	-	-	-	18.111	-
44AX48	95	3	176	-	-	-	-	-	13	SAF	7	Unidentified Nail	4	-	- -	-	624	-	-	2	-	-	-	2.12	-
44AX48	96	1	181	-	-	-	-	-	13	CRW	55	Whiteware - Transfer Printed - Other Colors	1	-	- 1825 1915	-	140	77	-	1	-	30	1.4	-	
44AX48	96	2	181	-	-	-	-	-	13	CRW	0	Whiteware	1	-	- 1820	-	-	78	-	1	-	-	-	1.4	-
44AX48	96	3	181	-	-	-	-	-	13	SAF	74	Machine Cut Nail - Unknown Head	3	-	- 1790	-	624	414	2	-	-	-	-	2.12	-
44AX48	96	4	181	-	-	-	-	-	13	SOS	1	Unidentified Metal	1	72.6	- -	-	624	-	2	-	-	-	-	0.0	iron bar
44AX48	97	1	187	-	-	-	-	-	13	SAF	5	Machine Cut/Wrought Nail	1	-	- -	-	624	-	414	2	-	-	-	2.12	-
44AX48	98	1	141	-	-	-	-	-	13	CRW	0	Whiteware	6	-	- 1820	-	-	79	-	1	-	-	-	1.4	-
44AX48	98	2	141	-	-	-	-	-	13	CRW	60	Whiteware - Dipped - General	1	-	- 1820 1900	-	553	78	-	1	-	62	1.4	-	
44AX48	98	3	141	-	-	-	-	-	13	CRY	0	Yellowware	1	-	- 1827 1940	-	-	79	-	1	-	-	-	1.4	-
44AX48	98	4	141	-	-	-	-	-	13	CER	1	Redware - Unglazed	5	-	- -	-	-	520	-	1	-	-	-	18.111	-
44AX48	98	5	141	-	-	-	-	-	13	CPJ	0	Hard Paste Porcelain	2	-	- -	-	-	79	-	1	-	-	-	1.4	-
44AX48	98	6	141	-	-	-	-	-	13	CSB	70	Stoneware - 19th Century Style Bottles - Brown	1	-	- 1820 1910	-	-	126	-	1	-	-	-	1.2	-
44AX48	98	7	141	-	-	-	-	-	13	GBU	4	Unidentified Bottle/Jar-Body	3	-	- -	-	-	-	-	-	-	-	5	0.2	-
44AX48	98	8	141	-	-	-	-	-	13	GBU	4	Unidentified Bottle/Jar-Body	2	-	- -	-	-	-	-	-	-	-	9	0.2	-
44AX48	98	9	141	-	-	-	-	-	13	GOU	1	Unidentified Curved/Vessel Glass	3	-	- -	-	-	-	-	-	-	-	1	0.0	-
44AX48	98	10	141	-	-	-	-	-	13	SAG	11	Broad Glass	13	7.7	- 1926	-	320	-	-	2	-	-	11	2.11	-

Site	Cat	Spec	Fld	Tr	STP	Unit	Str	Lev	Fea	Type	Style	Translation	V1	V3	V4	V5	V6	V7	V8	V9	Ptn	Note
44AX48	98	11	141	-	-	-	-	-	13	SAF 5	Machine Cut/Wrought Nail	624	-	414	2	-	-	-	-	-	2.12	-
44AX48	98	12	141	-	-	-	-	-	13	PTS 1	Pipe Stem - Measurable	-	-	-	-	-	3	-	-	6	7.51	-
44AX48	98	13	141	-	-	-	-	-	13	ZMD 70	Cow	-	1	-	60	6	-	-	-	-	11.125	-
44AX48	98	14	141	-	-	-	-	-	13	ZMD 70	Cow	-	-	-	999	12	-	-	-	-	11.125	-
44AX48	98	15	141	-	-	-	-	-	13	ZMZ 5	Large Mammal	-	-	-	999	2	-	-	-	-	11.127	-
44AX48	98	16	141	-	-	-	-	-	13	ZMZ 1	Unidentified Mammal	-	-	-	999	2	-	-	-	-	11.127	-
44AX48	99	1	143	-	-	-	-	-	13	CRW 0	White ware	-	1820	-	79	-	1	-	-	-	1.4	-
44AX48	99	2	143	-	-	-	-	-	13	SAF 1	Handwrought Nail	624	-	624	-	2	-	-	-	-	2.12	-
44AX48	99	3	143	-	-	-	-	-	13	SAF 5	Machine Cut/Wrought Nail	624	-	624	-	414	2	-	-	-	2.12	-
44AX48	100	1	148	4	-	-	-	-	13	SAG 11	Broad Glass	320	-	320	-	2	-	-	-	11	2.11	-
44AX48	100	2	148	4	-	-	-	-	13	SAF 74	Machine Cut Nail - Unknown Head	624	-	624	-	-	2	-	-	-	2.12	-
44AX48	101	1	154	6	-	-	-	-	13	CRP 0	Pearl ware	-	1790	-	-	79	-	1	-	-	1.4	-
44AX48	101	2	154	6	-	-	-	-	13	CRP 35	Pearl ware - Underglaze Handpainted - Blue	-	-	200	98	-	2	-	50	1.117	both surfaces decorated	
44AX48	101	3	154	6	-	-	-	-	13	CRJ 0	Ironstone	-	-	-	79	-	2	-	-	1.4	-	
44AX48	101	4	154	6	-	-	-	-	13	GBU 4	Unidentified Bottle/Jar-Body	-	-	-	-	-	-	-	5	0.2	-	
44AX48	101	5	154	6	-	-	-	-	13	GTT 43	Tumbler/Fluted	-	-	2	-	-	-	-	1	1.3	-	
44AX48	101	6	154	6	-	-	-	-	13	GOU 3	Unidentified Table or Lighting Glass	-	-	-	-	-	-	-	1	0.0	-	
44AX48	101	7	154	6	-	-	-	-	13	SAG 11	Broad Glass	320	-	320	-	2	-	-	-	11	2.11	-
44AX48	101	8	154	6	-	-	-	-	13	SAF 5	Machine Cut/Wrought Nail	624	-	624	-	414	2	-	-	-	2.12	-
44AX48	101	9	154	6	-	-	-	-	13	FDC 1	Maple	-	-	2	50	2	10	-	-	12.131	-	
44AX48	101	10	154	6	-	-	-	-	13	FTN 10	Hickory	-	2	2	50	2	10	-	-	12.131	-	
44AX48	101	11	154	6	-	-	-	-	13	FTO 1	Oak	-	2	2	50	2	10	-	-	12.131	-	
44AX48	101	12	154	6	-	-	-	-	13	FAT 1	Coniferous Taxa	-	2	2	50	2	10	-	-	12.131	-	
44AX48	101	13	154	6	-	-	-	-	13	FZA 5	Charred Wood - Unidentifiable	-	2	2	50	2	10	-	-	12.131	-	
44AX48	102	1	149	4	-	-	-	-	14	CRW 0	White ware	-	-	-	79	-	1	-	-	1.4	-	
44AX48	102	2	149	4	-	-	-	-	14	CPJ 0	Hard Paste Porcelain	-	-	-	79	-	1	-	-	1.4	-	
44AX48	102	3	149	4	-	-	-	-	14	GBU 4	Unidentified Bottle/Jar-Body	-	-	-	-	-	-	-	5	0.2	-	
44AX48	102	4	149	4	-	-	-	-	14	SAG 11	Broad Glass	320	-	320	-	2	-	-	-	11	2.11	-
44AX48	102	5	149	4	-	-	-	-	14	PTE 92	Pipe Bowl - Unidentified Shape w/o Heel	-	-	-	-	-	5	-	-	7.51	-	
44AX48	102	6	149	4	-	-	-	-	14	ZMZ 1	Unidentified Mammal	-	-	-	999	2	-	-	-	11.127	-	
44AX48	103	1	155	6	-	-	-	-	14	CRJ 0	Cream ware	-	-	-	79	-	1	-	-	1.4	-	
44AX48	103	2	155	6	-	-	-	-	14	CRP 0	Pearl ware	-	1762 1820	-	79	-	1	-	-	1.4	-	
44AX48	103	3	155	6	-	-	-	-	14	CRW 0	White ware	-	1775 1840	-	79	-	1	-	-	1.4	-	
44AX48	103	4	155	6	-	-	-	-	14	CRW 0	White ware	-	-	-	79	-	1	-	-	1.4	-	
44AX48	103	5	155	6	-	-	-	-	14	GBU 4	Unidentified Bottle/Jar-Body	-	-	-	-	-	-	-	1	0.2	-	
44AX48	103	6	155	6	-	-	-	-	14	GBU 4	Unidentified Bottle/Jar-Body	-	-	-	-	-	-	-	11	0.2	-	
44AX48	103	7	155	6	-	-	-	-	14	GTT 46	Tumbler/Ribbed	-	-	4	-	-	-	-	1	1.3	-	
44AX48	103	7	155	6	-	-	-	-	14	GOU 3	Unidentified Table or Lighting Glass	-	-	-	-	-	-	-	1	0.0	-	

Site	Cat	Spec	Fld	Tr	STP	Unit	Str	Lev	Fea	Type	Style	Translation	V1	V3	V4	V5	V6	V7	V8	V9	Ptn	Note	
													Cnt	Wght	Beg-End Date								
44AX48	103	8	155	6	-	-	-	-	14	SAG	11	Broad Glass	320	-	-	-	2	-	-	11	2.11	-	
44AX48	103	9	155	6	-	-	-	-	14	SAF	5	Machine Cut/Wrought Nail	624	-	-	414	2	-	-	-	2.12	-	
44AX48	103	10	155	6	-	-	-	-	14	FAP	1	Pine	2	-	-	50	2	10	-	-	12.131	-	
44AX48	103	11	155	6	-	-	-	-	14	FZA	5	Charred Wood - Unidentifiable	2	-	-	50	2	10	-	-	12.131	-	
44AX48	104	1	151	5	-	-	-	-	15	CER	1	Redware - Unglazed	-	-	-	520	-	1	-	-	18.111	-	
44AX48	104	2	151	5	-	-	-	-	15	CRP	0	Creamware	-	-	-	79	-	1	-	-	1.4	-	
44AX48	104	3	151	5	-	-	-	-	15	CRP	0	Pearlware	-	-	-	79	-	1	-	-	1.4	-	
44AX48	104	4	151	5	-	-	-	-	15	CRK	0	Miscellaneous Refined Earthenwares	-	-	-	79	-	1	-	-	1.4	burned	
44AX48	104	5	151	5	-	-	-	-	15	CRY	76	Yellowware - Rockingham Type Glaze	-	-	-	79	-	1	-	-	1.4	-	
44AX48	104	6	151	5	-	-	-	-	15	GBU	4	Unidentified Bottle/Jar-Body	-	-	-	-	-	-	-	9	0.2	-	
44AX48	104	7	151	5	-	-	-	-	15	GOU	3	Unidentified Table or Lighting Glass	-	-	-	-	-	-	-	1	0.0	-	
44AX48	104	8	151	5	-	-	-	-	15	SAB	1	Brick	1	0.7	-	-	-	-	-	-	2.16	-	
44AX48	104	9	151	5	-	-	-	-	15	SAG	11	Broad Glass	320	-	-	-	2	-	-	11	2.11	-	
44AX48	104	10	151	5	-	-	-	-	15	SAF	5	Machine Cut/Wrought Nail	624	-	-	414	2	-	-	-	2.12	-	
44AX48	104	11	151	5	-	-	-	-	15	SOS	1	Unidentified Metal	610	-	-	-	2	-	-	-	0.0	decorative copper, personal or furnishings-related	
44AX48	104	12	151	5	-	-	-	-	15	ZMD	30	Sheep/Goat	-	-	-	13	2	-	-	-	11.125	-	
44AX48	104	13	151	5	-	-	-	-	15	ZMZ	4	Medium Mammal	-	-	-	120	5	-	-	-	11.127	-	
44AX48	104	14	151	5	-	-	-	-	15	ZMZ	4	Medium Mammal	-	-	-	38	2	-	-	-	11.127	-	
44AX48	104	15	151	5	-	-	-	-	15	ZMZ	1	Unidentified Mammal	-	-	-	999	2	-	-	-	11.127	-	
44AX48	104	16	151	5	-	-	-	-	15	ZMR	1	Unidentified Rodent	-	-	-	30	1	-	-	-	11.126	-	
44AX48	104	17	151	5	-	-	-	-	15	MUR	1	Radiocarbon Sample - Unprocessed	-	-	-	-	-	-	-	-	-	-	
44AX48	105	1	152	5	-	-	-	-	16	ZMD	30	Sheep/Goat	-	-	-	61	6	-	-	-	11.125	refit	
44AX48	106	1	156	6	-	-	-	-	18	CRP	0	Pearlware	-	-	-	79	-	3	-	-	1.4	-	
44AX48	106	2	156	6	-	-	-	-	18	GBU	4	Unidentified Bottle/Jar-Body	-	-	-	-	-	-	-	5	0.2	-	
44AX48	106	3	156	6	-	-	-	-	18	GOU	3	Unidentified Table or Lighting Glass	-	-	-	-	-	-	-	1	0.0	-	
44AX48	106	4	156	6	-	-	-	-	18	SAF	5	Machine Cut/Wrought Nail	624	-	-	414	2	-	-	-	2.12	-	
44AX48	107	1	157	6	-	-	-	-	23	CRP	10	Pearlware - Shell Edge - Blue	-	-	-	993	77	-	2	-	1.4	-	
44AX48	107	2	157	6	-	-	-	-	23	SAG	11	Broad Glass	320	-	-	-	2	-	-	11	2.11	-	
44AX48	108	1	158	6	-	-	-	-	24	CRP	0	Pearlware	-	-	-	79	-	1	-	-	1.4	-	
44AX48	108	2	158	6	-	-	-	-	24	CRP	0	Pearlware	-	-	-	79	-	45	-	-	1.4	-	
44AX48	108	3	158	6	-	-	-	-	24	CRP	11	Pearlware - Shell Edge - Green	-	-	-	987	77	-	2	-	1.4	-	
44AX48	108	4	158	6	-	-	-	-	24	CRP	35	Pearlware - Underglaze Handpainted - Blue	-	-	-	2	77	-	1	-	1.4	-	
44AX48	108	5	158	6	-	-	-	-	24	CFT	0	Stoneware - White Salt Glazed	-	-	-	79	-	1	-	-	1.4	-	
44AX48	108	6	158	6	-	-	-	-	24	GBU	4	Unidentified Bottle/Jar-Body	-	-	-	-	-	-	-	5	0.2	-	
44AX48	108	7	158	6	-	-	-	-	24	GBU	4	Unidentified Bottle/Jar-Body	-	-	-	-	-	-	-	9	0.2	-	
44AX48	108	8	158	6	-	-	-	-	24	GOU	1	Unidentified Curved Vessel Glass	-	-	-	-	-	-	-	9	0.0	-	

Site	Cat	Spec	Fld	Tr	STP	Unit	Str	Lev	Fea	Type	Style	Translation	V1	V3	V4	V5	V6	V7	V8	V9	Ptn	Note	
													Cnt	Wght	Beg-End Date								
44AX48	108	9	158	6	-	-	-	-	24	SAG 11	Broad Glass		320	-	-	-	2	-	-	11	2.11	-	
44AX48	108	10	158	6	-	-	-	-	24	SAF 5	Machine Cut/Wrought Nail		624	-	624	414	2	-	-	-	2.12	-	
44AX48	108	11	158	6	-	-	-	-	24	SAF 18	Unidentified Spike		624	-	624	-	2	-	-	-	2.12	-	
44AX48	108	12	158	6	-	-	-	-	24	ZM 1	Unidentified Mammal		-	-	-	120	2	-	-	-	11.127	-	
44AX48	109	1	159	6	-	-	-	-	25	CR 0	Ceramics		-	-	-	79	1	-	-	-	1.4	-	
44AX48	109	2	159	6	-	-	-	-	25	CR 0	Pearlware		-	-	-	79	1	-	-	-	1.4	-	
44AX48	109	3	159	6	-	-	-	-	25	CRP 57	Pearlware - Transfer Printed - Black with Stipple		-	-	2	79	3	-	60	1.4	-		
44AX48	109	4	159	6	-	-	-	-	25	CRP 50	Pearlware - Transfer Printed - Blue, with Stipple		-	-	2	79	2	-	50	1.4	-		
44AX48	109	5	159	6	-	-	-	-	25	CRW 0	White ware		-	-	-	79	1	-	-	-	1.4	-	
44AX48	109	6	159	6	-	-	-	-	25	CRW 0	White ware		-	-	-	79	2	-	-	-	1.4	-	
44AX48	109	7	159	6	-	-	-	-	25	GBU 4	Unidentified Bottle/Jar-Body		-	-	-	-	-	-	5	0.2	-		
44AX48	109	8	159	6	-	-	-	-	25	GOU 1	Unidentified Curved Vessel Glass		-	-	-	-	-	-	1	0.0	-		
44AX48	109	9	159	6	-	-	-	-	25	SAG 11	Broad Glass		320	-	-	-	2	-	11	2.11	-		
44AX48	109	10	159	6	-	-	-	-	25	SAF 5	Machine Cut/Wrought Nail		624	-	624	414	2	-	-	-	2.12	-	
44AX48	109	11	159	6	-	-	-	-	25	SMH 20	Miscellaneous Wire		624	-	624	-	2	-	-	-	19.115	-	
44AX48	109	12	159	6	-	-	-	-	25	ZM 1	Unidentified Mammal		-	-	-	999	2	-	-	-	11.127	-	
44AX48	110	1	145	-	-	-	-	-	26	CR 0	Ironstone		-	-	-	94	41	-	-	-	1.117	-	
44AX48	110	2	145	-	-	-	-	-	26	SAF 74	Machine Cut Nail - Unknown Head		624	-	624	414	2	-	-	-	2.12	-	
44AX48	111	1	165	9	-	-	-	-	26	CRP 50	Pearlware - Transfer Printed - Blue, with Stipple		-	-	2	79	1	-	50	1.4	both surfaces decorated		
44AX48	111	2	165	9	-	-	-	-	26	CRP 50	Pearlware - Transfer Printed - Blue, with Stipple		-	-	2	79	2	-	50	1.4	-		
44AX48	111	3	165	9	-	-	-	-	26	CRW 0	White ware		-	-	-	79	1	-	-	-	1.4	-	
44AX48	111	4	165	9	-	-	-	-	26	CPJ 0	Hard Paste Porcelain		-	-	-	79	1	-	-	-	1.4	-	
44AX48	111	5	165	9	-	-	-	-	26	GBU 4	Unidentified Bottle/Jar-Body		-	-	-	-	-	-	5	0.2	-		
44AX48	111	6	165	9	-	-	-	-	26	GBU 4	Unidentified Bottle/Jar-Body		-	-	-	-	-	-	9	0.2	-		
44AX48	111	7	165	9	-	-	-	-	26	GBU 2	Unidentified Bottle/Jar-Base		-	-	-	-	99	-	1	0.2	-		
44AX48	111	8	165	9	-	-	-	-	26	GOU 3	Unidentified Table or Lighting Glass		-	-	-	-	-	-	1	0.0	-		
44AX48	111	9	165	9	-	-	-	-	26	SAG 11	Broad Glass		320	-	-	-	2	-	11	2.11	-		
44AX48	111	10	165	9	-	-	-	-	26	SAF 5	Machine Cut/Wrought Nail		624	-	624	414	2	-	-	-	2.12	-	
44AX48	111	11	165	9	-	-	-	-	26	SOS 1	Unidentified Metal		624	-	624	-	2	-	-	-	0.0	-	
44AX48	111	12	165	9	-	-	-	-	26	ZM 1	Unidentified Mammal		-	-	-	999	2	-	-	-	11.127	-	
44AX48	111	13	165	9	-	-	-	-	26	MUR 1	Radiocarbon Sample - Unprocessed		-	-	-	-	-	-	-	-	-	-	-
44AX48	112	1	166	9	-	-	-	-	27	CRW 0	White ware		-	-	-	79	1	-	-	-	1.4	-	
44AX48	112	2	166	9	-	-	-	-	27	CER 61	Redware - Dark Brown Glaze		-	-	752	357	1	-	61	1.7	-		
44AX48	112	3	166	9	-	-	-	-	27	CPJ 0	Hard Paste Porcelain		-	-	-	79	1	-	-	-	1.4	-	
44AX48	112	4	166	9	-	-	-	-	27	GBU 4	Unidentified Bottle/Jar-Body		-	-	-	-	-	-	5	0.2	-		
44AX48	112	5	166	9	-	-	-	-	27	GBU 4	Unidentified Bottle/Jar-Body		-	-	-	-	-	-	1	0.2	-		
44AX48	112	6	166	9	-	-	-	-	27	SAG 11	Broad Glass		320	-	-	-	2	-	11	2.11	-		

Site	Cat	Spec	Fld	Tr	STP	Unit	Str	Lev	Fea	Type	Translation	Cnt	Wght	Beg-End Date	V1	V3	V4	V5	V6	V7	V8	V9	Ptn	Note
44AX48	112	7	166	9	-	-	-	-	27	SAF 5	Machine Cut/Wrought Nail	4	-	-	-	624	-	414	2	-	-	-	2.12	-

APPENDIX B

ARCHAEOBOTANICAL RESULTS

Archaeobotany in the Garden: A Report on the Analysis of Flotation-recovered Plant Remains from the Lee-Fendall House Garden, Alexandria, Virginia.

Introduction

Archaeological investigations at the Lee-Fendall House Museum in Alexandria, Virginia were conducted in the spring and early summer of 2010 in advance of garden restoration efforts. Garden archaeology was undertaken in order to aid in the restoration of the rear garden to the period ca. 1850, when the property was purchased by Louis Cazenove. Cazenove was responsible for an extensive remodeling of the Lee-Fendall house in the Greek Revival style. While there is no documentary evidence of renovation of the gardens and yard concurrent with the house renovation, corresponding improvements to the grounds are expected to have been made.

Archaeobotanical studies were undertaken at the site to explore details of the garden landscape form and function, and to identify specific plant types used for ornament and food. Five flotation-processed samples associated with the Lee-Fendall House rear garden were selected for analysis (see Table 01).

Table 01: Summary of Analyzed Samples

Context	Context Description	No. of samples	Soil volume (liters)	Weight carbonized material (grams)
Feature 13	Brick walkway in front of kitchen	1	4	0.12
Feature 14	Possible planting bed in front of kitchen	1	6	0.13
Unit 17, Strat D	Buried A horizon at back of garden	1	6	0.43
Trench 2, Unit 16 Strat D	Buried A horizon at back of garden	1	5	0.12
Trench 7, Strat C	Fill, Ca. 1850	1	3	0.29
Total		5	24	1.085

Methods

The five soil samples were individually flotation processed using a Flote-Tech flotation system equipped with 0.325mm fine fraction and 1.0mm coarse fraction screens. The Flote-Tech system is a multi-modal flotation system which facilitates the separation and recovery of plant macro-remains from the soil matrix by agitation in water. Processing resulted in two (light and heavy)

fractions of material. Samples were air dried. Archaeobotanical consultant Justine McKnight performed all aspects of sample processing and analysis at her Severna Park, Maryland laboratory.

Each flotation sample was passed through graduated geological sieves to provide divisions for analysis. Weights and sample descriptions of the resulting greater-than or equal-to 2mm and less-than 2mm fractions were recorded. The greater-than or equal-to 2mm botanical specimens were examined under low magnification (10X to 40X) and sorted into general categories of material (i.e. wood, cultigen, seed, etc.). Descriptions were recorded for each category of the greater-than or equal-to 2mm material. The less-than 2mm size fractions were examined under low magnification, described, and scanned for the remains of seeds and cultivated plants.

In addition to plant materials, a variety of artifacts and ecofacts were present in the processed flotation fractions. Brick fragments, glass, coal, clinker, iron hardware, mica flecks, rock, plaster or mortar, and gravel. Modern floral materials contained in the samples included non-carbonized root fibers and non-carbonized seeds. These remains were noted and identified, but were not quantified or separated from sample matrices.

Identifications were attempted on all carbonized seed and cultigen remains encountered, and on a maximum of 20 randomly-selected fragments of wood from each sample containing more than 20 fragments in accordance with standard practice (Pearsall 2000). Identifications of all classes of botanical remains were made to the genus level when possible, and to the species level only when the assignment could be made with absolute certainty. All identifications were made under low magnification (10X to 40X) with the aid of standard texts (Panshin and deZeeuw 1980; Martin and Barkely 1961; Hoadley 1990), and checked against plant specimens from a modern reference collection representative of the flora of northern Virginia. Specimens were weighed using an electronic balance accurate to 0.01 grams.

Results of Analysis

Flotation processing of a total of 24 liters of cultural fill from 5 discrete soil samples yielded 1.085 grams of carbonized plant material (a mean average of 0.045 grams of carbon per liter of soil). The site flotation assemblage contained a diversity of plant material types, including wood charcoal, field crop remains, carbonized seed, along with non-carbonized (modern) seeds. An inventory of recovered plant macro-remains is provided in Table 02.

Wood charcoal was the most abundant class of plant material recovered from the Lee-Fendall House garden flotation samples. Wood charcoal was present in each of the analyzed samples. A total of 86 fragments of wood charcoal (measuring greater-than or equal to 2mm) weighed 1.07 grams. Of this total, 73 (a maximum of 20 fragments per sample) were randomly selected for identification. The garden wood charcoal assemblage was dominated by pine (*Pinus spp.*) (20 fragments or 27 percent of the identified sub-sample, by fragment count). White oak (*Quercus spp.*, *Leucobalanus group*) (11 percent), unspecified oak (*Quercus spp.*) (3 percent), American chestnut (*Castanea dentata*) (3 percent), maple (*Acer sp.*) (1 percent) and hickory (*Carya sp.*) (1 percent). Wood fragments not identifiable to the genus level were classed as coniferous, deciduous, and unidentifiable (collectively accounting for 53 percent of the wood subsample). Figure 01 illustrates the wood types identified from the Lee-Fendall Garden assemblage.

Table 02: Inventory of Flotation-Recovered Plant Remains from the Lee-Fendall Garden

Trench		6	6		2	7	TOTAL
Unit				17	16		5 samples
Strat				D	D	C	
Level				4	4	3	
Feature		13	14				
volume (liters)		4	6	6	5	3	24
sample weight (grams)		0.12	0.13	0.43	0.12	0.29	1.085
<hr/>							
WOOD CHARCOAL (no. of fragments)		11	13	33	10	19	86
total weight (grams)		0.12	0.13	0.41	0.12	0.29	1.07
<i>Acer sp. (maple)</i>		1					1
<i>Carya spp. (hickory)</i>		1					1
<i>Castanea dentata (American chestnut)</i>				2			2
<i>Pinus spp. (pine)</i>			7	2	1	10	20
<i>Quercus spp. (white oak)</i>				6	2		8
<i>Quercus spp. (oak)</i>		2					2
<i>coniferous</i>		3					3
<i>deciduous</i>				4	2		6
<i>unidentifiable</i>		4	6	6	5	9	30
total identified fragments		11	13	20	10	19	73
<hr/>							
CULTIGEN (carbonized) (no. of specimens)		0	0	1	0	0	1
total weight (grams)		0	0	0.01	0	0	0.01
<i>Triticum aestivum (bread wheat) kernel</i>				1			1
<hr/>							
SEED (carbonized) (no. of specimens)		0	0	1	0	0	1
total weight (grams)		0	0	0.01	0	0	0.005
unidentifiable fragment				1			1
							20%
SEEDS (non-carbonized) (presence)			x				20%
<i>Oxalis stricta (sheep sorrel)</i>			x				20%
<i>Mollugo verticillata (carpetweed)</i>			x				20%

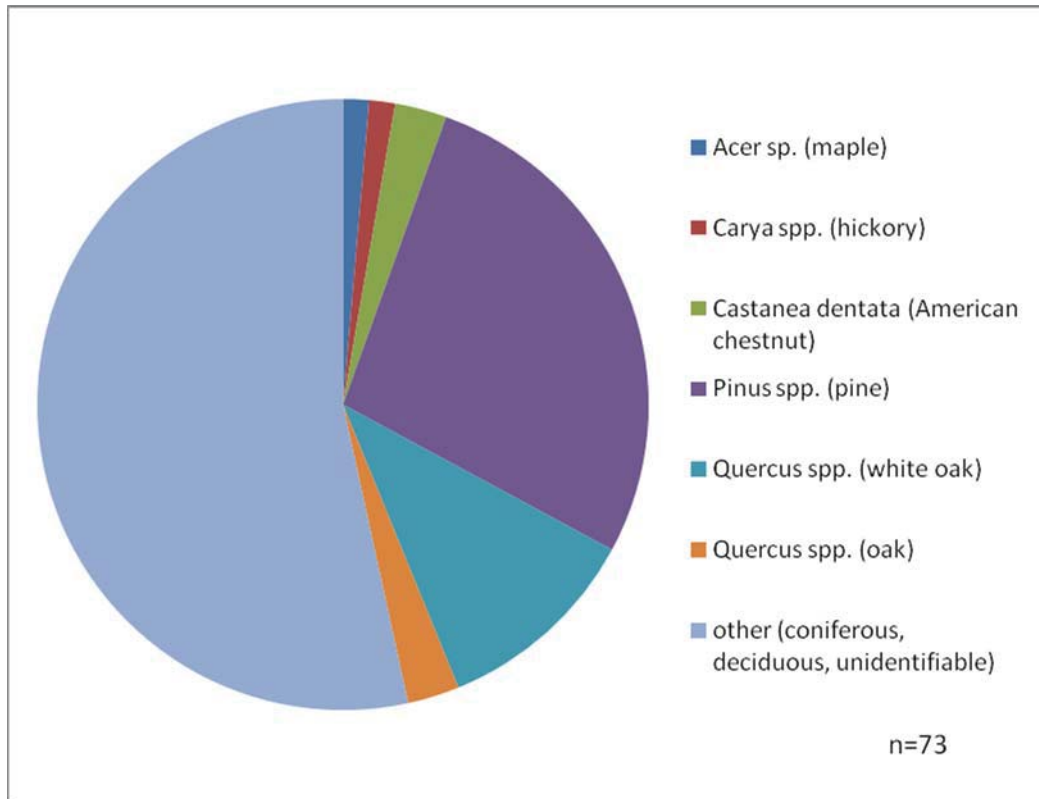


Figure 01: Percentage of Wood Types Recovered from the Lee-Fendall Garden Flotation Samples (N=73)

Cultivated plant remains were limited to a single bread wheat (*Triticum aestivum*) kernel recovered from Unit 17. See Figures 02 and 03.

The only evidence of carbonized seeds remains was a single unidentifiable fragment from Unit 17.

Non-carbonized seeds were present in one (20 percent) of the flotation samples analyzed. Two species of common, herbaceous garden weeds were identified (see Table 03). All represent weedy, opportunistic plants common to disturbed habitats. It is highly unlikely that the non-carbonized specimens were interred concurrent with historic artifacts and the carbonized macrobotanical remains. Although the persistence of non-carbonized plant remains from rare contexts such as consistently xeric or water-saturated environments does occur (Hastorf and Popper 1988; Minnis 1981; Pearsall 2000), such conditions do not characterize the Lee-Fendall House site. Non-carbonized plant remains occurring within archaeological soil samples from similar open-site environments are usually considered to be intrusive modern specimens (Minnis 1981; Keepax 1977). The recovery of non-carbonized plant remains may reveal specific contamination episodes associated with animal (i.e. rodent, insect, gastropod) burrowing, the action of root growth and decay, flooding or aeolian processes, or by the combined effects of these factors.

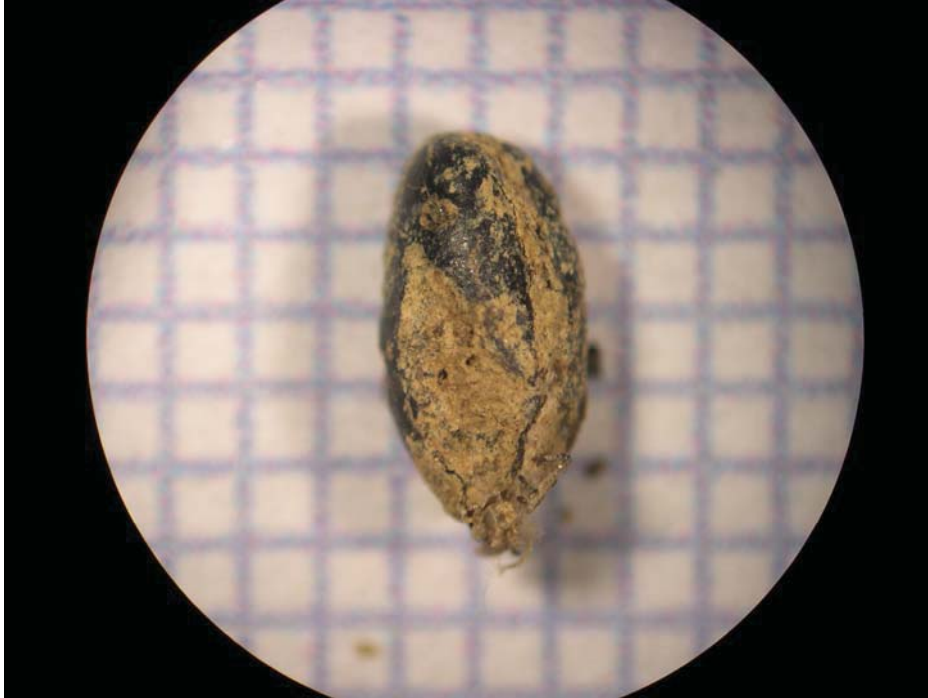


Figure 02: Bread Wheat Seed Recovered from Test Unit 17 (view 1).
Scale = 1mm grid

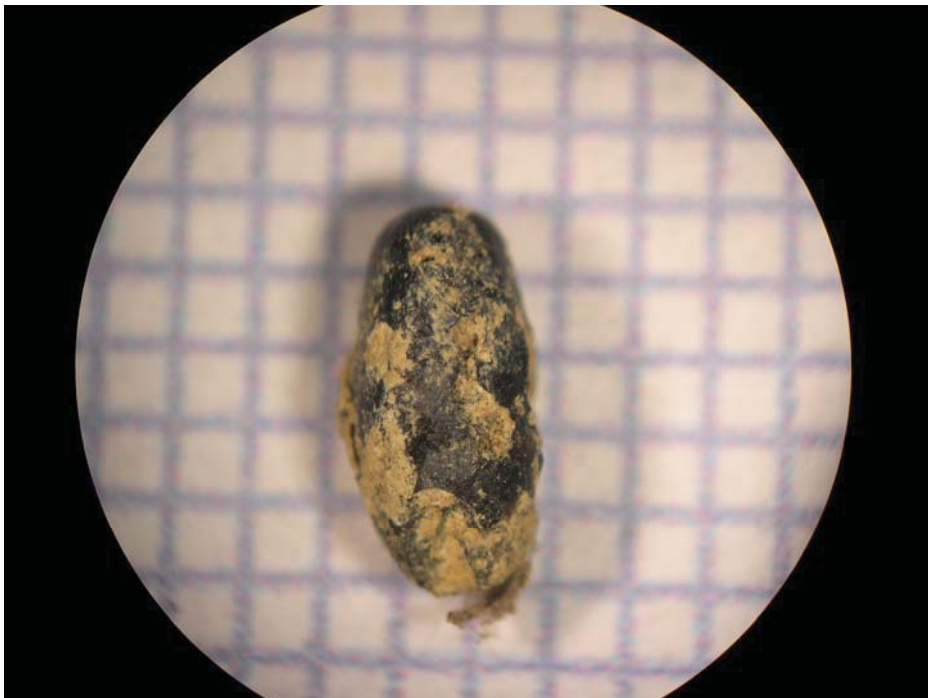


Figure 03: Bread Wheat Seed Recovered from Test Unit 17 (view 2).
Scale = 1mm grid

Table 03: Modern, Non-Carbonized Seeds Recovered from the Lee-Fendall Garden

UNCARBONIZED SEEDS	
(percentage presence within flotation samples [N=5])	
<i>Oxalis stricta</i> (sheep sorrel)	20%
<i>Mollugo verticillata</i> (carpetweed)	20%

Discussion

The archaeobotanical remains recovered from mid-nineteenth century historic contexts within the Lee-Fendall rear garden (44AX48) provide baseline information regarding site landscape conditions, food preferences and activity areas associated with the rear yard. Flotation of 24 liters of garden fill associated with possible planting beds, brick walkways, and buried A horizon located at the back of the garden reveal general patterns of wood charcoal distribution and food waste disposal.

A comparison of charcoal densities between the sampled contexts reveals patterns associated with the disposal of fuelwood ash, or the demolition of structures in the rear garden (Figure 03). Carbon densities were highest within the Trench 7 sample (ca. 1850 fill at the western edge of the garden), followed by the Unit 17 samples (one of the buried A horizon samples at the back of the garden). The lowest densities of recovered carbon are observed in the features associated with the kitchen (Features 13 and 14) - perhaps reflecting heavily used activity areas which were regularly cleaned due to their proximity to the house.

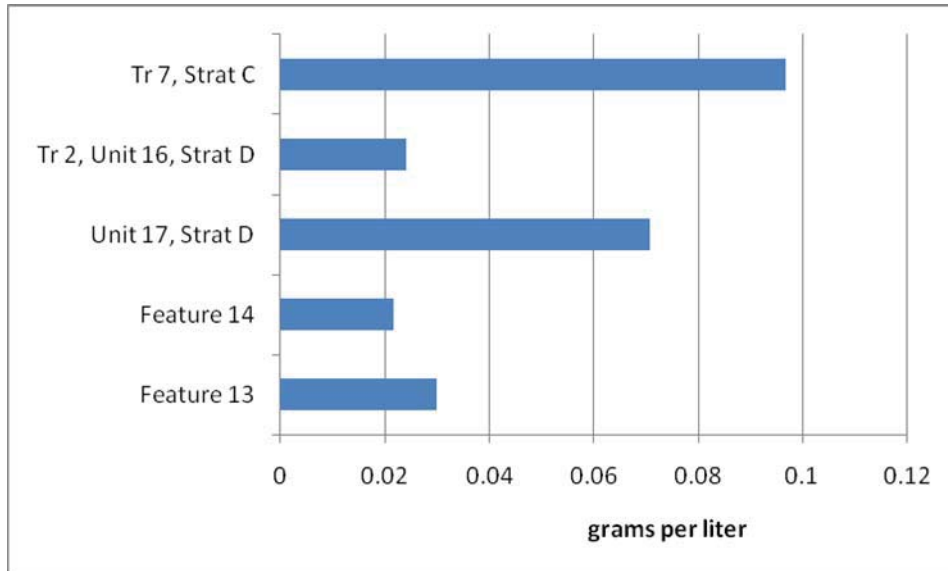


Figure 04: Density of Carbonized Plant Remains by Flotation Sample

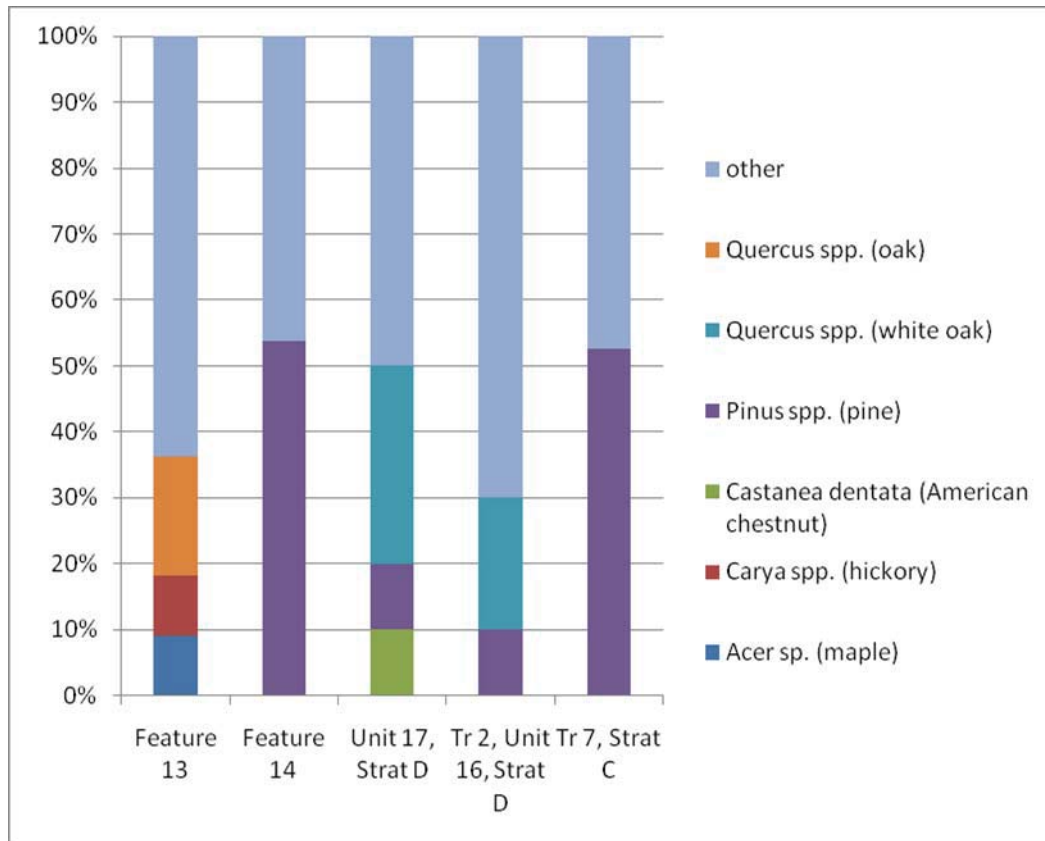


Figure 05: Comparison of Wood Types by Flotation Sample

Comparison of the wood types identified across the sampled garden context reveals general similarities between Feature 14 (a possible planting bed associated with the kitchen) and the Trench 7 (fill dating to 1850) sample, with pine species predominating. Feature 13 (brick walkway in front of the kitchen) contained a diversity of wood charcoal types, including hickory, oaks and maple. This association of these hardwood taxa suggests the deposition of fuel ash, as each of the wood types represented is a high-calorie fuel source (Graves 1919). Parallels in the wood charcoal assemblages from the two samples secured from the buried A horizon excavated at the back of the garden (Units 16 and 17) reveal the use of white oak as a structural material or perhaps as a fuel. American chestnut is represented in the Unit 17 sample, which also included the wheat kernel. Overall charcoal densities were notably high in the Unit 17 sample (Figure 04). This pattern of difference within Unit 17 suggests that this loci was unique among the sampled garden contexts.

Summary

Recent garden archaeology at the Lee-Fendall House emphasized the collection and study of archaeological remains. The analysis of plant macro-remains aids in our interpretation of the form and function of the rear garden ca. 1850, and provides information about domestic life in the Lee-Fendall household during the period of Louis Cazenove's tenure.

Flotation cultural sediment from distinct areas of interest within the rear yard produced a limited quantity and diversity of plant material types which document the choice of economically important plant species. The wood charcoal assemblage reveals a reliance on native forest taxa for fuel and possibly building construction. The use of cultivated grains is indicated by the presence of wheat kernels. Patterns in the types of wood charcoal represented and the intensity of their distribution aids in understanding the various activity areas associated with the rear garden of the Lee-Fendall House during the mid-nineteenth century.

One of the aims of the archaeobotanical study at the Lee-Fendall Garden was to provide specific information to guide the garden restoration effort. Unfortunately, the macro-botanical dataset produced during these investigations fails to provide information regarding the details of garden layout (i.e. specimen trees, planting beds or parterres), nor does it offer clues to the kinds of ornamental plants that were chosen and cultivated.

References Cited

Graves, H.S.

1919 *The Use of Wood for Fuel*. United States Department of Agriculture, Bulletin 753. Washington, D.C.

Hastorf, C.A., V.S. Popper (editors)

1988 *Current Paleoethnobotany*. University of Chicago Press, Chicago.

Hoadley, Bruce

1990 *Identifying Wood*. Taunton Press, Inc., Newtown, Connecticut.

Keepax, Carole

1977 Contamination of Archaeological Deposits by seeds of Modern Origin with Particular Reference to the Use of Flotation Machines. *Journal of Archaeological Science* 4:221-229.

Minnis, Paul E.

1981 Seeds in Archeological Sites: Sources and Some Interpretive Problems. *American Antiquity* 46:143-151.

Martin A. and W. Barkely

1961 *Seed Identification Manual*. University of California Press, Berkeley.

Panshin, Alexis and Carl deZeeuw

1980 *Textbook of Wood Technology*. Volume 1, 4th edition. McGraw Hill, New York.

Pearsall, D.

2000 *Paleoethnobotany: A Handbook of Procedures*. Second Edition. Academic Press, San Diego.